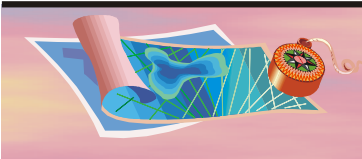


Vision 2020 Comprehensive Plan Seminole County, Florida

Functional Classifications - County Roadways

Roadway Segments	From	To	Existing FDOT Classification	Future County Classification
Airport Blvd.	Mellonville Ave.	C.R.425	Collector	Collector
	C.R. 425	U.S. 17-92	Minor Arterial	Arterial
	U.S. 17-92	C.R. 46-A	Minor Arterial	Arterial
	C.R. 46-A	S.R. 46	Minor Arterial	Arterial
Bear Lake Rd.	S.R. 436	McNeil Rd.	Collector	Collector
	McNeil Rd.	Bunnell Rd.	Collector	Collector
	Bunnell Rd.	Orange County	Collector	Collector
Bunnell Rd	Bear Lake Rd	Eden Park Rd	Collector	Collector
	Eden Park Rd.	Magnolia Ave	Collector	Collector
Central Pkwy	Montgomery Rd	Douglas Rd	Collector	Collector
	Douglas Rd	Palm Springs Dr	Collector	Collector
Chapman Rd	S.R. 426	S.R. 434	Unclassified	Collector
Chuluota Bypass	C.R. 419	Snowhill Rd.	Unclassified	Collector
Charlotte St	Seminole Ave	RR Tracks	Collector	Collector
	RR Tracks	C.R. 427	Collector	Collector
C.R. 15/Monroe	I-4	S.R. 46	Collector	Collector
C.R. 15/Upsala	S.R.46	West 90	Collector	Collector
	West 90	East 90	Collector	Collector
	East 90	C.R. 46-A	Collector	Collector
C.R. 15/Country Club	C.R. 46-A	Lake Mary Blvd	Collector	Collector
C.R. 15	Lake Mary Blvd	Broadmoor Dr	Collector	Collector
	Broadmoor Dr	C.R. 427	Collector	Collector
C.R. 46-A	U.S. 17-92	Old Lake Mary Rd	Minor Arterial	Arterial
	Old Lake Mary Rd	C.R. 15	Minor Arterial	Arterial
	C.R. 15	I-4	Minor Arterial	Arterial
	I-4	C.R. 431	Collector	Collector
C.R. 419	C.R. 427	Reed Rd	Minor Arterial	Arterial
	Reed Rd	Lockwood Rd	Minor Arterial	Arterial
	Lockwood Rd	2nd Street	Minor Arterial	Arterial
	2nd Street	Lake Mills Rd	Minor Arterial	Arterial
C.R. 415/Celery Ave	Lake Mills Rd	Orange County	Minor Arterial	Arterial (5)
	U.S. 17-92	Park Ave	Collector	Collector
	Park Ave	Sanford Ave	Collector	Collector
	Sanford Ave	Mellonville Ave	Collector	Collector
	Mellonville Ave.	Sipes Ave	Collector	Collector
C.R. 425/Sanford Ave	Sipes Ave	Beardall Ave	Collector	Collector
	Beardall Ave	S.R. 415	Collector	Collector
	Ist St	S.R. 46	Collector	Collector (3)
C.R. 425/Sanford Ave	S.R. 46	Airport Blvd	Minor Arterial	Arterial
	Airport Blvd.	Lake Mary Blvd Ext	Minor Arterial	Arterial
	C.R. 427	Lake Jessup Park	Collector	Collector (1)
	C.R. 419	Lockwood Rd	Collector	Collector
C.R. 426	Lockwood Rd	Old Mims Rd	Major Collector	Collector (5)
	Old Mims Rd	S.R. 46	Major Collector	Collector (5)
	S.R. 436	Charlotte St	Minor Arterial	Arterial
C.R. 427	Charlotte St	S.R. 434	Minor Arterial	Arterial
	S.R. 434	Longwood Hills Rd	Minor Arterial	Arterial
	Longwood Hills Rd	Longwood-Lake Mary	Minor Arterial	Arterial
	Longwood-Lake Mary	U.S. 17-92	Minor Arterial	Arterial
	U.S. 17-92	Hester	Minor Arterial	Arterial
	Hester	Lake Mary Blvd	Minor Arterial	Arterial

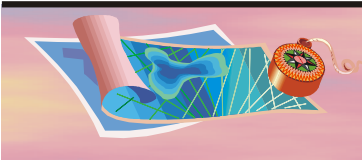




Vision 2020 Comprehensive Plan Seminole County, Florida

C.R. 431/Orange Blvd	C.R. 46-A Markham Rd S.R. 46 Oregon Ave	Markham Rd S.R. 46 Oregon Ave I-4	Collector Collector Collector Collector	Collector Collector Collector Collector
Dean Rd	S.R. 426	Orange County	Minor Arterial	Arterial
Dike Rd	Tuskawilla Rd Dodd Rd	Dodd Rd Howell Branch Rd	Unclassified Unclassified	Collector Collector
Dodd Rd	Red Bug Lake Rd	Howell Branch Rd	Collector	Collector
Dog Track Rd/Seminola Blvd	C.R. 427 U.S. 17-92	U.S. 17-92 Lake Dr	Minor Arterial Minor Arterial	Arterial Arterial
Douglas Rd	S.R. 434 North St Citrus St	North St Citrus St S.R. 436	Collector (2) Collector (2) Collector (2)	Collector Collector Collector (3)
Eastbrook Blvd	Howell Branch Rd	Orange County	Collector	Collector (1)
Eden Park	Bunnell Rd.	Orange County	Collector	Collector
E. E. Williamson Rd/ Longwood Hills Rd.	Markham Woods Rd Tollgate Tr Range Line Rd Lake Emma Rd	Tollgate Tr Range Lake Rd Lake Emma Rd C.R. 427	Collector Collector Collector Collector	Collector Collector Collector Collector
E. First St (Sanford)	U.S. 17-92	Mellonville Ave	Collector	Collector (3)
Gen Hutchison Pkwy	C.R. 4127	U.S. 17-92	Local	Collector
Greenway Blvd	Longwood-Lake Mary	Lake Emma Rd	Unclassified	Collector
Greenwood Blvd	Lake Mary Blvd Glenwood Dr	Glenwood Dr Lake Emma Rd	Unclassified Unclassified	Collector Collector
Howell Branch Rd	Orange Co Lake Howell Rd S.R. 436 Eastbrook Dr Dodd Rd	Lake Howell Rd S.R. 436 Eastbrook Dr Dodd Rd S.R. 426	Minor Arterial Minor Arterial Minor Arterial Minor Arterial Minor Arterial	Arterial (1) Arterial Arterial Arterial Arterial
Hunt Club Blvd	Wekiva Springs Rd E/W Wekiva Tr Sand Lake Rd	E/W Wekiva Tr Sand Lake Rd S.R. 436	Unclassified Unclassified Collector	Collector Collector Collector
International Parkway	Lake Mary Blvd C.R. 46-A	C.R. 46-A S.R. 46	Unclassified Collector	Collector (4) Collector
Lake Dr	Seminola Blvd	Tuskawilla Rd	Minor Arterial	Arterial
Lake Emma Rd	Lake Mary Blvd Greenwood Blvd Sand Pond Rd Greenway Blvd	Greenwood Blvd Sand Pond Rd Greenway Blvd Longwood Hills Rd	Collector Collector Collector Collector	Collector Collector Collector Collector
Lake Howell Rd	S.R. 436	Orange County	Minor Arterial	Arterial
Lake Mary Blvd	Markham Woods Rd I-4 Rinehart Rd C.R. 15 U.S. 17-92 C.R. 425/Sanford Ave Airport Entrance Rd	I-4 Rinehart Rd C.R. 15 U.S. 17-92 C.R. 425/Sanford Ave Airport Entrance Rd S.R. 46/S.R. 415	Collector Principal Arterial Principal Arterial Principal Arterial Principal Arterial Minor Arterial Minor Arterial	Collector Arterial Arterial Arterial Arterial Arterial Arterial
Lake Mills Rd/Fort Christmas Rd	C.R. 419	Orange County	Unclassified	Collector (5)
Lockwood Blvd	C.R. 426 C.R. 419 Mitchell Hammock	C.R. 419 Mitchell Hammock Carillon Blvd	Unclassified Collector Collector	Collector (3) Collector (3) Collector (3)
Longwood-Lake Mary	Lake Mary Blvd	C.R. 427	Collector	Collector
Longwood-Markham	S.R. 46	Markham Rd	Collector	Collector





Vision 2020 Comprehensive Plan Seminole County, Florida

Magnolia Ave	Bunnell Rd.	S.R. 434	Collector	Collector
Maitland Ave. (C.R. 427)	Orange County	S.R. 436	Minor Arterial	Arterial
Markham Rd	Longwood-Markham	Markham Woods Rd	Collector	Collector
	Markwood Woods Rd	Orange Blvd	Collector	Collector
Markham Woods Rd	Markham Rd	Lake Mary Blvd	Collector	Collector
	Lake Mary Blvd	E.E. Williamson Rd	Collector	Collector
	E.E. Williamson Rd	S.R. 434	Collector	Collector
McCulloch/Carillon	S.R. 434	Lockwood Rd	Collector	Collector
Mellonville Ave	S.R. 46	Seminole Blvd	Collector	Collector (3)
Montgomery Rd	S.R. 436	Central Parkway	Collector	Collector
	Central Parkway	S.R. 434	Collector	Collector
North St	Raymond St	Palm Springs Rd	Collector	Collector (1)
	Palm Springs Rd	Seminole Ave	Collector	Collector
Old Lake Mary Rd	Country Club Rd	Airport Blvd	Collector	Collector
	Airport Blvd.	C.R. 46-A	Collector	Collector
Oranole Rd	Wymore Rd	C.R. 427	Local	Collector
Oregon Rd	S.R. 46	Orange Blvd	Unclassified	Collector
Palm Springs Dr	S.R. 434	North St	Collector	Collector
	North St	Central Parkway	Collector	Collector
	Central Parkway	S.R. 436	Collector	Collector
Rangeline Rd	S.R. 434	E.E. Williamson Rd	Collector	Collector (3)
Raymond Ave	S.R. 434	North St	Local	Collector (1)
Red Bug Lake Rd	S.R. 436	Eagle Cir	Minor Arterial	Arterial
	Eagle Cir	Tuskawilla Rd	Minor Arterial	Arterial
	Tuskawilla Rd	S.R. 426	Minor Arterial	Arterial
Rinehart Rd	S.R. 46	Expressway	Collector	Collector
	Expressway	C.R. 46-A	Collector	Collector
	C.R. 46-A	Anderson	Collector	Collector (3)
	Anderson	Lake Mary Blvd	Collector	Collector (3)
Sand Lake Rd	Hunt Club Blvd	S.R. 434	Collector	Collector
Seminole Blvd	U.S. 17-92	Mellonville Ave	Local	Collector (3)
Snow Hill	Chuluota Bypass	C.R. 426	Minor Collector	Collector (5)
Tuskawilla Rd	S.R. 426	Dike Rd	Minor Arterial	Arterial
	Dike Rd	Red Bug Lake Rd	Minor Arterial	Arterial
	Red Bug Lake Rd	East Lake Dr	Minor Arterial	Arterial
	East Lake Dr	Winter Springs Blvd	Minor Arterial	Arterial
	Winter Springs Blvd	S.R. 434	Minor Arterial	Arterial
Wekiva Springs Rd	Orange County	Hunt Club Blvd	Minor Arterial	Arterial
	Hunt Club Blvd	Fox Valley Rd	Minor Arterial	Arterial
	Fox Valley Rd	East Lake Brantley Dr	Minor Arterial	Arterial
	East Lake Brantley Dr	S.R. 434	Minor Arterial	Arterial
Winter Park Dr	S.R. 436	S.R. 434	Collector	Collector (3)
Wymore Rd	Orange County	S.R. 436	Collector	Collector

(1) Not included in Concurrency/Road Impact Fee Network

(2) Reclassified from Arterial

(3) City Maintained

(4) Private Road

(5) Rural Road

Source: Planning Division, Seminole County

