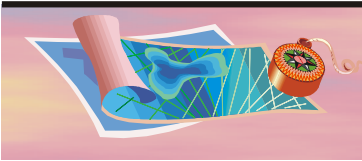


# Vision 2020 Comprehensive Plan Seminole County, Florida

## Functional Classifications - State Roadways

Roadway Segments	From	To	Existing FDOT Classification	Future County Classification
<b>I-4</b>	Orange County	S.R. 436	Principal Arterial	Arterial
	S.R. 436	S.R. 434	Principal Arterial	Arterial
	S.R. 434	Lake Mary Blvd	Principal Arterial	Arterial
	Lake Mary Blvd	C.R. 46-A	Principal Arterial	Arterial
	C.R. 46-A	S.R. 46	Principal Arterial	Arterial
	S.R. 46	C.R. 15/U.S. 17-92	Principal Arterial	Arterial
<b>U.S. 17-92</b>	C.R. 15/U.S. 17-92	Volusia County	Principal Arterial	Arterial
	Orange County	S.R. 436	Principal Arterial	Arterial
	S.R. 436	Dogtrack Rd/Seminola Blvd.	Principal Arterial	Arterial
	Dogtrack Rd/Seminola Blvd.	S.R. 434	Principal Arterial	Arterial
	S.R. 434	SR 419/CR 427	Principal Arterial	Arterial
	SR 419/CR 427	C.R. 427	Principal Arterial	Arterial
	C.R. 427	County Home Rd	Principal Arterial	Arterial
	County Home Rd	Lake Mary Blvd	Principal Arterial	Arterial
	Lake Mary Blvd	Airport Blvd	Principal Arterial	Arterial
	Airport Blvd.	25th St	Principal Arterial	Arterial
<b>U.S. 441</b>	25th St	S.R. 46	Principal Arterial	Arterial
	S.R. 46	I-4	Principal Arterial	Arterial
<b>S.R. 46</b>	I-4	Volusia County	Principal Arterial	Arterial
	Orange County	Orange County	Principal Arterial	Arterial (1)
	Lake County	Orange Blvd	Principal Arterial	Arterial
	Orange Blvd	Lake Forest Ent	Principal Arterial	Arterial
	Lake Forest Ent	I-4	Principal Arterial	Arterial
	I-4	C.R. 15/Upsala	Principal Arterial	Arterial
	C.R. 15/Upsala	Airport Blvd	Principal Arterial	Arterial
	Airport Blvd.	U.S. 17-92	Principal Arterial	Arterial
	U.S. 17-92	Sanford Ave	Minor Arterial	Arterial
	Sanford Ave	Beardall Ave	Minor Arterial	Arterial
	Beardall Ave	S.R. 415	Principal Arterial	Arterial
	S.R. 415	Bridge	Principal Arterial	Arterial
	Bridge	Osceola Rd	Principal Arterial	Arterial (2)
	Osceola Rd	C.R. 426	Principal Arterial	Arterial (2)
	C.R. 426	Volusia County	Principal Arterial	Arterial (2)
<b>S.R. 414</b>	Orange County	Orange County	Principal Arterial	Unlisted (1)
<b>S.R. 415</b>	Volusia County	C.R. 415	Minor Arterial	Arterial
	C.R. 415	S.R. 46	Minor Arterial	Arterial
<b>S.R. 417 (Central Florida Greenway)</b>	Orange County	S.R. 426	Principal Arterial	Arterial
	S.R. 426	Red Bug Lake Rd	Principal Arterial	Arterial
	Red Bug Lake Rd	S.R. 434	Principal Arterial	Arterial
	S.R. 434	C.R. 427	Principal Arterial	Arterial
	C.R. 427	U.S. 17-92	Principal Arterial	Arterial
	U.S. 17-92	C.R. 46-A	Principal Arterial	Arterial
	C.R. 46-A	Rinehart Rd	Principal Arterial	Arterial
Rinehart Rd	I-4	Principal Arterial	Arterial	
<b>S.R. 419</b>	S.R. 434	U.S. 17-92	Minor Arterial	Arterial





# Vision 2020 Comprehensive Plan Seminole County, Florida

	Tuskawilla Rd	Expressway Ramp	Minor Arterial	Arterial
	Expressway Ramp	Dean Rd	Minor Arterial	Arterial
	Dean Rd	Chapman Rd	Minor Arterial	Arterial
	Chapman Rd	Red Bug Lake Rd	Minor Arterial	Arterial
	Red Bug Lake Rd	Winter Springs Blvd	Minor Arterial	Arterial
	Winter Springs Blvd	Lake Jessup Rd	Minor Arterial	Arterial
	Lake Jessup Rd	S.R. 434	Minor Arterial	Arterial
<b>S.R.434</b>	Orange County	S.R. 436	Principal Arterial	Arterial
	S.R. 436	Sand Lake Road	Principal Arterial	Arterial
	Sand Lake Road	Wekiva Spgs/Montgomery	Principal Arterial	Arterial
	Wekiva Spgs/Montgomery	Douglas Ave	Principal Arterial	Arterial
	Douglas Ave	I-4 East Ramp	Principal Arterial	Arterial
	I-4 East Ramp	Palm Springs Dr	Principal Arterial	Arterial
	Palm Springs Dr	C.R. 427	Principal Arterial	Arterial
	C.R. 427	U.S. 17-92	Principal Arterial	Arterial
	U.S. 17-92	S.R. 419	Principal Arterial	Arterial
	S.R. 419	Tuskawilla Rd	Principal Arterial	Arterial
	Tuskawilla Rd	SR426/CR419	Principal Arterial	Arterial
	SR426/CR419	Mitchell Hammock	Principal Arterial	Arterial
	Mitchell Hammock	Chapman Rd	Principal Arterial	Arterial
	Chapman Rd	Orange County	Principal Arterial	Arterial
<b>S.R. 436</b>	Orange County	Hunt Club Blvd	Principal Arterial	Arterial
	Hunt Club Blvd	Bear Lake Rd	Principal Arterial	Arterial
	Bear Lake Rd	S.R. 434	Principal Arterial	Arterial
	S.R. 434	Lynchfield Ave	Principal Arterial	Arterial
	Lynchfield Ave	Wymore/Douglas Rd	Principal Arterial	Arterial
	Wymore/Douglas Rd	I-4 East Ramp	Principal Arterial	Arterial
	I-4 East Ramp	Northlake Blvd	Principal Arterial	Arterial
	Northlake Blvd	Palm Springs Blvd	Principal Arterial	Arterial
	Pam Springs Blvd	Maitland Ave	Principal Arterial	Arterial
	Maitland Ave	U.S. 17-92	Principal Arterial	Arterial
	U.S. 17-92	Red Bug Lake Rd	Principal Arterial	Arterial
	Red Bug Lake Rd	Howell Branch Rd	Principal Arterial	Arterial
	Howell Branch Rd	Orange County	Principal Arterial	Arterial

(1) Not included in Concurrency/Road Impact Fee Network

(2) Rural Road

Source: Planning Division, Seminole County

