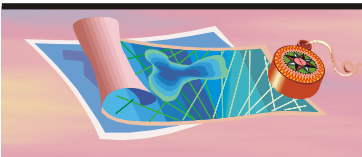


# Vision 2020 Comprehensive Plan Seminole County, Florida

## Existing Coordination Mechanisms With Regional Agencies

| AGENCY   | SUBJECT AREA   | COORDINATION MECHANISM   | RESPONSIBLE COUNTY DEPARTMENT                               | EFFECTIVENESS     |
|--|--|--|---|-------------------|
| East Central Florida Regional Planning Council   | Developments of Regional Impact, Census Data   | Two Seminole County Commissioners are represented on the Council; information sharing  | Board of County Commissioners, Planning and Development     | Satisfactory      |
|  | Housing  | Data provision and information sharing   | Planning and Development                                    | Satisfactory      |
|  | Emergency Management   | Two Seminole County representatives on RPC Local Emergency Planning Committee  | Public Safety   | Satisfactory      |
|  | Miscellaneous regional planning Issues   | Seminole County staff is represented on the ECFRPC Planners Committee (inactive)   | Planning and Development                                    | Satisfactory      |
| METROPLAN ORLANDO (Metropolitan Planning Organization for Orange, Osceola, Seminole Counties also involves coordination with Brevard, Volusia and Lake Counties) | Transportation Planning, Growth Projections  | Two County Commissioners and two city representatives from Seminole County   | Board of County Commissioners and selected cities           | Satisfactory      |
|  | Transportation Planning, Growth Projections  | Four County staff members are represented on the OUATS Transportation Technical Committee  | Planning and Development; Expressway Authority; Engineering | Satisfactory      |
| East Central Florida CFASAPP   | Aviation Planning  | Staff member as representative   | Planning and Development                                    | Satisfactory      |
| Economic Development Council of Mid-Florida  | Economic Development   | Board of County Commissioners provides funding; Information Sharing  | Board of County Commissioners, Economic Development         | Satisfactory      |
| Volusia County Metropolitan Planning Organization  | Transportation Planning  | Information sharing, coordinated efforts to acquire funding for regional transportation improvements   | Planning and Development                                    | Satisfactory      |
| Central Florida Regional Transportation Authority (LYNX)   | Mass Transit Service Delivery and planning; bus and paratransit services and rail planning, funding transit services | One Seminole County Commissioner represented on the Board of Directors; staffs share data; Board of County Commissioners funds Seminole County bus routes and paratransit services | Board of County Commissioners, Planning and Development     | Needs Improvement |





# Vision 2020 Comprehensive Plan Seminole County, Florida

| AGENCY   | SUBJECT AREA  | COORDINATION MECHANISM  | RESPONSIBLE COUNTY DEPARTMENT                           | EFFECTIVENESS |
|--|---|---|---|---------------|
| Orange County Soil and Water Conservation District                               | Conservation  | Information sharing   | Environmental Services                                  | Satisfactory  |
| St. Johns River Water Management District and others                             | Conservation, Water Quality   | One County Commissioner is represented on the Econlockhatchee River Task Force and Wekiva River Task Force; County staff sits on technical committees | Board of County Commissioners; Planning and Development | Satisfactory  |
| St. Johns River Water Management District  | Conservation  | Wekiva Protection Act provides for permanent review, coordination and planning  | Planning and Development                                | Satisfactory  |
| St. Johns River Water Management District, Soil Conservation Service, FEMA, USGS | Stormwater  | Coordinated drainage studies with provisions for local match; St. Johns River Middle Basin Working Group  | Planning and Development, Public Works                  | Satisfactory  |
| Wekiva River Basin Working Group   | Conservation  | Deputy County Manager serves on Council to develop programs for management of Wekiva River  | Planning and Development                                | Satisfactory  |
| Econ River Basin Working Group   | Management and protection of the Big and Little Econ River            | Information sharing, grant proposal   | Planning and Development, Public Works                  | Satisfactory  |
| Friends of Lake Jesup Task Force   | Conservation  | One County Commissioners serves on task force and staff coordination  | Planning and Development                                | Satisfactory  |
| Florida Economic Development Council   | Economic Development  | Information sharing, membership   | Economic Development                                    | Satisfactory  |
| Seminole County Community College  | Job training  | Coordination of job training through grant funded program   | Planning and Development                                | Satisfactory  |
| South Seminole/North Orange Wastewater Transmission Authority                    | Wastewater transmission facilities served by the Iron Bridge Facility | Authority comprised of a member from each jurisdiction  | Public Works  | Satisfactory  |





# Vision 2020 Comprehensive Plan Seminole County, Florida

| AGENCY  | SUBJECT AREA                                      | COORDINATION MECHANISM  | RESPONSIBLE COUNTY DEPARTMENT | EFFECTIVENESS |
|---|---|---|-------------------------------|---------------|
| Senior Resource Alliance (Area Agency on Aging) | Senior services; distribution of grants; advocacy | Three Seminole County representatives Board and ad-hoc/at large members | Board of County Commissioners | Satisfactory  |