

Vision 2020 Comprehensive Plan Seminole County, Florida

Facility Program – Drainage

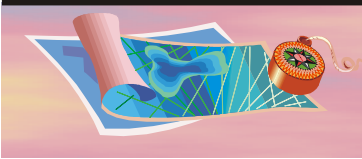
Summary of Policies, Programs and Capital Improvements with Cost Impacts Drainage

Scheduled Program and Cost Impacts for 10/1/2003 - 9/30/2008	
FY 2003/04 and 2004/05	
Elder Creek Improvements	
Yankee Lake Basin Evaluation	
FY 2005/06 – 2007/08	
Big Econ Basin Evaluation	
NPDES	
Middle Basin Initiative – Joint Projects Funding	
Conveyance System	
Deficiency Correction Projects	
Neighborhood Improvements	
Total 5 Year Cost	\$18,072,821

Potential Additional Cost Impacts During/Beyond Five Year Planning Period
<ul style="list-style-type: none"> · Implementation of water quality programs, deficiency correction, and monitoring based on current NPDES permit. · Initiation of remaining 4 Basin Studies (St.Johns, Sanford, L. Harney, Puzzle Lake basins). · Future needed right-of-way acquisitions. · Further operating and management programs/costs. · Funding of the Total Maximum Daily Load (TMDL) program for Seminole County beginning FY2005/06 for NPDES Permit compliance.

Available Funding Options - Major revenue sources available to the Board of County Commissioners (either existing or available without voter approval) to fund all or portions of the Drainage Capital Improvement Element Update for Fiscal Years 2005/06 through 2007/08 are: General fund, Transportation Trust fund, Local Option Infrastructure Sales Tax fund (if major road system related), Stormwater assessment. The revenue capacities associated with each of the above major revenues provide sufficient funding to enable full implementation of the five year schedule of improvements identified as part of the CIE Update.





Vision 2020 Comprehensive Plan Seminole County, Florida

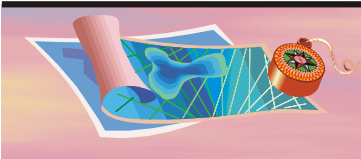
Capacity/Improvements Summary

Stormwater Program

The following information is presented as an overview of the Stormwater Program which provides for continuing basin evaluations, capital improvements, initiation of water quality studies, and compliance with State and Federal regulations.

The Capital Improvements Element schedule of specific basin evaluations, studies, improvement projects, and equipment needs that are listed on the following pages represent the five year capital projects program. One of the primary goals of this program is to reduce system drainage deficiencies over time as allowed by funding. Level of service standards for Stormwater have been adopted for various types of road and development facilities which insure that no further deficiencies are created with new development. These standards can be found in *Exhibit CIE: Facility LOS - Drainage*.





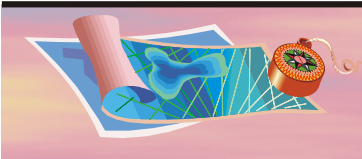
Vision 2020 Comprehensive Plan Seminole County, Florida

Five Year Capital Schedule of Improvements

Element: DRAINAGE

<u>Project Title and PID Number</u>	<u>2003/04</u>	<u>2004/05</u>	<u>2005/06</u>	<u>2006/07</u>	<u>2007/08</u>
STWTR BIG WEKIVA BASIN INVENTORY AND EVA Proj	\$27,925	\$0	\$0	\$0	\$0
0083 01 - DC67141X CIE Oper	\$0	\$0	\$0	\$0	\$0
STWTR SWEETWATER COVE TRIBUTARY/BIG WEI Proj	\$369,497	\$0	\$0	\$0	\$0
0083 02 - DC69146X CIE Oper	\$0	\$0	\$0	\$0	\$0
STWTR LAKE JESUP BASIN INVENTORY AND EVA Proj	\$79,431	\$0	\$0	\$0	\$0
0090 01 - DC67011X CIE Oper	\$0	\$0	\$0	\$0	\$0
STWTR LITTLE ECON BASIN INVENTORY AND EV Proj	\$54,525	\$0	\$0	\$0	\$0
0092 01 - DC67021X CIE Oper	\$0	\$0	\$0	\$0	\$0
STWTR LITTLE ECONLOCKHATCHEE RIVER BASIN Proj	\$1,187,211	\$0	\$0	\$0	\$0
0092 02 - DC69151X CIE Oper	\$0	\$0	\$0	\$0	\$0
STWTR MIDWAY BASIN DEFICIENCY CORRECTION Proj	\$67,057	\$0	\$0	\$0	\$0
0115 01 - DC67031X CIE Oper	\$0	\$0	\$0	\$0	\$0
STWTR UPDATE MONROE BASIN INVENTORY ANC Proj	\$18,766	\$0	\$0	\$0	\$0
0116 01 - DC67041X CIE Oper	\$0	\$0	\$0	\$0	\$0
STWTR-WEST CRYSTAL DRIVE PHASE 1-MONROE Proj	\$0	\$0	\$575,000	\$0	\$0
0116 09 - CIE Oper	\$0	\$0	\$0	\$0	\$0
STWTR:I-4 BORROW PIT Proj	\$132,381	\$0	\$0	\$0	\$0
0116 10 - PC67045X CIE Oper	\$0	\$0	\$0	\$0	\$0
STWTR LITTLE WEKIVA BASIN EVALUATION Proj	\$155,958	\$0	\$0	\$0	\$0
0117 01 - DC67051X CIE Oper	\$0	\$0	\$0	\$0	\$0
STWTR NORTHWESTRN AVE/LWEKIVA/LOCAL Proj	\$38,000	\$0	\$0	\$0	\$0
0117 05 - PC67053X CIE Oper	\$0	\$0	\$0	\$0	\$0
STWTR HORSELOVERS LNLWEKIVA/LOCAL Proj	\$45,000	\$0	\$0	\$0	\$0
0117 06 - PC67054X CIE Oper	\$0	\$0	\$0	\$0	\$0
STWTR MAJOR/MINOR CONVEYANCE-COUNTYWII Proj	\$0	\$0	\$100,000	\$100,000	\$150,000
0130 01 - DC69011X CIE Oper	\$0	\$0	\$0	\$0	\$0
STWTR WATER QUALITY NPDES PROFESSIONAL Proj	\$0	\$0	\$525,000	\$520,000	\$700,000
0243 01 - DC69031X CIE Oper	\$0	\$0	\$0	\$0	\$0
STWTR DEFICIENCY CORRECTION PROGETS/CC Proj	\$0	\$0	\$1,400,000	\$1,950,000	\$0
0945 01 - PC68041X CIE Oper	\$0	\$0	\$0	\$0	\$0
STWTR-NEIGHBORHOOD DRAINAGE PROJECTS - Proj	\$0	\$0	\$200,000	\$300,000	\$0
1563 01 - DC69167X CIE Oper	\$0	\$0	\$0	\$0	\$0
STWTR-NEIGHBORHOOD DRAINAGE IMPR. OTHEF Proj	\$0	\$0	\$300,000	\$300,000	\$350,000
1563 02 - PC69166X CIE Oper	\$0	\$0	\$0	\$0	\$0
STWTR-CONVEYANCE PROGRAM CAPITAL PROJE Proj	\$0	\$0	\$780,000	\$710,000	\$850,000
1613 01 - DC60212X CIE Oper	\$0	\$0	\$0	\$0	\$0
STWTR-BIG ECON BASIN EVALUATION Proj	\$0	\$0	\$200,000	\$140,000	\$180,000
1682 01 - CIE Oper	\$0	\$0	\$0	\$0	\$0
STWTR-PENELOPE DRIVE-SOLDIERS CREEK Proj	\$0	\$0	\$150,000	\$0	\$0
1683 01 - CIE Oper	\$0	\$0	\$0	\$0	\$0
STWTR-ST JOHNS RIVER MIDDLE BASIN INITIA Proj	\$0	\$0	\$200,000	\$250,000	\$30,000
1684 01 - CIE Oper	\$0	\$0	\$0	\$0	\$0





Vision 2020 Comprehensive Plan Seminole County, Florida

<u>Project Title and PID Number</u>		<u>2003/04</u>	<u>2004/05</u>	<u>2005/06</u>	<u>2006/07</u>	<u>2007/08</u>
STWTR NORTHWESTERN AVENUE	Proj	\$557,250	\$0	\$0	\$0	\$0
1745 01 - DC60214X CIE	Oper	\$0	\$0	\$0	\$0	\$0
STWTR- ELDER CREEK/YANKEE LAKE BASIN EVA	Proj	\$4,129,820	\$0	\$0	\$0	\$0
2030 02 - DC69161X CIE	Oper	\$0	\$0	\$0	\$0	\$0
STWTR YANKEE LAKE BASIN EVALUATION	Proj	\$100,000	\$150,000	\$0	\$0	\$0
2283 01 - PC69208X CIE	Oper	\$0	\$0	\$0	\$0	\$0
Element: DRAINAGE	Proj	\$6,962,821	\$150,000	\$4,430,000	\$4,270,000	\$2,260,000
	Oper	\$0	\$0	\$0	\$0	\$0

