

# Vision 2020 Comprehensive Plan Seminole County, Florida

## Facility Program - Transportation: Roads

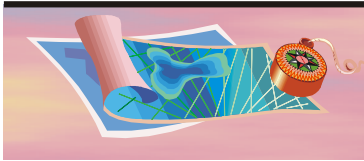
### Summary of Policies, Programs and Capital Improvements with Cost Impacts Transportation - Roads

Scheduled Program and Cost Impacts for 10/1/2003 - 9/30/08	
Costs include funding for: State Road Network Improvements County Road Network Improvements - Joint projects with the Cities Traffic Management Improvements Sidewalk Programs	
<b>Total 5 Year Cost</b>	<b>\$341,338,035</b>

Potential Additional Cost Impacts During/Beyond Five Year Planning Period
The September, 2001 referendum renewal of the local option sales tax has enabled programming of specific projects to provide a wide variety of transportation improvements, including previously identified needs on the State Road system. Evolving needs not yet addressed, however, include major road network improvements in the vicinity of key economic drivers in Seminole County. An example of such a need relating to the Orlando-Sanford Airport is the widening of SR 46 from Sanford Avenue west to SR 415.

**Available Funding Options** - 1 Cent Sales Tax and Impact Fees are projected to cover costs for the majority of the planned major improvements, with the County Transportation Fund supporting the school and small safety sidewalk programs. Major revenue sources available to the Board of County Commissioners (either existing or available without voter approval) to fund all or portions of the Traffic Circulation Capital Improvement Element Update are: General fund, Transportation Trust fund, Local Option Infrastructure Sales Tax fund, Arterial Impact Fee fund, North Collector Impact Fee fund, West Collector Impact Fee fund, East Collector Impact Fee fund, South Central Impact Fee fund, CDBG Fund. The revenue capacities associated with each of the above major revenues provide sufficient funding to enable full implementation of the five year schedule of improvements identified as part of the CIE Update.





# Vision 2020 Comprehensive Plan Seminole County, Florida

## Capacity Evaluation Summary: County Roads

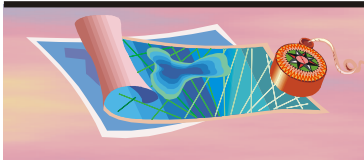
County Roads	From-To	Note	Adopted LOS Standard	2002 Existing Deficiency	Projected Deficiency if no Improvement	Projected Deficiency with Improvement
Airport Boulevard	SR 46 to Mc Cracken Road	1	E			
Airport Boulevard	Mc Cracken Road to CR 46A	1	E			
Airport Boulevard	CR 46A to Old Lake Mary Road	1	E			
Airport Boulevard	Old Lake Mary Road to US 17-92	1	E			
Bunnell Road	Bear Lake Road to Eden Park Road	1	E			
Bunnell Road	Eden Park Road to Pearl Lake Causeway	1	E			
Bunnell Road	Pearl Lake Causeway to West Town Parkway	1	E			
Chapman Road	SR 426 to Oak Circle	2	E		Yes	
Chapman Road	Oak Circle to SR 434	2	E		Yes	
CR 15/Monroe Road	SR 46 to 17-92	1	D			
CR 419	Lockwood Boulevard to Chuluota Bypass	1	E		Yes	
CR 427	Sanford Avenue to Sunland Drive	1	E			
CR 427	Sunland Drive to County Home Road	1/3	E			
CR 427	County Home Road to US 17-92	1/3	E			
CR 427	North Street to SR 436	1	E			
CR 46A	Rinehart Road to Country Club Road	1/3	E		Yes	
CR 46A	Country Club Road to Airport Boulevard	1	E		Yes	
CR 46A	Airport Boulevard to Old Lake Mary Road	1	E		Yes	
Dean Road	SR 426 to County Line	1	E	Yes	Yes	
Dodd Road	Red Bug Lake Road to Dike Road	1	E			
Dodd Road	Dike Road to Howell Branch Road	1	E			
Douglas Avenue	Citrus Street to SR 436		E		Yes	
Eden Park Road	Bunnell Road to Country Creek (N Entrance)	1	E			
Eden Park Road	Country Creek to County Line	1	E			
Longwood Hills Road	Rangeline Road to Lake Emma Road		E		Yes	
Lake Drive	Seminola Boulevard to Park Drive	1	E			
Lake Drive	Park Drive to Sterling Oak Drive	1	E			
Lake Drive	Sterling Oak Drive to Azalea Road	1	E			
Lake Drive	Azalea Road to Tuskawilla Road	1	E			
Lake Emma Road	Sand Pond Road to Greenway Boulevard	1	E		Yes	
Lake Emma Road	Greenway Boulevard to Longwood Hills Road	1/2	E		Yes	
Lake Mary Boulevard	US 17-92 to CR 427	1	E			
Lake Mary Boulevard	CR 427 to Airport Entrance	1	E			
Lake Mary Boulevard	Airport Entrance to SR 46/SR 415	4	E			
Sand Lake Road	SR 434 to W. Lake Brantley Road (E)	1	E			
Sand Lake Road	W. Lake Brantley (E) to Hunt Club Boulevard	1	E			
Sand Lake Road	Hunt Club Boulevard to Orange County Line	1	E			
Wymore Road	SR 436 to Westmonte Drive	1	E			
Wymore Road	Westmonte Drive to Spring Lake Hills Drive	1	E		Yes	
Wymore Road	Spring Lake Hills Drive to Lake Destiny Road	1	E		Yes	
Wymore Road	Lake Destiny Road to Orange County Line	1	E		Yes	

(1) Additional lanes or other improvements programmed, as listed in the Orlando Urban Area Transportation Improvement Program (FY 2002/03-2006/07) and by Seminole County Public Works Department.

(2) Policy Constrained. (3) Construction occurring in 2002. (4) New Roadway Construction.

Note: This summary presents only those existing, classified County roadways that have: 1) a current deficiency, 2) a five-year deficiency, or 3) improvement activity in the CIE.





# Vision 2020 Comprehensive Plan Seminole County, Florida

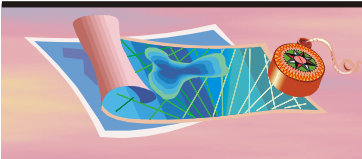
## Capacity Evaluation Summary: State Roads

State Roads	From-to	Note	Adopted LOS Standard	2002 Existing Deficiency	Projected Deficiency if no Improvement	Projected Deficiency with Improvement
Interstate 4	Orange County Line to SR 436		D	Yes	Yes	
Interstate 4	SR 436 to SR 434		D		Yes	
Interstate 4	SR 434 to Lake Mary Boulevard		D	Yes	Yes	
Interstate 4	Lake Mary Boulevard to SR 46	1	D	Yes	Yes	Yes
Interstate 4	SR 46 to Volusia County Line	1	D	Yes	Yes	
SR 415	Volusia County Line to Celery Avenue		E	Yes	Yes	
SR 417	Orange County Line to I-4		D			
SR 419	Edgemon Avenue to US 17-92		E		Yes	
SR 426	Tuskawilla Road to E-W Expressway		E		Yes	
SR 426	E-W Expressway to Dean Road	1	E		Yes	
SR 426	Dean Road to Chapman Road	1	E		Yes	
SR 426	Chapman Road to Red Bug Lake Road	1	E		Yes	
SR 426	Winter Springs Boulevard to Lake Jesup Ave		E		Yes	
SR 426	Lake Jesup Avenue to SR 434		E		Yes	
SR 434	Orange County Line to Chapman Road	1	D		Yes	Yes
SR 434	Chapman Road to Alafaya Woods Boulevard	1	D		Yes	
SR 434	Alafaya Woods to Mitchell Hammock Road	1	D		Yes	Yes
SR 434	Mitchell Hammock Road to SR 426-CR 419		D		Yes	
SR 434	SR 426-CR 419 to DeLeon Street		D		Yes	
SR 434	DeLeon Street to E-W Expressway		D		Yes	
SR 434	CR 427 to Rangeline Road		D		Yes	
SR 434	Rangeline Road to Palm Springs Drive		D		Yes	
SR 434	Palm Springs Drive to Raymond Avenue		D	Yes	Yes	
SR 434	Raymond Avenue to I-4		D	Yes	Yes	
SR 434	I-4 to Douglas Avenue		D	Yes	Yes	
SR 434	Douglas Avenue to Wekiva Springs Road		D		Yes	
SR 434	Wekiva Springs Road to Sand Lake Road		D		Yes	
SR 434	SR 436 to County Line		D		Yes	
SR 436	Red Bug Lake Road to US 17-92	2	D		Yes	
SR 436	US 17-92 to CR 427 (Longwood Avenue)	2	D		Yes	
SR 436	CR 427 (Longwood) to CR 427 (Maitland)	2	D		Yes	
SR 436	CR 427 (Maitland) to Palm Springs Drive	2	E		Yes	
SR 436	Palm Springs Drive to Northlake Boulevard	2	E		Yes	
SR 436	Northlake Boulevard to I-4 East Ramp	2	E	Yes	Yes	
SR 436	I-4 East Ramp to Wymore-Douglas	2	E		Yes	
SR 436	Wymore-Douglas to Lynchfield Avenue	2	E		Yes	
SR 436	Lynchfield Avenue to SR 434	2	D		Yes	
SR 436	SR 434 to Bear Lake Road	2	D		Yes	
SR 436	Bear Lake Road to Hunt Club Boulevard	2	D	Yes	Yes	
SR 436	Hunt Club Boulevard to Orange County Line	2	D		Yes	
SR 46	I-4 to Rinehart Road		D	Yes	Yes	
SR 46	Mellonville Avenue to Beardall Avenue		E		Yes	
SR 46	Beardall Avenue to SR 415		D		Yes	
US 17-92	Orange County Line to Lake of the Woods	2	D		Yes	
US 17-92	Lake of the Wood to SR 436	2	D	Yes	Yes	
US 17-92	SR 436 to Triplet Lake Drive	2	D		Yes	
US 17-92	Triplet Lake Drive to Seminola-Dogtrack	2	D		Yes	
US 17-92	Seminola-Dogtrack to SR 434	2	D		Yes	
US 17-92	SR 434 to CR 427/-SR 419		D		Yes	
US 17-92	CR 427-SR 419 to CR 427		D		Yes	
US 17-92	Lake Mary Boulevard to Airport Boulevard		D		Yes	

(1) Additional lanes or other improvements programmed, as listed in the Florida Department of Transportation Five Year Work Plan.

(2) Policy Constrained.





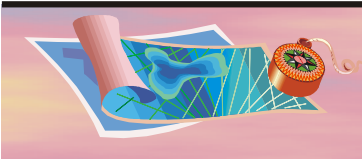
# Vision 2020 Comprehensive Plan Seminole County, Florida

## Five Year Capital Schedule of Improvements

### Element: TRAFFIC CIRCULATION

<u>Project Title and PID Number</u>		<u>2003/04</u>	<u>2004/05</u>	<u>2005/06</u>	<u>2006/07</u>	<u>2007/08</u>
ENG AIRPORT BOULEVARD PH II (U.S. 17/92-0057 01 - DE51011Z CIE	Proj Oper	\$8,374,092 \$0	\$0 \$0	\$0 \$0	\$0 \$0	\$0 \$0
ENGR C-15 (S.R. 46-U.S. 17/92) 0058 01 - DE51301Z CIE	Proj Oper	\$12,630,108 \$0	\$2,210,000 \$0	\$0 \$0	\$0 \$0	\$0 \$0
ENGR AIRPORT BOULEVARD PH III (C.R. 46A-0061 01 - DE51021Z CIE	Proj Oper	\$12,252,149 \$0	\$0 \$0	\$0 \$0	\$0 \$0	\$0 \$0
ENGR BUNNEL RD/MAGNOLIA ST (S.R. 434-EDE 0062 01 - DE53051Z CIE	Proj Oper	\$8,709,037 \$0	\$600,000 \$0	\$0 \$0	\$0 \$0	\$0 \$0
ENGR CHAPMAN ROAD (S.R. 426-S.R. 434) 0063 01 - DE54011Z CIE	Proj Oper	\$9,646,641 \$0	\$0 \$0	\$0 \$0	\$0 \$0	\$0 \$0
ENGR CHULUOTA BYPASS/C.R. 419-SNOWHILL R 0064 02 - DE56022Z CIE	Proj Oper	\$533,463 \$0	\$0 \$0	\$0 \$0	\$0 \$0	\$0 \$0
ENGR C.R. 419 PHASE I & II (LOCKWOOD ROA 0066 03 - CIE	Proj Oper	\$1,028,044 \$0	\$0 \$0	\$0 \$0	\$0 \$0	\$0 \$0
ENGR CR 427/S.R. 436-CHARLOTTE ST 0067 02 - DE51032Z CIE	Proj Oper	\$4,524,703 \$0	\$0 \$0	\$0 \$0	\$0 \$0	\$0 \$0
ENGR C.R. 427/S.R. 434-LONGWOOD HILLS RD 0068 01 - DE51041Z CIE	Proj Oper	\$688,979 \$0	\$0 \$0	\$0 \$0	\$0 \$0	\$0 \$0
ENGR C.R. 427/LONGWOOD HILLS RD-LONGWOOD 0069 01 - DE51051Z CIE	Proj Oper	\$598,201 \$0	\$0 \$0	\$0 \$0	\$0 \$0	\$0 \$0
ENGR CR427/PHIII/IV LONGWOOD/LAKE MARY R 0070 01 - PE51061Z CIE	Proj Oper	\$49,344 \$0	\$0 \$0	\$0 \$0	\$0 \$0	\$0 \$0
ENGR CR427/PHV/VI HESTER AVE-LK MARY BLV 0072 02 - DE56047Z CIE	Proj Oper	\$1,305,584 \$0	\$0 \$0	\$0 \$0	\$0 \$0	\$0 \$0
ENGR DODD ROAD (RED BUG LAKE RD-HOWELL E 0075 02 - DE55012Z CIE	Proj Oper	\$9,552,961 \$0	\$0 \$0	\$0 \$0	\$0 \$0	\$0 \$0
ENGR EDEN PARK ROAD (ORANGE COUNTY LINE- 0077 01 - DE53061Z CIE	Proj Oper	\$8,113,389 \$0	\$0 \$0	\$0 \$0	\$0 \$0	\$0 \$0
ENGR - LAKE MARY BLVD. PH III (US 17/92- 0101 01 - DE56231Z CIE	Proj Oper	\$2,893,004 \$0	\$0 \$0	\$0 \$0	\$0 \$0	\$0 \$0
ENGR - E LK MARY BLVD/SILVER LK DR (SANF 0104 01 - DE56241Z CIE	Proj Oper	\$5,553,547 \$0	\$0 \$0	\$0 \$0	\$0 \$0	\$0 \$0
ENGR EAST LAKE MARY BLVD 0107 01 - DE56251Z CIE	Proj Oper	\$23,837,001 \$0	\$0 \$0	\$0 \$0	\$0 \$0	\$0 \$0
ENGR C.R. 46A III (COUNTRY CLUB-OLD LAKE 0114 01 - DE51111Z CIE	Proj Oper	\$7,338,974 \$0	\$0 \$0	\$0 \$0	\$0 \$0	\$0 \$0
ENGR LAKE DRIVE (SEMINOLA BLVD-TUSKAWILL 0124 01 - DE55021Z CIE	Proj Oper	\$14,294,470 \$0	\$0 \$0	\$0 \$0	\$0 \$0	\$0 \$0
ENGR DOUGLAS/MARKHAM WOODS ROAD INTER 0129 02 - DE56172Z CIE	Proj Oper	\$960,294 \$0	\$0 \$0	\$0 \$0	\$0 \$0	\$0 \$0
ENGR SAND LAKE ROAD (HUNT CLUB BLVD-S.R. 0137 01 - DE53071Z CIE	Proj Oper	\$8,374,880 \$0	\$5,000,000 \$0	\$0 \$0	\$0 \$0	\$0 \$0

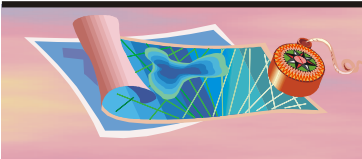




# Vision 2020 Comprehensive Plan Seminole County, Florida

<u>Project Title and PID Number</u>	<u>2003/04</u>	<u>2004/05</u>	<u>2005/06</u>	<u>2006/07</u>	<u>2007/08</u>
ENGR MISCELLANEOUS RIGHT-OF-WAY, COUNTY' Proj	\$101,403	\$0	\$0	\$0	\$0
0142 01 - DE56091X CIE Oper	\$0	\$0	\$0	\$0	\$0
ENGR WYMORE ROAD (ORANGE COUNTY LINE-S. Proj	\$5,503,285	\$0	\$0	\$0	\$0
0146 01 - DE53011Z CIE Oper	\$0	\$0	\$0	\$0	\$0
TRAF - CONTINGENCY TRAFFIC PROJECT CONTR Proj	\$150,000	\$150,000	\$150,000	\$150,000	\$150,000
0162 02 - DE70032X CIE Oper	\$0	\$0	\$0	\$0	\$0
TRAF - EDGEMON AVENUE (LAP AGREEMENT W/F Proj	\$130,000	\$0	\$0	\$0	\$0
0162 03 - PE70047X CIE Oper	\$0	\$0	\$0	\$0	\$0
ENGR HOWELL BRANCH RD/LAKE HOWELL RD-S.f Proj	\$1,440,768	\$0	\$0	\$0	\$0
0242 01 - DE51171Z CIE Oper	\$0	\$0	\$0	\$0	\$0
ENGR C.R. 425 SANFORD AVE/AIRPORT-LK MAR Proj	\$49,296	\$0	\$0	\$0	\$0
0424 01 - DE51201Z CIE Oper	\$0	\$0	\$0	\$0	\$0
ENGR RED BUG LAKE RD (S.R. 436-EAGLE CIR Proj	\$1,000,000	\$0	\$0	\$0	\$0
0539 01 - PE51311Z CIE Oper	\$0	\$0	\$0	\$0	\$0
ENGR LAKE EMMA ROAD (SAND POND RD-LONGW Proj	\$8,259,591	\$0	\$0	\$0	\$0
0541 01 - DE52021Z CIE Oper	\$0	\$0	\$0	\$0	\$0
ENGR MONTGOMERY ROAD/S.R. 436-S.R. 434 Proj	\$393,274	\$0	\$0	\$0	\$0
0544 01 - DE53041Z CIE Oper	\$0	\$0	\$0	\$0	\$0
ENGR HOWELL BRANCH ROAD/S.R. 436-S.R. 42 Proj	\$39,801	\$0	\$0	\$0	\$0
0545 01 - DE51281Z CIE Oper	\$0	\$0	\$0	\$0	\$0
ENGR-COLLECTOR TRAFFIC OPERATIONS ENHAN Proj	\$238,932	\$0	\$0	\$0	\$0
0591 03 - DE76163Z CIE Oper	\$0	\$0	\$0	\$0	\$0
ENGR - DOUGLAS AVE (CENTRAL PARKWAY-S.R. Proj	\$0	\$0	\$0	\$0	\$0
0592 01 - DE59031Z CIE Oper	\$2,108,433	\$0	\$0	\$0	\$0
ENGR - CITY OF WINTER SPGS Proj	\$210,751	\$0	\$0	\$0	\$0
0595 01 - DE59051Z CIE Oper	\$0	\$0	\$0	\$0	\$0
ENGR WINTER PARK DR-BELLE AVE/SEMINOLA-S Proj	\$0	\$0	\$0	\$0	\$0
0597 01 - DE59041Z CIE Oper	\$9,401	\$0	\$0	\$0	\$0
ENGR C.R. 46A SANFORD Proj	\$0	\$0	\$0	\$0	\$0
0598 01 - DE59071Z CIE Oper	\$1,728,022	\$0	\$0	\$0	\$0
ENGR - CITY OF OVIEDO Proj	\$0	\$0	\$0	\$0	\$0
0600 01 - DE59091Z CIE Oper	\$2,826,770	\$0	\$0	\$0	\$0
ENGR LANDSCAPING MAJOR ROAD PROJECTS Proj	\$782,715	\$0	\$0	\$0	\$0
0745 01 - DE56121Z CIE Oper	\$0	\$0	\$0	\$0	\$0
ENGR C.R. 46A/COUNTRY CLUB RD-RINEHART R Proj	\$464,596	\$0	\$0	\$0	\$0
0753 01 - DE51291Z CIE Oper	\$0	\$0	\$0	\$0	\$0
ENGR-SCHOOL SAFETY SIDEWALK PROGRAM Proj	\$91,065	\$0	\$0	\$0	\$0
1149 01 - DE56291X CIE Oper	\$0	\$0	\$0	\$0	\$0
ENGR - PARI-MUTUEL SIDEWALKS FUTURE YEAR Proj	\$0	\$0	\$446,500	\$446,500	\$446,500
1149 06 - CIE Oper	\$0	\$0	\$0	\$0	\$0
ENGR - LAKE ANN/LAKE HOWELL Proj	\$126,000	\$0	\$0	\$0	\$0
1149 07 - PE50036X CIE Oper	\$0	\$0	\$0	\$0	\$0

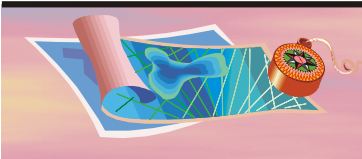




# Vision 2020 Comprehensive Plan Seminole County, Florida

<u>Project Title and PID Number</u>		<u>2003/04</u>	<u>2004/05</u>	<u>2005/06</u>	<u>2006/07</u>	<u>2007/08</u>
ENGR - SHETLAND AVE. (WINTER SPRINGS)	Proj	\$48,000	\$0	\$0	\$0	\$0
1149 08 - PE50038X CIE	Oper	\$0	\$0	\$0	\$0	\$0
ENGR - 20TH STREET	Proj	\$40,000	\$0	\$0	\$0	\$0
1149 09 - PE50039X CIE	Oper	\$0	\$0	\$0	\$0	\$0
ENGR - MELLONVILLE AVENUE	Proj	\$0	\$157,800	\$0	\$0	\$0
1149 11 - CIE	Oper	\$0	\$0	\$0	\$0	\$0
ENGR - NORTHERN WAY	Proj	\$0	\$147,500	\$0	\$0	\$0
1149 12 - CIE	Oper	\$0	\$0	\$0	\$0	\$0
ENGR - SIDEWALK CONTINGENCY (101 FUND)	Proj	\$0	\$141,200	\$0	\$0	\$0
1149 13 - CIE	Oper	\$0	\$0	\$0	\$0	\$0
ENGR - SUMMERLIN AVENUE	Proj	\$0	\$0	\$215,250	\$0	\$0
1149 14 - CIE	Oper	\$0	\$0	\$0	\$0	\$0
ENGR - LINNEAL BEACH	Proj	\$0	\$0	\$233,940	\$0	\$0
1149 15 - CIE	Oper	\$0	\$0	\$0	\$0	\$0
ENGR - CITRUS ROAD	Proj	\$76,500	\$0	\$0	\$0	\$0
1149 16 - PE50037X CIE	Oper	\$0	\$0	\$0	\$0	\$0
ENGR - DYSON DRIVE SCHOOL SAFETY SIDEWAL	Proj	\$56,000	\$0	\$0	\$0	\$0
1149 17 - PE50041X CIE	Oper	\$0	\$0	\$0	\$0	\$0
ENGR-LAKE MARY BLVD/MARKHAM WOODS TO I-4	Proj	\$0	\$0	\$150,000	\$0	\$0
1174 01 - CIE	Oper	\$0	\$0	\$0	\$0	\$0
CRA-ENGR-17-92 CRA-FERNPARK AREA	Proj	\$586,112	\$0	\$0	\$0	\$0
1332 01 - PE56421X CIE	Oper	\$0	\$0	\$0	\$0	\$0
CRA-TRAF/17/92 CRA MAST ARMS/FIRE STATIO	Proj	\$120,000	\$0	\$0	\$0	\$0
1332 03 - PE70231X CIE	Oper	\$0	\$0	\$0	\$0	\$0
RDS-ASPHALT SURFACE MAINTENANCE PROGRA	Proj	\$3,000,000	\$3,000,000	\$3,266,693	\$3,329,611	\$3,396,203
1371 01 - DE47012X CIE	Oper	\$0	\$0	\$0	\$0	\$0
RDS-SUBDIVISION RETROFITS	Proj	\$357,141	\$0	\$0	\$0	\$0
1430 01 - DE47016X CIE	Oper	\$0	\$0	\$0	\$0	\$0
RDS-OLD MIMS ROAD FROM SR46 TO CR426	Proj	\$0	\$0	\$275,000	\$0	\$0
1718 01 - CIE	Oper	\$0	\$0	\$0	\$0	\$0
ENG - SR 434 ACCESS MANAGEMENT AND ROADV	Proj	\$36,292	\$0	\$0	\$0	\$0
1735 01 - DE47022X CIE	Oper	\$0	\$0	\$0	\$0	\$0
TRAF - VARIOUS TRAFFIC STUDIES AND DESIG	Proj	\$40,000	\$0	\$0	\$0	\$0
1744 01 - DE70039X CIE	Oper	\$0	\$0	\$0	\$0	\$0
RDS-BRIDGE REHABILITATION AND MAINTENANC	Proj	\$0	\$0	\$0	\$0	\$0
1762 01 - DE47095X CIE	Oper	\$351,222	\$375,000	\$95,977	\$97,896	\$0
ENGR - MINOR ROAD PROGRAM - FUTURE YEARS	Proj	\$0	\$0	\$6,000,000	\$4,300,000	\$1,700,000
1916 17 - CIE	Oper	\$0	\$0	\$0	\$0	\$0
ENGR - MINOR ROAD PROGRAM (11541 FUND)	Proj	\$187,500	\$0	\$187,500	\$187,500	\$187,500
1916 20 - PE70119X CIE	Oper	\$0	\$0	\$0	\$0	\$0
ENGR - RICHMOND AVENUE	Proj	\$250,000	\$0	\$0	\$0	\$0
1916 21 - PE51323Z CIE	Oper	\$0	\$0	\$0	\$0	\$0



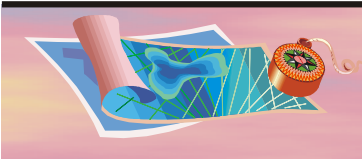


# Vision 2020 Comprehensive Plan Seminole County, Florida

<u>Project Title and PID Number</u>		<u>2003/04</u>	<u>2004/05</u>	<u>2005/06</u>	<u>2006/07</u>	<u>2007/08</u>
ENGR - BEARDALL AVENUE	Proj	\$700,000	\$0	\$0	\$0	\$0
1916 22 - PE51329Z CIE	Oper	\$0	\$0	\$0	\$0	\$0
ENGR - RED BUG LAKE RD @ TUSKAWILLA RD.	Proj	\$249,999	\$0	\$0	\$0	\$0
1916 23 - PE70127X CIE	Oper	\$0	\$0	\$0	\$0	\$0
ENGR - FIRST STREET FROM ORANGE TO SYLVA	Proj	\$300,000	\$0	\$0	\$0	\$0
1916 24 - PE51324Z CIE	Oper	\$0	\$0	\$0	\$0	\$0
ENGR - WEST CRYSTAL DRIVE	Proj	\$125,000	\$0	\$0	\$0	\$0
1916 25 - PE51325Z CIE	Oper	\$0	\$0	\$0	\$0	\$0
ENGR - GENOVA CURVE	Proj	\$130,000	\$0	\$0	\$0	\$0
1916 26 - PE51326Z CIE	Oper	\$0	\$0	\$0	\$0	\$0
ENGR - MINOR ROAD PROGRAM CONTINGENCY (1	Proj	\$200,001	\$0	\$0	\$0	\$0
1916 27 - PE51308Z CIE	Oper	\$0	\$0	\$0	\$0	\$0
ENGR - CR 426	Proj	\$0	\$600,000	\$0	\$0	\$0
1916 28 - CIE	Oper	\$0	\$0	\$0	\$0	\$0
ENGR - OLD MIMS ROAD	Proj	\$0	\$300,000	\$0	\$0	\$0
1916 29 - CIE	Oper	\$0	\$0	\$0	\$0	\$0
ENGR - SLAVIA ROAD @ SR426	Proj	\$0	\$100,000	\$0	\$0	\$0
1916 30 - CIE	Oper	\$0	\$0	\$0	\$0	\$0
ENGR - WEKIVA SPRINGS ROAD @ SWEETWATEF	Proj	\$0	\$500,000	\$0	\$0	\$0
1916 31 - CIE	Oper	\$0	\$0	\$0	\$0	\$0
ENGR - MARKHAM ROAD	Proj	\$0	\$75,000	\$0	\$0	\$0
1916 32 - CIE	Oper	\$0	\$0	\$0	\$0	\$0
ENGR - ORANGE B/N BRANTLEY TO DEAD END	Proj	\$0	\$100,000	\$0	\$0	\$0
1916 34 - CIE	Oper	\$0	\$0	\$0	\$0	\$0
ENGR - BEARDALL AVE	Proj	\$0	\$100,000	\$0	\$0	\$0
1916 35 - CIE	Oper	\$0	\$0	\$0	\$0	\$0
ENGR - CR 431	Proj	\$450,000	\$0	\$0	\$0	\$0
1916 36 - PE51322Z CIE	Oper	\$0	\$0	\$0	\$0	\$0
ENGR - COLLECTOR SAFETY & CAPACITY ENH/F	Proj	\$0	\$0	\$2,000,000	\$2,000,000	\$2,500,000
1920 05 - PE70117X CIE	Oper	\$0	\$0	\$0	\$0	\$0
ENGR - COLLECTOR ROADS PROGRAM	Proj	\$287,500	\$187,500	\$187,500	\$187,500	\$187,500
1920 06 - PE70118X CIE	Oper	\$0	\$0	\$0	\$0	\$0
ENGR - WEKIVA SPRINGS ROAD EXISTING 4 LA	Proj	\$345,000	\$2,300,000	\$0	\$0	\$0
1920 07 - PE51327Z CIE	Oper	\$0	\$0	\$0	\$0	\$0
ENGR - WEKIVA SPRINGS ROAD (FOX VALLEY D	Proj	\$300,000	\$0	\$0	\$0	\$0
1920 08 - PE51328Z CIE	Oper	\$0	\$0	\$0	\$0	\$0
ENGR - E. LAKE BRANTLEY RD.	Proj	\$800,000	\$0	\$0	\$0	\$0
1920 09 - PE51319Z CIE	Oper	\$0	\$0	\$0	\$0	\$0
ENGR - CELERY AVE	Proj	\$1,000,000	\$0	\$0	\$0	\$0
1920 10 - PE51321Z CIE	Oper	\$0	\$0	\$0	\$0	\$0
ENGR - COLLECTOR SAFETY/ENHANCEMENT CON	Proj	\$200,000	\$0	\$0	\$0	\$0
1920 11 - PE51317Z CIE	Oper	\$0	\$0	\$0	\$0	\$0





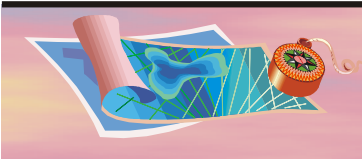


# Vision 2020 Comprehensive Plan Seminole County, Florida

<u>Project Title and PID Number</u>	<u>2003/04</u>	<u>2004/05</u>	<u>2005/06</u>	<u>2006/07</u>	<u>2007/08</u>
ENG - COUNTY SIDEWALK PROGRAM/CONTINGEN Proj	\$233,250	\$0	\$0	\$0	\$0
1925 01 - PE70069X CIE Oper	\$0	\$0	\$0	\$0	\$0
ENG - SIDEWALK PROGRAM/NORTH STREET Proj	\$427,417	\$0	\$0	\$0	\$0
1925 03 - DE70073X CIE Oper	\$0	\$0	\$0	\$0	\$0
ENG - SIDEWALK PROGRAM/W. LAKE BRANTLEY Proj	\$136,826	\$0	\$0	\$0	\$0
1925 04 - DE70074X CIE Oper	\$0	\$0	\$0	\$0	\$0
ENGR - SIDEWALK PROGRAM/E.E. WILLIAMSON Proj	\$552,765	\$0	\$0	\$0	\$0
1925 07 - PE70093X CIE Oper	\$0	\$0	\$0	\$0	\$0
ENGR - SIDEWALK PROGRAM/ WEKIVA TRAIL Proj	\$450,320	\$0	\$0	\$0	\$0
1925 11 - PE70097X CIE Oper	\$0	\$0	\$0	\$0	\$0
ENGR - COUNTY SIDEWALK PROGRAM - FUTURE Proj	\$0	\$0	\$4,380,000	\$5,160,000	\$270,000
1925 14 - CIE Oper	\$0	\$0	\$0	\$0	\$0
ENGR - SIDEWALK PROGRAM/EAGLE CIRCLE S. Proj	\$284,188	\$0	\$0	\$0	\$0
1925 15 - PE51309Z CIE Oper	\$0	\$0	\$0	\$0	\$0
ENGR - SIDEWALK PROGRAM/LAKE MARY ROAD Proj	\$59,135	\$0	\$0	\$0	\$0
1925 16 - PE51312Z CIE Oper	\$0	\$0	\$0	\$0	\$0
ENGR - SIDEWALK PROGRAM/OBRIEN ROAD Proj	\$81,400	\$0	\$0	\$0	\$0
1925 17 - PE51313Z CIE Oper	\$0	\$0	\$0	\$0	\$0
ENGR - SIDEWALK PROGRAM/SABAL PALM DRIVE Proj	\$475,960	\$0	\$0	\$0	\$0
1925 18 - PE51314Z CIE Oper	\$0	\$0	\$0	\$0	\$0
ENGR - SIDEWALK PROGRAM/SOUTH STREET Proj	\$138,690	\$0	\$0	\$0	\$0
1925 19 - PE51315Z CIE Oper	\$0	\$0	\$0	\$0	\$0
ENGR - SIDEWALK PROGRAM/W. MCCULLOCH RO Proj	\$133,621	\$0	\$0	\$0	\$0
1925 20 - PE51316Z CIE Oper	\$0	\$0	\$0	\$0	\$0
ENGR - SIDEWALK PROGRAM/OLD HOWELL BRAN Proj	\$0	\$33,277	\$0	\$0	\$0
1925 21 - CIE Oper	\$0	\$0	\$0	\$0	\$0
ENGR - SIDEWALK PROGRAM/HUNT CLUB BLVD. Proj	\$0	\$87,880	\$0	\$0	\$0
1925 22 - CIE Oper	\$0	\$0	\$0	\$0	\$0
ENGR - SIDEWALK PROGRAM/PALM SPRINGS DRI Proj	\$0	\$251,640	\$0	\$0	\$0
1925 23 - CIE Oper	\$0	\$0	\$0	\$0	\$0
ENGR - SIDEWALK PROGRAM/SIPES AVENUE Proj	\$0	\$263,520	\$0	\$0	\$0
1925 24 - CIE Oper	\$0	\$0	\$0	\$0	\$0
ENGR - SIDEWALK PROGRAM/BRISSON AVENUE Proj	\$0	\$210,560	\$0	\$0	\$0
1925 25 - CIE Oper	\$0	\$0	\$0	\$0	\$0
ENGR - SIDEWALK PROGRAM/LAKE MARKHAM RC Proj	\$0	\$249,960	\$0	\$0	\$0
1925 26 - CIE Oper	\$0	\$0	\$0	\$0	\$0
ENGR - SIDEWALK PROGRAM/OLD LAKE MARY RC Proj	\$0	\$287,640	\$0	\$0	\$0
1925 27 - CIE Oper	\$0	\$0	\$0	\$0	\$0
ENGR - SIDEWALK PROGRAM/ORANGE BLVD. Proj	\$0	\$413,240	\$0	\$0	\$0
1925 28 - CIE Oper	\$0	\$0	\$0	\$0	\$0
ENGR - SIDEWALK PROGRAM/SOUTHWEST ROAD Proj	\$0	\$153,866	\$0	\$0	\$0
1925 29 - CIE Oper	\$0	\$0	\$0	\$0	\$0



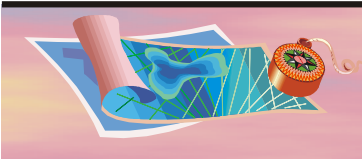




# Vision 2020 Comprehensive Plan Seminole County, Florida

<u>Project Title and PID Number</u>	<u>2003/04</u>	<u>2004/05</u>	<u>2005/06</u>	<u>2006/07</u>	<u>2007/08</u>
ENGR - SIDEWALK PROGRAM/LONGWOOD LAKE M Proj	\$0	\$192,280	\$0	\$0	\$0
1925 30 - CIE Oper	\$0	\$0	\$0	\$0	\$0
ENGR - SIDEWALK PROGRAM/GREEN WAY BLVD Proj	\$0	\$308,680	\$0	\$0	\$0
1925 31 - CIE Oper	\$0	\$0	\$0	\$0	\$0
ENGR - SIDEWALK PROGRAM/OLD GENEVA ROAD Proj	\$0	\$257,787	\$0	\$0	\$0
1925 32 - CIE Oper	\$0	\$0	\$0	\$0	\$0
RDS - CONTINGENCY PAVING OF VARIOUS ROAD Proj	\$620,000	\$0	\$500,000	\$500,000	\$0
1926 03 - PE47098X CIE Oper	\$0	\$0	\$0	\$0	\$0
TRAF - SAFETY PROJECT: BEAR LAKE AT SR 4 Proj	\$60,000	\$0	\$0	\$0	\$0
1930 21 - PE70264Z CIE Oper	\$0	\$0	\$0	\$0	\$0
ENGR - MAJOR RD SYSTEM PROJECTS/FUTURE Y Proj	\$150,000	\$0	\$0	\$1,000,000	\$10,000,000
1981 01 - CIE Oper	\$0	\$0	\$0	\$0	\$0
TRAF - SAFETY PROJECT: ORANGE BLVD @ MAR Proj	\$186,620	\$0	\$0	\$0	\$0
2023 02 - PE76177Z CIE Oper	\$0	\$0	\$0	\$0	\$0
TRAF - SAFETY PROJECT: LOCKWOOD BLVD @ M Proj	\$0	\$140,000	\$0	\$0	\$0
2023 09 - PE76185Z CIE Oper	\$0	\$0	\$0	\$0	\$0
TRAF - SAFETY PROJECT:SR 426 @ WILDERNES Proj	\$65,000	\$0	\$0	\$0	\$0
2023 11 - PE76187Z CIE Oper	\$0	\$0	\$0	\$0	\$0
TRAF - SAFETY PROJECT:SR 46 @ LONGWOOD M Proj	\$0	\$70,000	\$0	\$0	\$0
2023 13 - PE76189Z CIE Oper	\$0	\$0	\$0	\$0	\$0
TRAF - SAFETY PROJECT:SOUTHWEST ROAD RAI Proj	\$0	\$150,000	\$0	\$0	\$0
2023 16 - PE76193Z CIE Oper	\$0	\$0	\$0	\$0	\$0
TRAF - SAFETY PROJECT:FUND 11541 CONTING Proj	\$120,000	\$180,000	\$600,000	\$600,000	\$625,000
2023 18 - PE76195Z CIE Oper	\$0	\$0	\$0	\$0	\$0
TRAF - SAFETY PROJECT:COLLINS @ US 17-92 Proj	\$60,000	\$0	\$0	\$0	\$0
2023 19 - PE76249Z CIE Oper	\$0	\$0	\$0	\$0	\$0
TRAF - SAFETY PROJECT:CR 426 @ OLD MIMS Proj	\$65,000	\$0	\$0	\$0	\$0
2023 20 - PE76234Z CIE Oper	\$0	\$0	\$0	\$0	\$0
TRAF - SAFETY PROJECT:C-15/UPSALA ROAD @ Proj	\$0	\$60,000	\$0	\$0	\$0
2023 24 - CIE Oper	\$0	\$0	\$0	\$0	\$0
TRAF - SAFETY PROJECT:SR 436 AT BEAR LAK Proj	\$140,000	\$0	\$0	\$0	\$0
2023 25 - PE76248Z CIE Oper	\$0	\$0	\$0	\$0	\$0
TRAF - SAFETY PROJECT: SPRING LAKE ELEME Proj	\$25,000	\$0	\$0	\$0	\$0
2025 16 - PE76239Z CIE Oper	\$0	\$0	\$0	\$0	\$0
TRAF - SAFETY PROJECT: ELEMENTARY SCHOOL Proj	\$100,000	\$0	\$0	\$0	\$0
2025 17 - PE76241Z CIE Oper	\$0	\$0	\$0	\$0	\$0
TRAF - SAFETY PROJECT: ENGLISH ESTATES E Proj	\$100,000	\$0	\$0	\$0	\$0
2025 18 - PE76242Z CIE Oper	\$0	\$0	\$0	\$0	\$0
TRAF - SAFETY PROJECT:NEW LAWTON CHILES Proj	\$0	\$140,000	\$0	\$0	\$0
2025 19 - CIE Oper	\$0	\$0	\$0	\$0	\$0
ENGR - FUTURE YEARS - COUNTY/CITY COST S Proj	\$1,500,000	\$3,000,000	\$3,000,000	\$2,000,000	\$0
2052 01 - PE51318Z CIE Oper	\$0	\$0	\$0	\$0	\$0

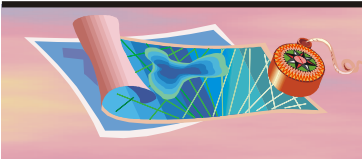




# Vision 2020 Comprehensive Plan Seminole County, Florida

<u>Project Title and PID Number</u>		<u>2003/04</u>	<u>2004/05</u>	<u>2005/06</u>	<u>2006/07</u>	<u>2007/08</u>
ENGR - FUTURE YEARS - GCS	Proj	\$187,500	\$187,500	\$187,500	\$187,500	\$187,500
2053 01 - PE70114X CIE	Oper	\$0	\$0	\$0	\$0	\$0
ENGR - SR434/MONTGOMERY TO I-4	Proj	\$1,200,000	\$0	\$7,000,000	\$4,000,000	\$0
2053 02 - PE70115X CIE	Oper	\$0	\$0	\$0	\$0	\$0
ENGR - SR434/I-4 TO PALM SP-RANGELINE	Proj	\$1,500,000	\$0	\$0	\$15,000,000	\$0
2053 03 - PE70124X CIE	Oper	\$0	\$0	\$0	\$0	\$0
ENGR - SR434/PALM SP/RANGLINE TO 427	Proj	\$0	\$0	\$2,500,000	\$0	\$0
2053 04 - CIE	Oper	\$0	\$0	\$0	\$0	\$0
TRAF SIGNALS & SIGNAL SYSTEMS CONTINGEN	Proj	\$0	\$0	\$525,000	\$575,000	\$625,000
2055 01 - PE76228Z CIE	Oper	\$0	\$0	\$0	\$0	\$0
TRAF - MAST ARMS: RED BUG LAKE RD @ NOD	Proj	\$0	\$118,750	\$0	\$0	\$0
2055 02 - CIE	Oper	\$0	\$0	\$0	\$0	\$0
TRAF - MAST ARMS: RED BUG LAKE RD @ TUS	Proj	\$112,500	\$0	\$0	\$0	\$0
2055 03 - PE76235Z CIE	Oper	\$0	\$0	\$0	\$0	\$0
TRAF - MAST ARMS: RED BUG LAKE RD @ RIS	Proj	\$112,500	\$0	\$0	\$0	\$0
2055 04 - PE76236Z CIE	Oper	\$0	\$0	\$0	\$0	\$0
TRAF - MAST ARMS: RED BUG LAKE RD @ SLA	Proj	\$0	\$118,750	\$0	\$0	\$0
2055 05 - CIE	Oper	\$0	\$0	\$0	\$0	\$0
TRAF - MAST ARMS: CR 427 @ SR 417 EAST	Proj	\$112,500	\$0	\$0	\$0	\$0
2055 06 - PE76246Z CIE	Oper	\$0	\$0	\$0	\$0	\$0
TRAF - MAST ARMS: CR 427 @ SR 417 WEST	Proj	\$112,500	\$0	\$0	\$0	\$0
2055 07 - PE76247Z CIE	Oper	\$0	\$0	\$0	\$0	\$0
TRAF - MAST ARMS: WEKIVA SPRINGS BLVD @	Proj	\$0	\$118,750	\$0	\$0	\$0
2055 08 - CIE	Oper	\$0	\$0	\$0	\$0	\$0
TRAF - MAST ARMS: WEKIVA SPRINGS BLVD @	Proj	\$0	\$118,750	\$0	\$0	\$0
2055 09 - CIE	Oper	\$0	\$0	\$0	\$0	\$0
TRAF COMMUNICATION NETWORK CONTINGENC\	Proj	\$0	\$0	\$200,000	\$200,000	\$240,000
2056 01 - PE76229Z CIE	Oper	\$0	\$0	\$0	\$0	\$0
TRAF - FIBER OPTICS: CR 427: 17/92 TO TO	Proj	\$100,000	\$0	\$0	\$0	\$0
2056 02 - PE76237Z CIE	Oper	\$0	\$0	\$0	\$0	\$0
TRAF - FIBER OPTICS: US 17/92: COUNTY HO	Proj	\$100,000	\$0	\$0	\$0	\$0
2056 03 - PE76238Z CIE	Oper	\$0	\$0	\$0	\$0	\$0
TRAF - FIBER OPTICS: SR 419: 17/92 TO SR	Proj	\$0	\$100,000	\$0	\$0	\$0
2056 04 - CIE	Oper	\$0	\$0	\$0	\$0	\$0
TRAF - FIBER OPTICS: US 17/92: LAKE MARY	Proj	\$0	\$100,000	\$0	\$0	\$0
2056 05 - CIE	Oper	\$0	\$0	\$0	\$0	\$0
TRAF ATMS CONTINGENCY	Proj	\$0	\$0	\$400,000	\$400,000	\$480,000
2057 01 - PE76231Z CIE	Oper	\$0	\$0	\$0	\$0	\$0
ADVANCED TRAFFIC MANAGEMENT SYSTEM (ATM	Proj	\$200,000	\$200,000	\$0	\$0	\$0
2057 02 - PE76243Z CIE	Oper	\$0	\$0	\$0	\$0	\$0
ADVANCED TRAFFIC MANAGEMENT SYSTEM (ATM	Proj	\$200,000	\$200,000	\$0	\$0	\$0
2057 03 - PE76244Z CIE	Oper	\$0	\$0	\$0	\$0	\$0

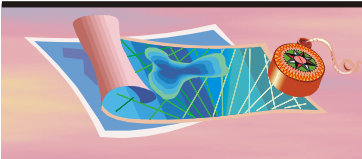




# Vision 2020 Comprehensive Plan Seminole County, Florida

<u>Project Title and PID Number</u>		<u>2003/04</u>	<u>2004/05</u>	<u>2005/06</u>	<u>2006/07</u>	<u>2007/08</u>
TRAF TRAFFIC CALMING CONTINGENCY	Proj	\$150,000	\$150,000	\$150,000	\$150,000	\$180,000
2058 01 - PE76232Z CIE	Oper	\$0	\$0	\$0	\$0	\$0
ENG SAFETY/SIDWALK PROJECT (11541 FUND)	Proj	\$286,989	\$187,500	\$187,500	\$187,500	\$187,500
2062 04 - PE70122X CIE	Oper	\$0	\$0	\$0	\$0	\$0
ENG- SMALL SIDEWALK SAFETY RESPONSE	Proj	\$85,000	\$50,000	\$50,000	\$50,000	\$50,000
2093 01 - PE70112X CIE	Oper	\$0	\$0	\$0	\$0	\$0
TRAFFIC - CONTINGENCY FUND 11541 FOR THE	Proj	\$0	\$0	\$100,000	\$100,000	\$120,000
2099 01 - CIE	Oper	\$0	\$0	\$0	\$0	\$0
ITS PROJECTS & TECHNOLOGY ENHANCEMENT -	Proj	\$100,000	\$100,000	\$0	\$0	\$0
2099 02 - PE76245Z CIE	Oper	\$0	\$0	\$0	\$0	\$0
ENG - RED BUG LAKE RD @ SR 436	Proj	\$2,000,000	\$0	\$0	\$0	\$19,000,000
2263 01 - PE70125X CIE	Oper	\$0	\$0	\$0	\$0	\$0
ENG - US 17/92 TO FERNWOOD	Proj	\$8,000,000	\$0	\$0	\$0	\$0
2265 01 - PE70126X CIE	Oper	\$0	\$0	\$0	\$0	\$0
RDS-PAVEMENT REHABILITATION	Proj	\$302,654	\$0	\$0	\$0	\$0
2270 01 - PE47122X CIE	Oper	\$0	\$0	\$0	\$0	\$0
RDS-PAVEMENT REHABILITATION	Proj	\$891,683	\$0	\$0	\$0	\$0
2270 02 - PB47123X CIE	Oper	\$0	\$0	\$0	\$0	\$0
RDS-PAVEMENT REHABILITATION	Proj	\$352,536	\$0	\$0	\$0	\$0
2270 03 - PE47124X CIE	Oper	\$0	\$0	\$0	\$0	\$0
RDS-PAVEMENT REHABILITATION	Proj	\$108,637	\$0	\$0	\$0	\$0
2270 04 - PE47125X CIE	Oper	\$0	\$0	\$0	\$0	\$0
RDS-PAVEMENT REHABILITATION	Proj	\$13,482	\$0	\$0	\$0	\$0
2270 05 - PE47126X CIE	Oper	\$0	\$0	\$0	\$0	\$0
RDS-PAVEMENT REHABILITATION	Proj	\$0	\$152,242	\$0	\$0	\$0
2270 06 - CIE	Oper	\$0	\$0	\$0	\$0	\$0
RDS-PAVEMENT REHABILITATION	Proj	\$0	\$101,874	\$0	\$0	\$0
2270 07 - CIE	Oper	\$0	\$0	\$0	\$0	\$0
RDS-PAVEMENT REHABILITATION	Proj	\$0	\$167,263	\$0	\$0	\$0
2270 08 - CIE	Oper	\$0	\$0	\$0	\$0	\$0
RDS-PAVEMENT REHABILITATION	Proj	\$0	\$150,558	\$0	\$0	\$0
2270 09 - CIE	Oper	\$0	\$0	\$0	\$0	\$0
RDS-PAVEMENT REHABILITATION	Proj	\$0	\$28,712	\$0	\$0	\$0
2270 10 - CIE	Oper	\$0	\$0	\$0	\$0	\$0
RDS-PAVEMENT REHABILITATION	Proj	\$0	\$120,078	\$0	\$0	\$0
2270 11 - CIE	Oper	\$0	\$0	\$0	\$0	\$0
RDS-PAVEMENT REHABILITATION	Proj	\$0	\$0	\$750,000	\$800,000	\$950,000
2270 12 - CIE	Oper	\$0	\$0	\$0	\$0	\$0
Element: TRAFFIC CIRCULATION	Proj	\$192,519,060	\$24,590,057	\$33,642,383	\$41,511,111	\$41,482,703
	Oper	\$7,023,848	\$375,000	\$95,977	\$97,896	\$0



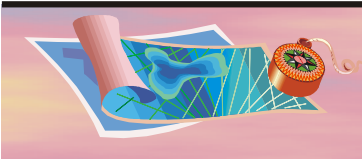


# Vision 2020 Comprehensive Plan Seminole County, Florida

## FDOT ADOPTED FIVE YEAR IMPROVEMENT PLAN - MAJOR CAPITAL PROJECTS Fiscal Years 2003/04 - 2007/08

ROADWAY SEGMENT	IMPROVEMENTS				ESTIMATED ANNUAL COSTS (\$)				
	Widen		Length (Miles)	Project Phase	Fiscal Years				
	Fr	To			2004	2005	2006	2007	2008
I-4 Add lanes - From Lake Mary Blvd. to US 17/92	4	6	6.1	PD&E	322,750	-	-	-	-
				PE	153,636	-	-	-	-
				ROW	1,766,984	-	-	-	-
				RRU	200,502	-	-	-	-
				CST	815,415	-	-	-	-
				INC	1,250,000	-	-	-	-
I-4/US 17/92 Interchange			0.2	PE	-	-	-	-	-
				ROW	250,200	2,807,700	-	-	-
				RRU	580,000	810,000	355,000	-	-
				CST	-	-	13,660,484	-	-
I-4/SR 46 Interchange			1.0	PE	-	3,100,000	-	-	-
				ENV	-	-	-	469,000	-
I-4 Master Plan Advance Right of Way Acquisition			14.1	PE	20,000	-	-	-	-
				ROW	22,525,000	-	-	-	-
				RRU	100,000	-	-	-	-
I-4/SR 417 Interchange			1.9	ROW	1,892,929	-	-	-	-
				RRU	50,000	-	-	-	-
SR 46 Lake Jesup Bridge # 77004 - E of Sanford. Replace low level bridge			1.7	PD&E	20,158	-	-	-	-
				PE	1,044,991	-	200,000	-	-
				ENV	172,000	-	-	-	-
				ROW	-	552,840	2,130,960	-	-
				CST	-	-	-	63,812,275	-
SR 46 from Lake County line to Orange Blvd.	2	4	3.5	PDE	396,523	50,000	750,000	-	-
SR 426 (Aloma Ave.) - From SR 417 (Greenway) to Mitchell Hammock Rd.	2	4	3.3	ROW	1,267,565	-	-	-	-
				RRU	202,840	-	-	-	-
				CST	772,436	-	-	-	-
				INC	259,200	-	-	-	-
SR 426 (Aloma Ave.) - From Mitchell Hammock Rd. to Pine St.	2	4	1.0	PE	109,361	150,000	-	-	-
				ROW	693,000	3,761,660	-	-	-
				RRU	-	345,000	-	2,000,000	-
				ENV	-	-	-	-	-
				CST	-	-	-	7,646,770	-
SR 434 -From McCulloch Rd. to Mitchell Hammock Rd..	2	6	3.2	ROW	3,279,576	-	-	-	-
				RRU	1,343,608	-	-	-	-
				ENV	3,090	-	-	-	-
				CST	264,796	-	-	-	-
				INC	-	600,000	-	-	-
SR 414 Maitland Blvd. Interchange at SR 434			0.06	CST	-	-	-	-	-
				LAR	3,500,000	-	-	-	-
Regional Congestion Mgmt System Projects (Not Project Specific at this Time)				CST	1,885,000	1,050,000	2,000,000	2,000,000	2,000,000
US 17/92 Interchange w/ SR 436			0.5	PE	-	-	-	-	4,025,000
SR 415 - From SR 46 to Volusia County Line	2	4	0.9	PD&E	11,597	-	-	-	-
				PE	-	35,000	1,500,000	-	-
				ENV	-	-	-	363,000	-
US 17/92 - From Shepard Rd. to Lake Mary Blvd.	2	4	3.7	PD&E	-	-	-	-	1,000,000
US 17/92 From Orange Co. line to Lake of the Woods Blvd. (curb & gutter)	6	6	1	PE	1,200,000	-	-	-	5,000
				LAR	-	-	-	-	1,200,000



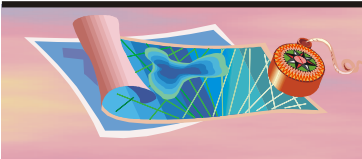


# Vision 2020 Comprehensive Plan Seminole County, Florida

ROADWAY SEGMENT	IMPROVEMENTS				ESTIMATED ANNUAL COSTS (\$)				
	Widen		Length (Miles)	Project Phase	Fiscal Years				
	Fr	To			2004	2005	2006	2007	2008
Trail - Seminole/Wekiva Phase II from SR 434 to Wekiva River Bike Path			9.0	CST	500,000	-	-	-	-
Sidewalk - 16th St. Roosevelt Ave./ Lake Ave.			0.7	CST LAR	- 127,000	- -	- -	- -	- -
Trail - Cross Seminole I & II from Red Bug Lake Rd. to Sem/Org line				CST LAR	2,300,000 -	- -	- -	- 2,012,500	- -
Trail - Cross Seminole north from Gardenia Ave/Wade St.				CST LAR	2,000,000 -	- -	- -	- 2,000,000	- -
Trail - Cross Seminole from Red Bug Lake Rd to Franklin St south of SR 426				CST LAR	2,000,000 -	- -	- -	- -	- 2,000,000
Trail - Sem/Wekiva Pedbridge Markahm Woods Rd /SR 434			5	LAR	-	-	2,130,000	-	-
Trail - Seminole/Wekiva Phase 1, SR 436/434				CST	100,000	-	-	-	-
Connector - S. Park from West 25th St. to W. 26th St.				CST	-	96,150	-	-	-
<b>TOTALS</b>					<b>53,385,463</b>	<b>13,358,350</b>	<b>22,726,444</b>	<b>80,303,545</b>	<b>10,230,000</b>

- CST --Construction phase
- ENV – Environmental Work
- INC – Construction Bonus Phase
- LAR – Local Advance Reimbursement Funding
- PD&E – Project Development & Environmental Study
- PE – Preliminary Engineering phase
- ROW – Right of Way phase
- RRU – Railroad or Utilities Work





# Vision 2020 Comprehensive Plan Seminole County, Florida

## FDOT ADOPTED FIVE YEAR IMPROVEMENT PLAN - MAJOR CAPITAL PROJECTS ORLANDO - SANFORD AIRPORT

IMPROVEMENTS	FUNDING	2004	2005	2006	2007	2008
Extend Runway 09-27L	Capital Funding	5,000,000	5,500,000	0	0	0
Extend Runway 09-27L to 12,000 feet	Capital Funding	0	0	6,000,000	0	0
Construct/extend Taxiway Alpha	Capital Funding	0	0	5,555,554	0	0
Construct/extend Apron Expansion	Capital Funding	0	0	0	5,555,554	0
Construct/extend Apron Northside	Capital Funding	0	0	0	0	3,333,332
Construct/extend Apron SE Runway	Capital Funding	1,000,000	0	0	0	0
Construct/extend N Taxiways A,L, P	Capital Funding	661,000	0	0	0	0
Design of Taxiway Bravo, Phase 1	Capital Funding	4,480,000	0	0	0	0
Reconstruct Overlay Runway 9L-27R	Capital Funding	0	0	4,000,000	0	0
Reconstruct Overlay Taxiway B	Capital Funding	0	0	0	3,888,888	0
Runway 18-36 Edge lights	Capital Funding	1,200,000	0	0	0	0
Rehab W General Aviation Ramp	Capital Funding	0	0	0	0	4,833,332
Reconstruct/repair Taxiway R,F,& E	Capital Funding	0	3,333,333	0	0	0
Extend Runway 18-36 to 8000 feet	Capital Funding	0	3,000,000	0	0	0
Expand Terminal	Capital Funding	2,745,354	0	0	0	0
Expand Terminal A	Capital Funding	0	3,333,333	0	0	0
Acquisition of Noise Sensitive Lands	Capital Funding	0	0	0	3,000,000	0
<b>TOTALS</b>		<b>15,086,354</b>	<b>15,166,666</b>	<b>15,555,554</b>	<b>12,444,442</b>	<b>8,166,664</b>

