

**SEMINOLE COUNTY GOVERNMENT
AGENDA MEMORANDUM**

SUBJECT: Vacate and Abandon a Utility Easement on Lots 17 and 18, English Estates, Unit 1

DEPARTMENT: Planning & Development **DIVISION:** Development Review

AUTHORIZED BY: Donald S. Fisher **CONTACT:** Shannon Suffron **EXT.** 7337

Agenda Date 11/26/02 **Regular** ☐ **Consent** ☐ **Work Session** ☐ **Briefing** ☐
Public Hearing – 1:30 ☐ **Public Hearing – 7:00** ☐

MOTION/RECOMMENDATION:

Adopt the resolution to vacate and abandon a 5.8 foot portion of a 14 foot utility easement on Lots 17 and 18, Unit 1, Block H, English Estates, as recorded in the Public Records of Seminole County, Florida in Plat Book 13, Page 1 in Section 20, Township 21, Range 30 and further described as 2220 Derbyshire Rd – Jerome McDonough (Applicant).

District 4 – Henley (Shannon C. Suffron – Planner) *SS . Hen*

BACKGROUND:

The applicant is requesting to vacate and abandon a 5.8 foot portion of a 14 foot platted utility easement in order to accommodate an existing pool and pool deck. The area of the easement vacate does not contain any utilities and the applicant has provided letters for the applicable utility companies stating no objection to the request.

STAFF RECOMMENDATION:

Staff recommends adoption of the Resolution to vacate and abandon the subject utility easement.

District 4 - Henley

Attachments: Resolution

Exhibit A: Sketch of description

Exhibit B: Location map

Reviewed by:	<u>KZC</u>
Co Atty:	<u>KZC</u>
DFS:	<u></u>
Other:	<u></u>
DCM:	<u></u>
CM:	<u></u>
File No.	<u>cpdd01</u>

THE FOLLOWING RESOLUTION WAS ADOPTED AT THE REGULAR MEETING OF THE BOARD OF COUNTY COMMISSIONERS OF SEMINOLE COUNTY, FLORIDA ON THE 26th DAY OF November A.D., 2002.

RESOLUTION TO VACATE AND ABANDON A UTILITY EASEMENT

.....

Whereas, a Petition was presented on behalf of
JEROME R & EILEEN C MC DONOUGH

to the Board of County Commissioners of Seminole County, Florida, requesting the closing, vacating, and abandoning of the following described utility easement to-wit:

Legal Description

Commence at the Southeast corner of Lot 17, Block H, English Estates, Unit One, as recorded in Plat Book 13, Page 1, Public Records of Seminole County, Florida; Thence N89°47’30”W along South line of said Lot 17 a distance of 51.30 feet; Thence N00°46’45”W a distance of 8.20 feet for a point of beginning; Thence N00°46’45”W a distance of 5.80 feet; Thence S89°47’30”E a distance of 98.00 feet; Thence S00°46’45”E a distance of 5.80 feet; Thence N89°47’30”W a distance of 98.00 feet to the point of beginning. Contains 568 square feet or 0.0130 acres more or less.

Whereas, after due consideration the Board of County Commissioners of Seminole County, Florida, having determined that the abandonment of the above described utility easement is to the best interest of the County and the public in that the area in question is not needed for utility purposes and not necessary for public need.

NOW THEREFORE BE IT RESOLVED by the Board of County Commissioners of Seminole County, Florida, that the above described utility easement be, and the same is hereby abandoned, closed, and vacated, and that all right in and to the same on behalf of the County and the public be, and the same is hereby disclaimed.

PASSED AND ADOPTED this 26th day of November A.D., 2002.

ATTEST:	BOARD OF COUNTY COMMISSIONERS OF SEMINOLE COUNTY, FLORIDA
 _____ MARYANNE MORSE CLERK OF THE CIRCUIT COURT SEMINOLE COUNTY, FLORIDA	BY: _____ DARYL G. MCLAIN CHAIRMAN

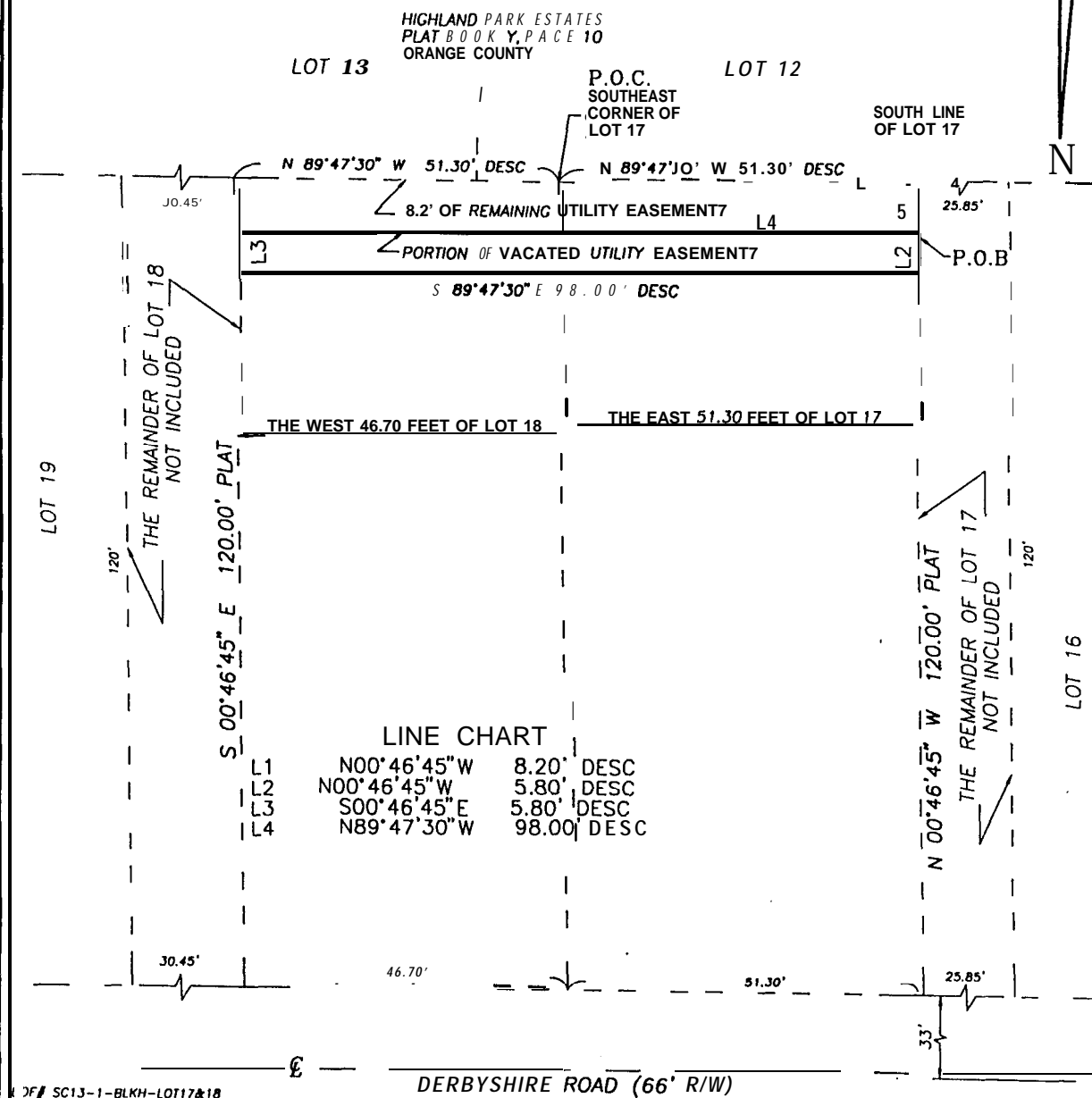
SKETCH OF DESCRIPTION

EXHIBIT A

PARTIAL VACATION OF UTILITY EASEMENT

COMMENCE AT THE SOUTHEAST CORNER OF LOT 17, BLOCK H, ENGLISH ESTATES, UNIT ONE, AS RECORDED IN PLAT BOOK 13, PAGE 1, PUBLIC RECORDS OF SEMINOLE COUNTY, FLORIDA; THENCE N89°47'30"W ALONG SOUTH LINE OF SAID LOT 17 A DISTANCE OF 51.30 FEET; THENCE N00°46'45"W A DISTANCE OF 8.20 FEET FOR A POINT OF BEGINNING; THENCE N00°46'45"W A DISTANCE OF 5.80 FEET; THENCE S89°47'30"E A DISTANCE OF 98.00 FEET; THENCE S00°46'45"E A DISTANCE OF 5.80 FEET; THENCE N89°47'30"W A DISTANCE OF 98.00 FEET TO THE POINT OF BEGINNING.

CONTAINS 568 SQUARE FEET OR 0.0130 ACRES MORE OR LESS.



SC13-1-BLKH-LOT17&18

SKETCH OF DESCRIPTION, THIS NOT A BOUNDARY SURVEY.

LEGEND

BC - BACK OF CURB	CBW - CONCRETE BLOCK WALL
CALC - CALCULATED	CW - CONCRETE MONUMENT
CL - CENTERLINE	COVD - COVERED
CLF - CHAIN LINK FENCE	CW - CONCRETE WALKWAY
CONC - CONCRETE	DE - DRAINAGE EASEMENT
CP - CONCRETE PAD	ESMT - EASEMENT
CA - CENTRAL ANGLE	FFE - FINISHED FLOOR ELEVATION
DESC - DESCRIPTION	IP - IRON PIPE
DW - DRIVEWAY	L - ARC LENGTH
EP - EDGE OF PAVEMENT	MS - METAL SHED
ND - FOUND	OL - ON LINE
IR - IRON ROD	OL - ON LINE
MEAS - MEASURED	P&M - PLAT & MEASURED
N&D - NAIL & DISK	POB - POINT OF BEGINNING
PC - POINT OF CURVATURE	POC - POINT OF COMMENCEMENT
R - RADIUS	R/W - RIGHT OF WAY
TYP - TYPICAL	UB - UTILITY BOX
UE - UTILITY EASEMENT	WF - WOOD FENCE
LB - LICENSE BUSINESS	# - NUMBER

REVISIONS:

DATE: OCT. 14, 2002

SCALE: 1"=20'

DRAWN BY: A.P.

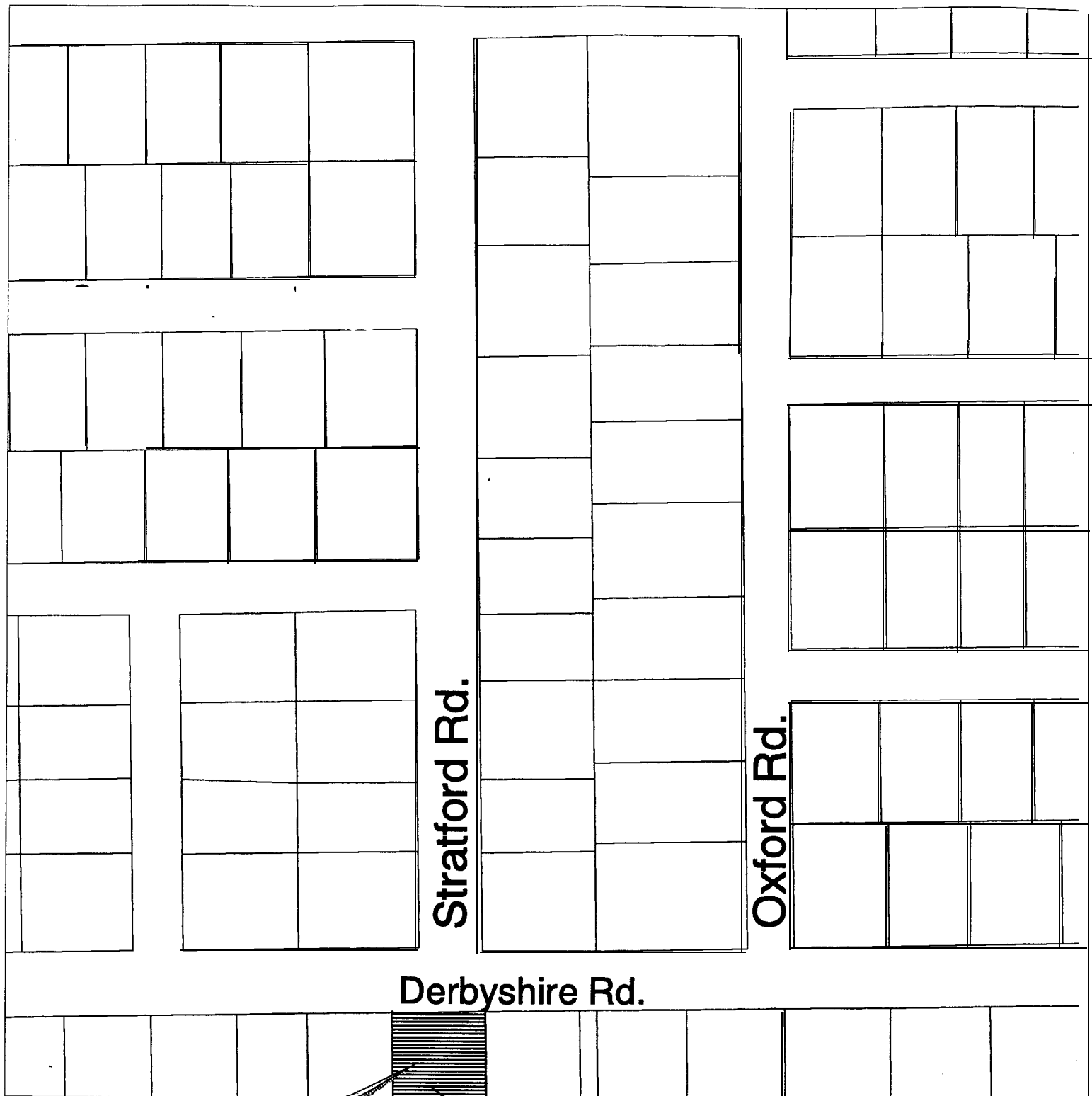
THIS LOT IS IN FLOOD ZONE X, BASED ON FLOOD INSURANCE RATE MAP NO 120289 0140 E, SEMINOLE COUNTY, FLORIDA.

M.A.P. Land Surveying, Inc.

1207 Corbett Ln.
Orlando FL 32806
PH. 407 896 4555
FAX 407 896 4874

E-Mail: Maplandsurveying@aol.com

Andrew Perry, P.S.M.
Professional Surveyor & Mapper #6124
NOT VALID WITHOUT THE SIGNATURE AND THE ORIGINAL RAISED SEAL OF THE LICENSEE



Stratford Rd.

Oxford Rd.

Derbyshire Rd.

Subject Parcel



Location Map
English Estates
Lots 17 & 18
Utility Easement Vacate



EXHIBIT B