

SEMINOLE COUNTY GOVERNMENT AGENDA MEMORANDUM

SUBJECT: Dock and Boardwalk Approval for the Bergmann Residence

DEPARTMENT: Planning & Development **DIVISION:** Development Review

AUTHORIZED BY: Dan Matthys **CONTACT:** Wendy J. Meyer ^{UJM} **EXT.** 7333

Agenda Date <u>7/26/05</u> Regular <input type="checkbox"/> Consent <input type="checkbox"/> Work Session <input type="checkbox"/> Briefing <input type="checkbox"/>
Public Hearing – 1:30 <input checked="" type="checkbox"/> Public Hearing – 7:00 <input type="checkbox"/>

MOTION/RECOMMENDATION:

Approve the construction of a dock and boardwalk structure consisting of 14,425 square feet for the Bergmann residence located at 2521 S.R. 415 in Sanford.

District 5- Brenda Carey

BACKGROUND:

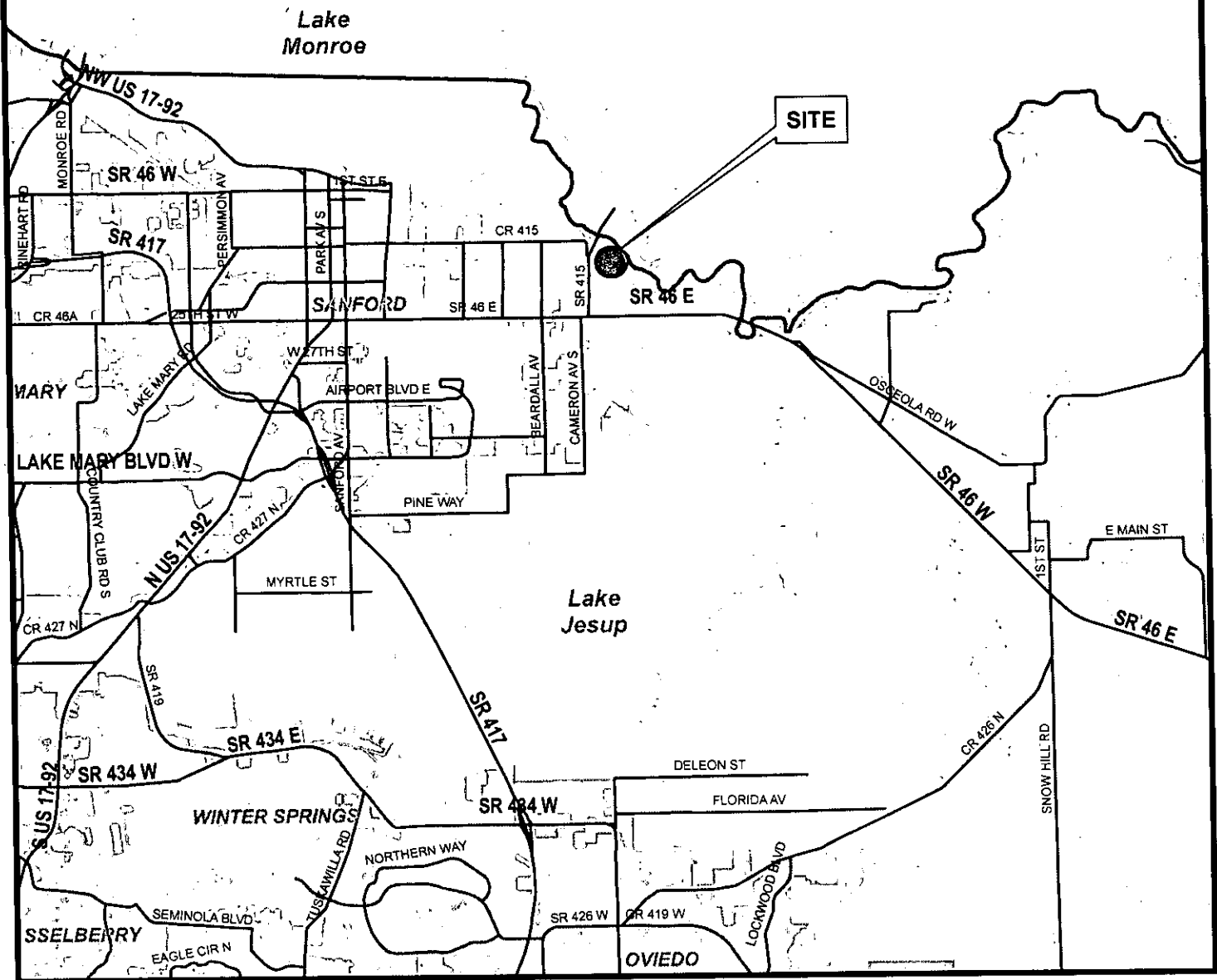
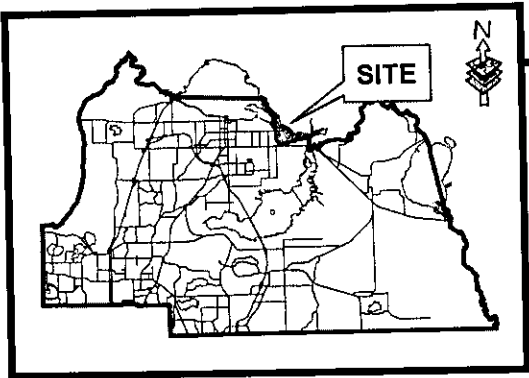
The applicant, G&D Constructors (for Rolf Bergmann, owner), is requesting approval for the construction of a 14,425 square foot dock at 2521 S.R. 415. The structure includes a 375 square foot deck and a 675 linear foot access boardwalk over 0.26 acres of wetlands. Sections 70.4 and 70.5(b) (7) of the Seminole County Land Development Code require Board approval for boat docks exceeding 1,000 square feet. Although the terminal deck is average size for the area, the majority of the structure involves the access boardwalk. The length of the boardwalk is necessary to reach a navigable depth. St. John River Water Management issued a permit for this structure on October 27, 2003.

STAFF RECOMMENDATION:

Staff recommends approval of the construction of the dock and boardwalk structure consisting of 14,425 square feet for the Bergmann residence located at 2521 SR 415 in Sanford based on the plans as submitted.

- Attachments:
1. Location Map
 2. Dock Plan

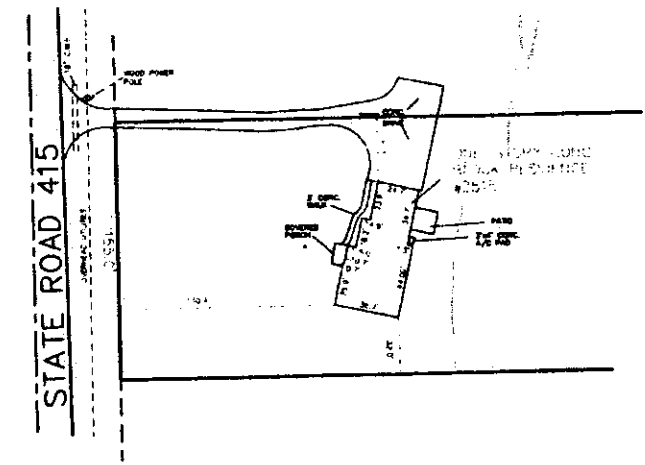
Reviewed by: <u>KR</u> Co Atty: <u>KR</u> DFS: _____ Other: _____ DCM: _____ CM: _____ File No. <u>ph130pdd01</u>
--



RECORD SURVEY
 FOR
BIRGATTE E. BERGMANN
 SECTION 34, TOWNSHIP 19 SOUTH, RANGE 31 EAST
 SEMINOLE COUNTY, FLORIDA



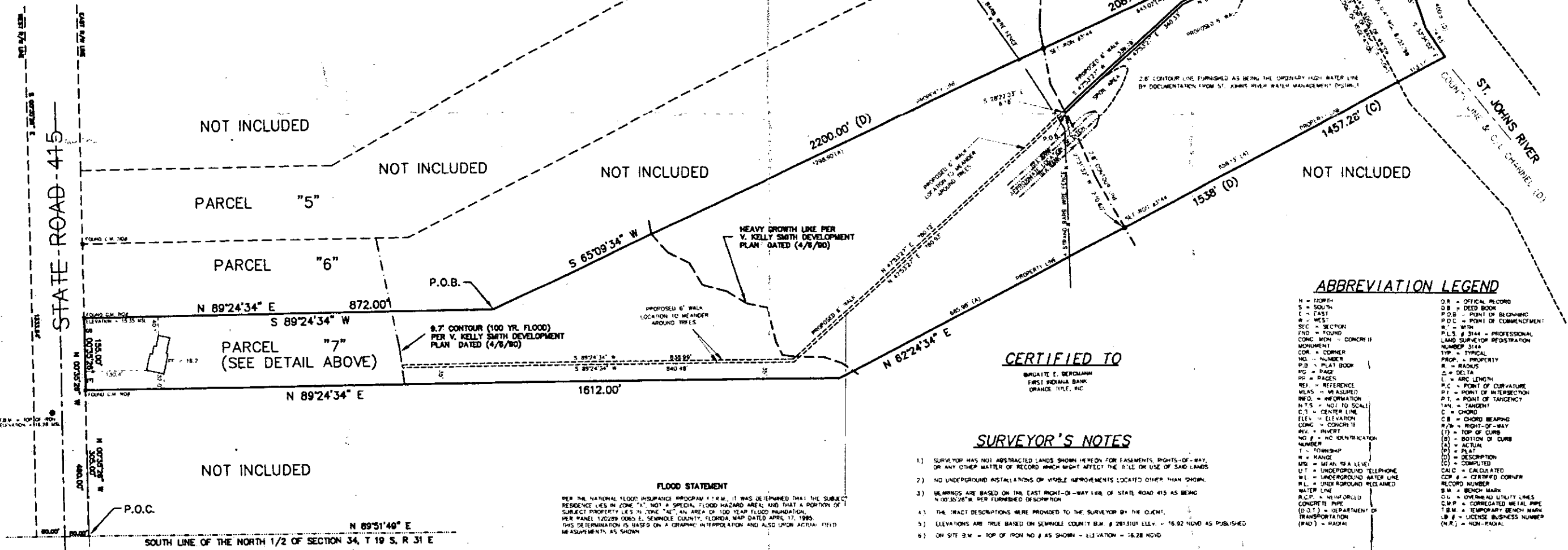
DETAIL
SCALE: 1" = 50'



FURNISHED DESCRIPTION

SUBJECT TRACT (PARCEL 7):

FROM THE INTERSECTION OF THE SOUTH LINE OF THE NORTH 1/2 OF SECTION 34, TOWNSHIP 19 SOUTH, RANGE 31 EAST, SEMINOLE COUNTY, FLORIDA, AND THE EAST RIGHT-OF-WAY LINE OF STATE ROAD 415, BEGIN AT POINT A, BEARING S 89°24'34" W, DISTANCE 1612.00 FEET TO POINT B. FROM POINT B, BEARING S 89°24'34" W, DISTANCE 872.00 FEET TO POINT C. FROM POINT C, BEARING N 89°24'34" E, DISTANCE 1612.00 FEET TO POINT D. FROM POINT D, BEARING N 89°24'34" E, DISTANCE 1612.00 FEET TO POINT E. FROM POINT E, BEARING S 89°24'34" W, DISTANCE 872.00 FEET TO POINT F. FROM POINT F, BEARING S 89°24'34" W, DISTANCE 872.00 FEET TO POINT G. FROM POINT G, BEARING N 89°24'34" E, DISTANCE 1612.00 FEET TO POINT H. FROM POINT H, BEARING S 89°24'34" W, DISTANCE 872.00 FEET TO POINT I. FROM POINT I, BEARING N 89°24'34" E, DISTANCE 1612.00 FEET TO POINT J. FROM POINT J, BEARING S 89°24'34" W, DISTANCE 872.00 FEET TO POINT K. FROM POINT K, BEARING N 89°24'34" E, DISTANCE 1612.00 FEET TO POINT L. FROM POINT L, BEARING S 89°24'34" W, DISTANCE 872.00 FEET TO POINT M. FROM POINT M, BEARING N 89°24'34" E, DISTANCE 1612.00 FEET TO POINT N. FROM POINT N, BEARING S 89°24'34" W, DISTANCE 872.00 FEET TO POINT O. FROM POINT O, BEARING N 89°24'34" E, DISTANCE 1612.00 FEET TO POINT P. FROM POINT P, BEARING S 89°24'34" W, DISTANCE 872.00 FEET TO POINT Q. FROM POINT Q, BEARING N 89°24'34" E, DISTANCE 1612.00 FEET TO POINT R. FROM POINT R, BEARING S 89°24'34" W, DISTANCE 872.00 FEET TO POINT S. FROM POINT S, BEARING N 89°24'34" E, DISTANCE 1612.00 FEET TO POINT T. FROM POINT T, BEARING S 89°24'34" W, DISTANCE 872.00 FEET TO POINT U. FROM POINT U, BEARING N 89°24'34" E, DISTANCE 1612.00 FEET TO POINT V. FROM POINT V, BEARING S 89°24'34" W, DISTANCE 872.00 FEET TO POINT W. FROM POINT W, BEARING N 89°24'34" E, DISTANCE 1612.00 FEET TO POINT X. FROM POINT X, BEARING S 89°24'34" W, DISTANCE 872.00 FEET TO POINT Y. FROM POINT Y, BEARING N 89°24'34" E, DISTANCE 1612.00 FEET TO POINT Z. FROM POINT Z, BEARING S 89°24'34" W, DISTANCE 872.00 FEET TO POINT A.



ABBREVIATION LEGEND

- N = NORTH
- S = SOUTH
- E = EAST
- W = WEST
- SEC = SECTION
- FOUND = FOUND
- CONC MON = CONCRETE MONUMENT
- CO = CORNER
- NO. = NUMBER
- P.B. = PLAT BOOK
- PG = PAGE
- PP = PAGES
- REF = REFERENCE
- MEAS = MEASURED
- NEED = INFORMATION
- N.T.S. = NOT TO SCALE
- C.L. = CENTER LINE
- ELEV. = ELEVATION
- CONC = CONCRETE
- NO. # = NO. IDENTIFICATION NUMBER
- T = TOWNSHIP
- R = RANGE
- MSL = MEAN SEA LEVEL
- UT = UNDERGROUND TELEPHONE
- UL = UNDERGROUND WATER LINE
- R.L. = UNDERGROUND RECLAIMED WATER LINE
- R.C.P. = REINFORCED CONCRETE PIPE
- (D.T.) = DEPARTMENT OF TRANSPORTATION
- (RAD) = RADIAL
- O.R. = OPTICAL RECORD
- D.B. = DEED BOOK
- P.O.B. = POINT OF BEGINNING
- P.O.C. = POINT OF COMMENCEMENT
- W.P. = WITH
- PL # 3444 = PROFESSIONAL LAND SURVEYOR REGISTRATION NUMBER 3444
- TYP = TYPICAL
- PROP. = PROPERTY
- R. = RADII
- Δ = DELTA
- L = ARC LENGTH
- P.C. = POINT OF CURVATURE
- P.I. = POINT OF INTERSECTION
- P.T. = POINT OF TANGENCY
- TAN. = TANGENT
- C = CHORD
- C.B. = CHORD BEARING
- R/W = RIGHT-OF-WAY
- (T) = TOP OF CURB
- (B) = BOTTOM OF CURB
- (A) = ACTUAL
- (D) = DISTANCE
- (C) = COMPUTED
- CALC. = CALCULATED
- CONC. = CONCRETE CORNER
- REC. NO. = RECORD NUMBER
- B.M. = BENCHMARK
- O.U. = OVERHEAD UTILITY LINES
- C.M.P. = CORRUGATED METAL PIPE
- T.B.M. = TEMPORARY BENCH MARK
- L.B. = LICENSE BUSINESS NUMBER
- (N.R.) = NON-RADIAL

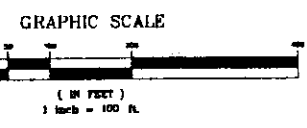
CERTIFIED TO
 BIRGATTE E. BERGMANN
 FIRST INDIANA BANK
 ORANGE, FLA., INC.

SURVEYOR'S NOTES

- SURVEYOR HAS NOT ABSTRACTED LANDS SHOWN HEREON FOR EASEMENTS, RIGHTS-OF-WAY, OR ANY OTHER MATTER OF RECORD WHICH MIGHT AFFECT THE TITLE OR USE OF SAID LANDS.
- NO UNDERGROUND INSTALLATIONS OF VISIBLE IMPROVEMENTS LOCATED OTHER THAN SHOWN.
- BEARINGS ARE BASED ON THE EAST RIGHT-OF-WAY LINE OF STATE ROAD 415 AS BEING 100.00 FEET PER FURNISHED DESCRIPTION.
- THE TRACT DESCRIPTIONS WERE PROVIDED TO THE SURVEYOR BY THE CLIENTS.
- ELEVATIONS ARE TRUE BASED ON SEMINOLE COUNTY B.M. # 2813011 ELEV. = 16.92 HVD AS PUBLISHED.
- ON SITE B.M. = TOP OF IRON NO. 8 AS SHOWN - ELEVATION = 16.28 HVD.

FLOOD STATEMENT

PER THE NATIONAL FLOOD INSURANCE PROGRAM (NFIP), IT WAS DETERMINED THAT THE SUBJECT RESIDENCE LIES IN ZONE "X", NOT A SPECIAL FLOOD HAZARD AREA, AND THAT A PORTION OF SUBJECT PROPERTY LIES IN THE "AC" AN AREA OF 100 YEAR FLOOD FLOODPLAIN. PER PANEL 1/0289 0083 E, SEMINOLE COUNTY, FLORIDA, MAP DATED APRIL 17, 1995. THIS DETERMINATION IS BASED ON A GRAPHIC INTERPOLATION AND ALSO UPON ACTUAL FIELD MEASUREMENTS AS SHOWN.



THIS IS TO CERTIFY THAT THIS RECORD SURVEY, AS SHOWN HEREON, MEETS THE MINIMUM TECHNICAL STANDARDS AS SET FORTH BY THE FLORIDA BOARD OF PROFESSIONAL SURVEYORS AND MAPPERS IN CHAPTER 6107-8, FLORIDA ADMINISTRATIVE CODE, PURSUANT TO SECTION 472.027, FLORIDA STATUTES.

R. L. Roberts
 R. L. ROBERTS, P.S.M.
 FLORIDA REGISTRATION NUMBER 3444
 NOT VALID WITHOUT THE SIGNATURE AND THE ORIGINAL RAISED SEAL OF A FLORIDA LICENSED SURVEYOR AND MAPPER.

DATE	REVISION	REVISED BY	CHECKED BY
08/01/00	FINAL SURVEY		

ROBERTS
SURVEYING & MAPPING, INC.
 185 N. COUNTRY CLUB ROAD
 LAKE MARY, FLORIDA
 PH. (407) 322-2213 FAX 322-2232

COMPUTED BY: *R.L.R.* DRAWN BY: *R.L.R.* CHECKED BY: *S.R.B.* FIELD BY: *A.R.* DATE: *12/02/98*

RECORD SURVEY		PROJECT NUMBER 97-38
FOR		DATE 12/09/98
BIRGATTE E. BERGMANN		SCALE 1" = 100'
SEMINOLE COUNTY, FLORIDA		SHEET 1 OF 1