

Item #44

**SEMINOLE COUNTY GOVERNMENT  
AGENDA MEMORANDUM**

**SUBJECT:** Resolution – Florida National Scenic Trail (FNST) Bridge  
Submerged Land Lease

**DEPARTMENT:** Public Works      **DIVISION:** Engineering / Special Projects

**AUTHORIZED BY:** *W. Gary Johnson*      **CONTACT:** *David Martin*, P.E. EXT. 5610  
*W. Gary Johnson, P.E. Director*      *Jerry McCollum, P.E., County Engineer*      *ADK for IMC*

**Agenda Date:** 06-24-03    **Regular**     **Consent**     **Work Session**     **Briefing**   
**Public Hearing – 1:30**       **Public Hearing – 7:00**

**MOTION/RECOMENDATION:**

Adopt Resolution for the Florida National Scenic Trail (FNST) Bridge Submerged Land Lease from the Board of Trustees of the Internal Improvement Trust Fund of the State of Florida. The purpose of the lease is to reconstruct a trail bridge over the submerged lands of the Econlockhatchee River.

(District 1 - Commissioner Maloy & District 2 - Commissioner Morris)

**Attachments:** Resolution  
Exhibit

**Reviewed by:**  
**Co Atty:** *AK*  
**DFS:** \_\_\_\_\_  
**Other:** \_\_\_\_\_  
**DCM:** *AK*  
**CM:** *AK*  
**File No. CPWE 03**

RESOLUTION

THE FOLLOWING RESOLUTION WAS ADOPTED AT THE REGULAR MEETING OF THE BOARD OF COUNTY COMMISSIONERS OF SEMINOLE COUNTY, FLORIDA, ON THE \_\_\_\_\_ DAY OF \_\_\_\_\_, A.D., 2003.

WHEREAS, it has been determined by the Board of County Commissioners of Seminole County that a necessity exists, in conjunction with the County's Recreational Trail Program, to reconstruct a trail bridge across the Econlockhatchee River located in Section 8, Township 21 South, Range 32 East, in Seminole County, Florida: and

WHEREAS, the title is currently vested with the Board of County Commissioners of Seminole County, Florida, and

WHEREAS, the construction of the bridge across the Econlockhatchee River to serve the public requires a Submerged Land Lease from the Board of Trustees of the Internal Improvement Trust Fund of the State of Florida, and

WHEREAS, the Board of County Commissioners of Seminole County, Florida, support the Submerged Land Lease across the Econlockhatchee River, as shown on Exhibit A for the purpose of constructing bridge improvements.

NOW THEREFORE, BE IT RESOLVED that the Board of County Commissioners of Seminole County, Florida, support the Board of Trustees of the Internal Improvement Trust Fund of the State of Florida granting a Submerged Land Lease as shown on Exhibit A for the purpose of constructing bridge improvements.

ADOPTED THIS \_\_\_\_\_ DAY OF \_\_\_\_\_ A. D., 2003.


ATTEST:

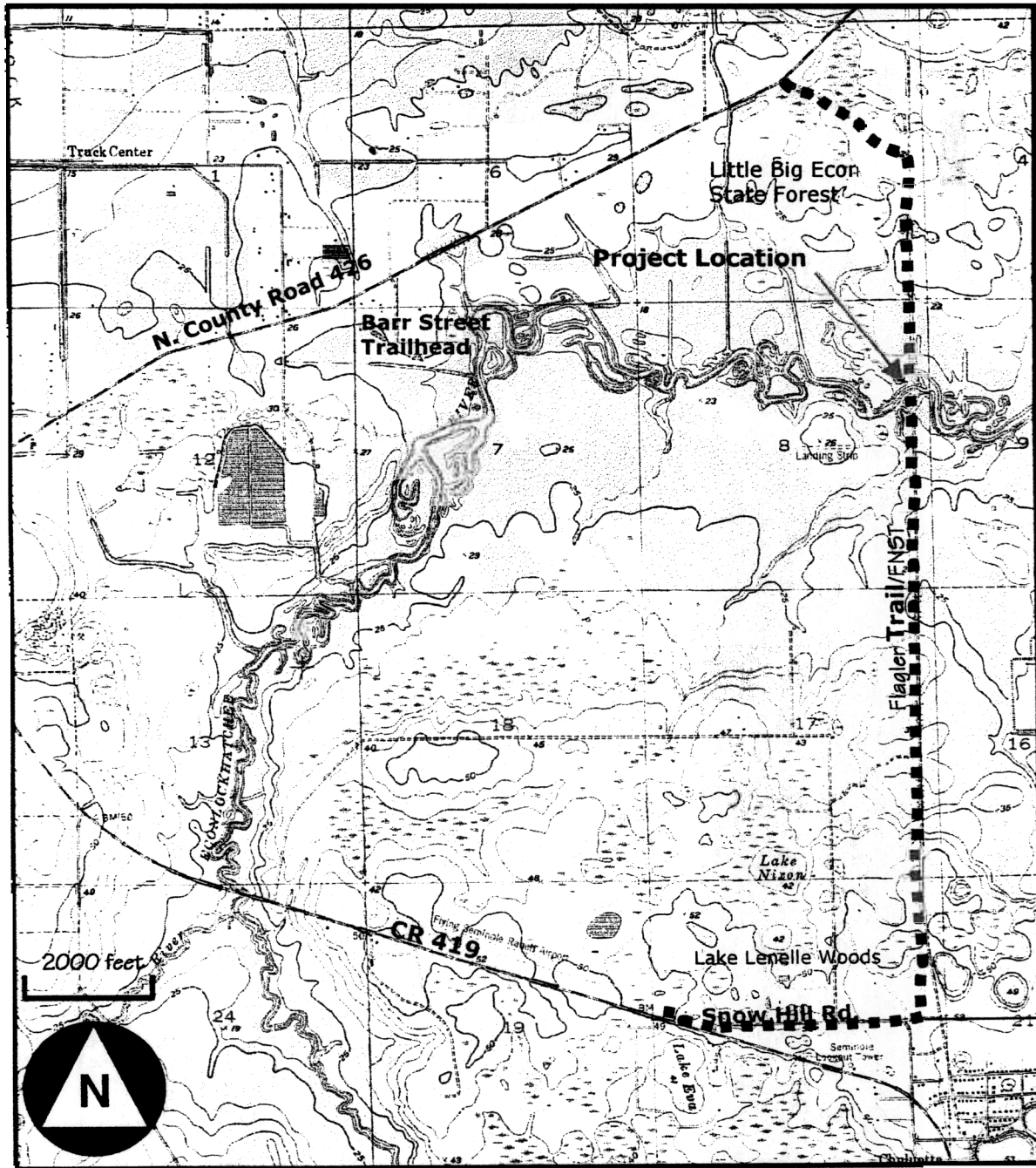
BOARD OF COUNTY COMMISSIONERS  
SEMINOLE COUNTY

\_\_\_\_\_  
MARYANNE MORSE, Clerk to the Board of County Commissioners in and for Seminole County, Florida.

\_\_\_\_\_  
DARYL G. McLAIN, Chairman

Approved as to Legality, Form and Sufficiency for Seminole County, Florida

  
Assistant County Attorney  
Herb Zischkau



## Flagler Trail Bridge Access and Directions

**Directions to Southern Access:** CR 419 to Snow Hill Road, heading east 1 mile, then north on Lake Lenelle Road to a curve in the road. A locked gate is to the right and Flagler Trail extends north 2 miles. Contact David Martin at 407-665-5610 for vehicular access.

**Directions to Northern Access:** North County Road 426 to a dirt road entrance past the Barr Street Trailhead on the right. There is a locked gate. Follow the dirt road to Flagler Trail and head south (total 1.2 miles). For vehicular access, contact David Martin at 407-665-5610 and notify the Division of Forestry at 407-971-3500.

EXHIBIT "A"