

SEMINOLE COUNTY GOVERNMENT
AGENDA MEMORANDUM

SUBJECT: Markham Forest Plat

DEPARTMENT: Planning & Development DIVISION: Development Review

AUTHORIZED BY: Donald S. Fisher CONTACT: Ian Ratliff EXT. 7438

Agenda Date 5/27/03 Regular Consent Work Session Briefing
Public Hearing – 1:30 Public Hearing – 7:00

MOTION/RECOMMENDATION:

Approve the plat for Markham Forest;

Located at the southeast corner of SR 46 and Longwood Markham Road in Section 27, Township 19, Range 29 in the Sanford area.

District 5-McLain (Ian Ratliff, Principal Planner) *ter*

BACKGROUND:

Ryland Homes is requesting approval of the 42 lot single family Markham Forest plat. Roads within the subdivision will be privately owned and maintained and utilities will be provided by Seminole County. The property is governed by the Markham Preserve PUD, the SR 46 Scenic Corridor Overlay and the Longwood Markham Scenic Road Overlay and has complied with all the applicable requirements. Staff has also found the subdivision to be in compliance with the Land Development Code and Ch. 177 platting requirements.

STAFF RECOMMENDATION:

Staff recommends approval of the Markham Forest plat.

District: 5-McLain
Attachments: Exhibit A: Plat Reduction
Exhibit B: Location map

Reviewed by:
Co Atty: *irc*
DFS: _____
Other: *[Signature]*
DCM: *[Signature]*
CM: *[Signature]*
File No. cpdd01

NOTICE

THIS PLAT, AS RECORDED IN ITS GRAPHIC FORM IS THE OFFICIAL DEPICTION OF THE SUBDIVIDED LANDS DESCRIBED HEREIN AND WILL, IN NO CIRCUMSTANCES, BE REPLACED IN AUTHORITY BY ANY OTHER GRANT OR INSTRUMENT FORM OF THE PLAT.

THERE MAY BE ADDITIONAL DESCRIPTIONS THAT ARE NOT RECORDED ON THIS PLAT THAT MAY BE FOUND IN THE PUBLIC RECORDS OF THIS COUNTY.

MARKHAM FOREST
SECTION 27, TOWNSHIP 19 SOUTH, RANGE 29 EAST,
A PORTION OF THE PETER MIRANDA GRANT
SEMINOLE COUNTY, FLORIDA

MARKHAM FOREST DEDICATION

This is to certify that the undersigned, Bowyer-Singleton, Inc., the developer referred to as "Developer" in the useful portion of the deed described in the petition has and that it has caused the roads described herein to be surveyed and this plat, entitled "MARKHAM FOREST", to be duly recorded in its true and correct form and valid form, all of the streets and easements shown on this plat are not required for public use and such streets and easements are not and will not be a part of the County system of public roads, unless otherwise noted. Provided however, the utility easements shown herein do not constitute non-exclusive easements, and all easements shown hereon are subject to all of the rights, powers and access appertaining to and under all of the private streets shown hereon or hereafter dedicated to Seminole County, Florida, however, dedication of said easements shall not be deemed to create an obligation upon Seminole County to perform construction or maintenance within such dedicated easements, and said streets and easements shall remain private and the title and exclusive property of the landowner, and it does hereby grant to the present and future owners of adjacent lands, their heirs, assigns and executors, heirs, and to utilities, public and private the easements, rights and appurtenances of utility, gas and other utilities authorized by the landowner. In case the right shown on this plat, hereafter referred to as such roads and easements shall, hereafter, be the lawful owner from time to time and hereafter, the non-exclusive and permanent right of ingress and egress over and across said streets and easements. Notwithstanding the foregoing provisions, the Developer reserves the right to construct and operate right to deny the right of ingress to the person who, in the opinion of the landowner, may create a

participation in a dedication of public roads and easements shown on this plat, that it is a valid dedication, made by the Developer, in accordance with the provisions contained in the petition, filed and recorded in the public records of Seminole County, Florida, to the effect that the said roads and easements are dedicated to the public use of the people of Seminole County, Florida. The dedication of the roads and easements shown on this plat is to the public use of the people of Seminole County, Florida, and it is hereby declared to be a valid dedication. In WITNESS WHEREOF, Bowyer-Singleton, Inc., has caused this plat to be signed and sealed to and recorded in the public records of Seminole County, Florida, this 1st day of October, 2004.

I, _____, Notary Public for the State of Florida, do hereby certify that the above is a true and correct copy of the said plat as it appears in the public records of Seminole County, Florida.

LEGAL DESCRIPTION

A PORTION OF THE PETER MIRANDA GRANT AND A PORTION OF THE NORTHWEST 1/4 OF SECTION 27, TOWNSHIP 19 SOUTH, RANGE 29 EAST, SEMINOLE COUNTY, FLORIDA, BEING MORE PARTICULARLY DESCRIBED AS FOLLOWS:

COMMENCING AT THE NORTHWEST CORNER OF THE NORTHWEST 1/4 OF SECTION 27, TOWNSHIP 19 SOUTH, RANGE 29 EAST, SEMINOLE COUNTY, FLORIDA, RUN S89°41'00"E, A DISTANCE OF 1322.13 FEET TO THE NORTHWEST CORNER OF THE NORTHWEST 1/4 OF THE NORTHWEST 1/4 OF SECTION 27; THENCE S00°12'53"W, ALONG THE WEST LINE OF SAID NORTHWEST 1/4 OF THE NORTHWEST 1/4, A DISTANCE OF 132.95 FEET; THENCE DEPARTING SAID WEST LINE, RUN S89°47'02"E, A DISTANCE OF 25.00 FEET TO THE INTERSECTION OF THE EAST RIGHT-OF-WAY LINE OF LONGWOOD MARKHAM ROAD, AS RECORDED IN PLAT BOOK 6, PAGE 41, PUBLIC RECORDS OF SEMINOLE COUNTY, FLORIDA AND THE SOUTH RIGHT-OF-WAY LINE OF STATE ROAD 46, PER STATE OF FLORIDA STATE ROAD DEPARTMENT RIGHT-OF-WAY MAP SECTION 77030-2505, SAID POINT ALSO BEING THE POINT OF BEGINNING; THENCE S89°42'03"E, ALONG THE SOUTH RIGHT-OF-WAY LINE OF SAID STATE ROAD 46, A DISTANCE OF 1291.12 FEET TO A POINT ON THE EAST LINE OF THE NORTHWEST 1/4 OF SAID SECTION 27 AND THE WEST LINE OF ROSS LAKE SHORES, AS RECORDED IN PLAT BOOK 25, PAGE 67, PUBLIC RECORDS OF SEMINOLE COUNTY, FLORIDA; THENCE DEPARTING SAID RIGHT OF WAY LINE, RUN S00°12'52"W, ALONG SAID WEST LINE, A DISTANCE OF 1194.45 FEET; THENCE DEPARTING SAID EAST AND WEST LINES, RUN N00°41'49"W, A DISTANCE OF 300.00 FEET; THENCE S30°53'49"E, A DISTANCE OF 385.80 FEET; THENCE S89°41'49"E, A DISTANCE OF 100.65 FEET; THENCE S00°12'52"W, A DISTANCE OF 323.45 FEET; THENCE N89°42'14"W, A DISTANCE OF 165.27 FEET; THENCE N00°12'52"E, A DISTANCE OF 165.87 FEET; THENCE N89°42'08"W, A DISTANCE OF 296.73 FEET; THENCE N00°12'52"E, A DISTANCE OF 165.88 FEET; THENCE N89°42'02"W, A DISTANCE OF 835.13 FEET TO A POINT ON THE EAST RIGHT-OF-WAY LINE OF THE AFOREMENTIONED LONGWOOD MARKHAM ROAD; THENCE N00°12'53"E, ALONG SAID RIGHT-OF-WAY LINE, A DISTANCE OF 1526.68 FEET TO THE POINT OF BEGINNING.

CONTAINING 46.314 ACRES, MORE OR LESS.

STATE OF FLORIDA COUNTY OF SEMINOLE

I, _____, Notary Public for the State of Florida, do hereby certify that the above is a true and correct copy of the said plat as it appears in the public records of Seminole County, Florida.

Notary Public

CERTIFICATE OF SURVEYOR

I, _____, Surveyor, do hereby certify that this plat is a correct representation of the lands described herein and that the said plat was prepared under the direction and supervision of the Surveyor and that it complies with all of the surveying requirements as required by Chapter 173, Florida Statutes, and that said lands are located in Seminole County, Florida.

Signature: _____ Date: _____
SHEILA V. BELLET Surveyor Number: 1972

Bowyer-Singleton & Associates, Inc.
520 South Magnolia Avenue
Orlando, Florida 32801
Certification of Authority No. 19222

CERTIFICATE OF APPROVAL OF COUNTY COMMISSIONERS

THIS IS TO CERTIFY that on _____ the foregoing plat was approved by the Board of County Commissioners of Seminole County, Florida.

_____ Chairman of the Board

Affected: _____ Clerk of the Board Date: _____

COUNTY SURVEYOR

I HAVE REVIEWED THIS PLAT AND FIND IT TO BE IN CONFORMITY WITH CHAPTER 173, FLORIDA STATUTES.

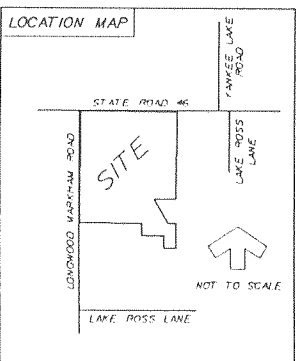
STEVE L. WELLES, P.E.
FLORIDA REGISTRATION NUMBER 4888
COUNTY SURVEYOR FOR SEMINOLE COUNTY, FLORIDA

CERTIFICATE OF APPROVAL CLERK OF THE CIRCUIT COURT

I HEREBY CERTIFY that I have examined the foregoing plat and find that it complies with the requirements of Chapter 173, Florida Statutes, and was filed for record on _____ File No. _____

_____ Clerk of the Circuit Court
In and For Seminole County, Florida

BY _____ P.C.



BOWYER-SINGLETON & ASSOCIATES, INCORPORATED

ENGINEERING • PLANNING • SURVEYING • ENVIRONMENTAL

520 SOUTH MAGNOLIA AVENUE ORLANDO, FLORIDA 32801
407-843-5120 • FAX 407-649-8664
CERTIFICATE OF AUTHORIZATION NO. LB 1221

EXHIBIT A

ASSOCIATED PLAT ENGIN

MARKHAM FOREST

SECTION 27, TOWNSHIP 19 SOUTH, RANGE 29 EAST,

A PORTION OF THE PETER MIRANDA GRANT

SEMINOLE COUNTY, FLORIDA

SHEET 2 OF 6

PLAT
BOOK

PAGE

BOWYER-SINGLETON
& ASSOCIATES, INCORPORATED

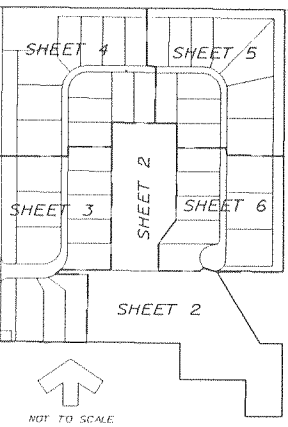
ENGINEERING • PLANNING • SURVEYING • ENVIRONMENTAL
520 SOUTH MAGNOLIA AVENUE • ORLANDO, FLORIDA 32801
407.843.5100 • FAX 407.843.9884
CERTIFICATE OF AUTHORIZATION NO. 181221

NOTICE

THIS PLAT, AS RECORDED IN ITS GRAPHIC FORM, IS THE OFFICIAL DEPICTION OF THE SUBDIVIDED LANDS DESCRIBED HEREIN AND WILL, IN NO CIRCUMSTANCES, BE SUPPLANTED IN AUTHORITY BY ANY OTHER GRAPHIC OR DIGITAL FORM OF THE PLAT.

THERE MAY BE ADDITIONAL RESTRICTIONS THAT ARE NOT RECORDED ON THIS PLAT THAT MAY BE FOUND IN THE PUBLIC RECORDS OF THIS COUNTY.

KEY MAP



NOT TO SCALE

NOTES

- BEARING STRUCTURE BASED ON THE NORTH LINE OF THE NORTHWEST 1/4 OF SECTION 27-19-29, BEING $S89^{\circ}41'00''E$, (ASSUMED).
- ALL PLATTED UTILITY EASEMENTS, EXCLUSIVE OF PRIVATE EASEMENTS GRANTED TO OR OBTAINED BY A PARTICULAR ELECTRIC, TELEPHONE, GAS OR OTHER PUBLIC UTILITY, SHALL ALSO BE EASEMENTS FOR THE CONSTRUCTION, INSTALLATION, MAINTENANCE, AND OPERATION OF CABLE TELEVISION SERVICES; PROVIDED, HOWEVER, NO SUCH CONSTRUCTION, INSTALLATION, MAINTENANCE, AND OPERATION OF CABLE TELEVISION SERVICES SHALL INTERFERE WITH THE FACILITIES AND SERVICES OF AN ELECTRIC, TELEPHONE, GAS OR OTHER PUBLIC UTILITY. IN THE EVENT A CABLE TELEVISION COMPANY DAMAGES THE FACILITIES OF A PUBLIC UTILITY, IT SHALL BE SOLELY RESPONSIBLE FOR THE DAMAGES PURSUANT TO SECTION 177.09112(8), FLORIDA STATUTES. SUCH CONSTRUCTION, INSTALLATION, MAINTENANCE AND OPERATION SHALL COMPLY WITH THE NATIONAL ELECTRICAL SAFETY CODE AS ADOPTED BY THE FLORIDA PUBLIC SERVICE COMMISSION.
- TRACT A IS ADDITIONAL RIGHT-OF-WAY FOR LONGWOOD MARKHAM ROAD, DEDICATED PER THIS PLAT.
- TRACT H IS A PRIVATE ROADWAY DEDICATED TO AND MAINTAINED BY THE HOMEOWNERS' ASSOCIATIONS.
- TRACTS B, D, AND E ARE RETENTION TRACTS DEDICATED TO AND MAINTAINED BY THE HOMEOWNERS' ASSOCIATION.
- TRACTS C, F, AND J ARE LANDSCAPE BUFFER TRACTS DEDICATED TO AND MAINTAINED BY THE HOMEOWNERS' ASSOCIATION.
- TRACT G IS A LIFT STATION TRACT DEDICATED IN FEE SIMPLE TO SEMINOLE COUNTY.
- THE GPS COORDINATES LISTED ON THIS PLAT DO NOT REFLECT THE SURFACE MEASUREMENTS SHOWN. (SEE SHEET 3 OF 6).
- THE CONSERVATION EASEMENT AS SHOWN ON THE FACE OF THE PLAT AND RECORDED IN OFFICIAL RECORDS BOOK 4665, PAGE 488, PUBLIC RECORDS OF SEMINOLE COUNTY, FLORIDA IS DEDICATED TO SEMINOLE COUNTY. (SEE DEDICATION).

PLAT LEGEND

C - CURVE	POC - POINT ON CURVE
CCR - CERTIFIED CORNER RECORD	PRC - POINT OF REVERSE CURVATURE
CM - CONCRETE MONUMENT	PRM - PERMANENT REFERENCE MONUMENT
CR - CORNER	PSM - PROFESSIONAL SURVEYOR MAPPER
DELTA - CENTRAL ANGLE	PT - POINT OF TANGENCY
DRN - DRAINAGE	RD - RADIAL
ESMT - EASEMENT	REC - RECOVERED
ID - IDENTIFICATION	R/W - RIGHT-OF-WAY
IP - IRON PIPE	SEC - SECTION
LB - LICENSED BUSINESS	TB - TANGENT BEARING
N/D - NAIL AND DISH	TY - TYPICAL
NR - NOW RADIAL	UB - LINE BREAK
OR - OFFICIAL RECORDS BOOK	UTL - UTILITY
PB - PLAT BOOK	TL - TOTAL LINE DIMENSION
PC - POINT OF CURVATURE	CH - CHANGE IN DIRECTION
PRC - POINT OF REVERSE CURVATURE	DB - DENOTES P.R.M. 14" x 14" CUI LB #1221, UNLESS OTHERWISE NOTED
PCP - PERMANENT CONTROL POINT	DC - DENOTES P.C.P. LB #1221, UNLESS OTHERWISE NOTED
PD - PLANNED DEVELOPMENT	RA - RANGE
PG - PAGE	UNLESS OTHERWISE NOTED

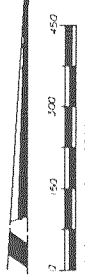
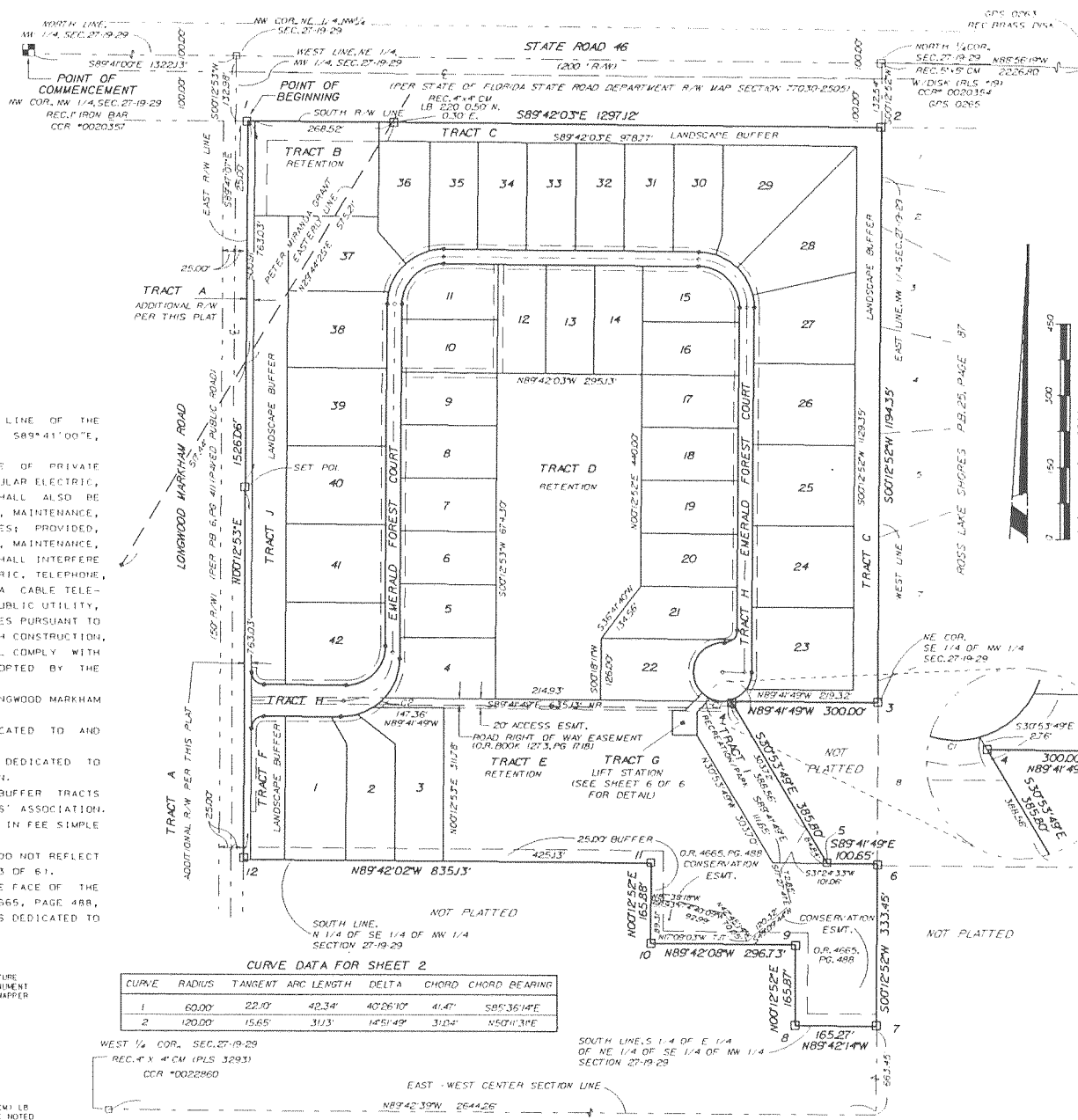
CURVE DATA FOR SHEET 2

CURVE	RADIUS	TANGENT	ARC LENGTH	DELTA	CHORD	CHORD BEARING
1	60.00'	22.87'	42.34'	40°26'10"	41.41'	S85°36'14"E
2	120.00'	15.65'	31.13'	14°51'49"	31.04'	N50°W 3.06'

WEST 1/4 COR., SEC. 27-19-29
REC. P.M. 4" CM (PLS 3293)
CCR *0022860

SOUTH LINE S 1/4 OF E 1/4 OF NE 1/4 OF SE 1/4 OF NW 1/4 SECTION 27-19-29

EAST - WEST CENTER SECTION LINE



MARKHAM FOREST

SECTION 27, TOWNSHIP 19 SOUTH, RANGE 29 EAST

A PORTION OF THE PETER MIRANDA GRANT

SEMINOLE COUNTY, FLORIDA

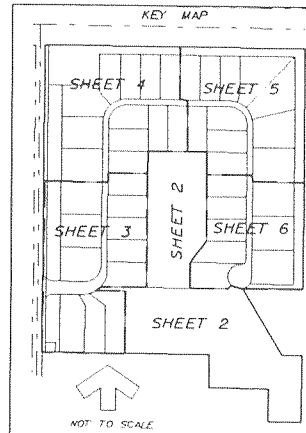
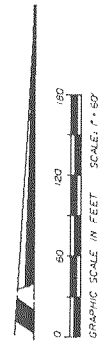
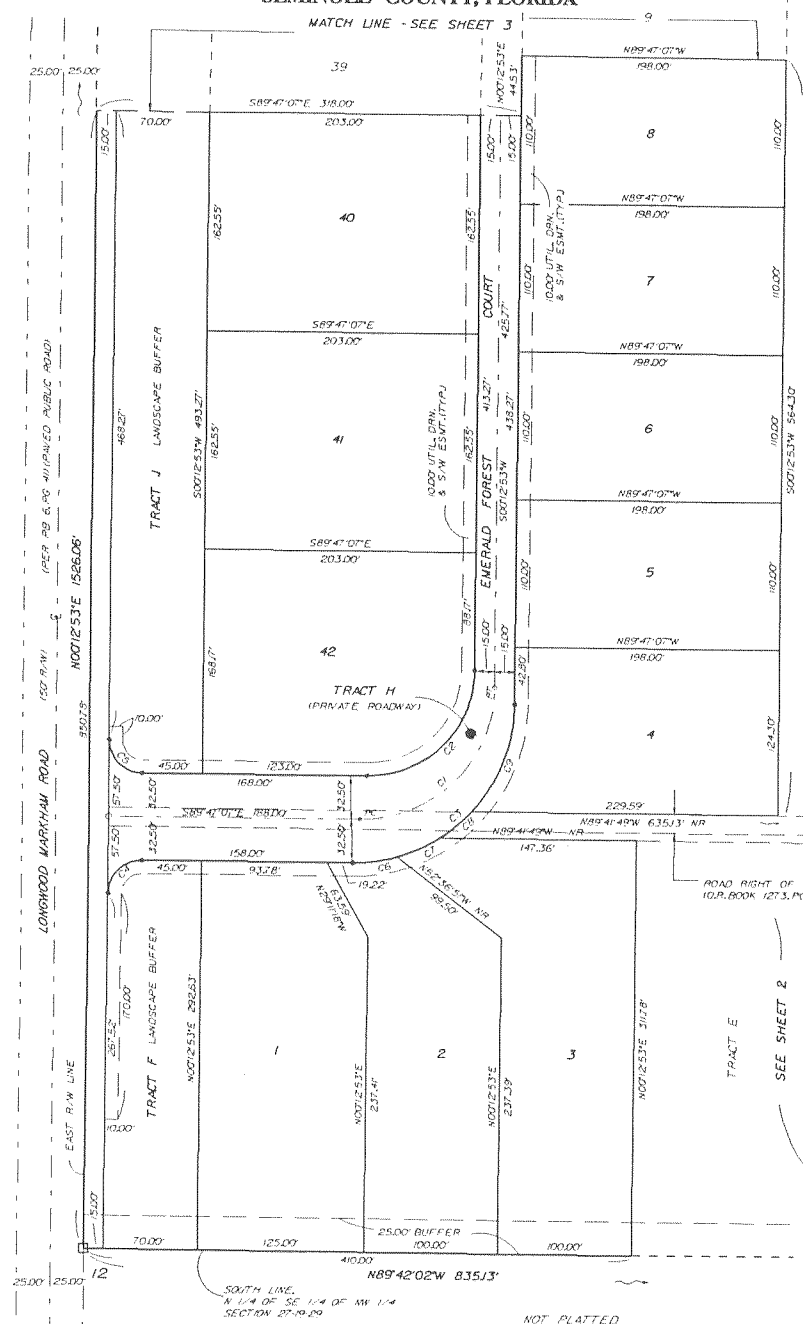
SHEET 3 OF 6

PLAT BOOK PAGE

NOTICE

THIS PLAT AS RECORDED IN ITS GRAPHIC FORM IS THE OFFICIAL DEPOSITION OF THE SURVAYED LANDS DESCRIBED HEREIN AND WILL IN NO CIRCUMSTANCES BE SUPPLANTED IN AUTHORITY BY ANY OTHER GRAPHIC OR DIGITAL FORM OF THE PLAT.

THERE MAY BE ADDITIONAL RESTRICTIONS THAT ARE NOT RECORDED ON THIS PLAT THAT MAY BE FOUND IN THE PUBLIC RECORDS OF THIS COUNTY.



CURVE DATA FOR SHEET 3

CURVE	RADIUS	TANGENT	ARC LENGTH	DELTA	CHORD	CHORD BEARING
1	100.00'	100.00'	157.08'	90°00'00"	141.42'	S45°12'53"W
2	80.00'	80.00'	125.66'	90°00'00"	113.14'	S45°12'53"W
3	120.00'	120.00'	188.50'	90°00'00"	169.71'	S45°12'53"W
4	25.00'	25.00'	39.27'	90°00'00"	35.36'	S45°12'53"W
5	25.00'	25.00'	39.27'	90°00'00"	35.36'	S44°47'01"E
6	120.00'	16.61'	33.33'	15°49'12"	33.03'	N24°01'01"E
7	120.00'	17.69'	35.33'	16°46'16"	35.00'	N66°00'33"E
8	120.00'	15.65'	33.33'	14°57'49"	31.04'	N50°11'31"E
9	120.00'	46.72'	89.11'	42°32'43"	67.07'	N27°29'15"E

- PLAT LEGEND**
- CURVE
 - CCR - CERTIFIED CORNER RECORD
 - CM - CONCRETE MONUMENT
 - CCR - CORNER
 - DELTA - CENTRAL ANGLE
 - DRW - DRAINAGE
 - EASMT - EASEMENT
 - ID - IDENTIFICATION
 - IF - IRON PIPE
 - LB - LICENSED BUSINESS
 - N/D - NAIL AND DISK
 - NR - NON RADIAL
 - OR - OFFICIAL RECORDS BOOK
 - PB - PLAT BOOK
 - PC - POINT OF CURVATURE
 - PCC - POINT OF COMPOUND CURVATURE
 - PCP - PERMANENT CONTROL POINT
 - PD - PLANNED DEVELOPMENT
 - PG - PAGE
 - POC - POINT ON CURVE
 - PRC - POINT OF REVERSE CURVATURE
 - PRW - PERMANENT REFERENCE MONUMENT
 - PSM - PROFESSIONAL SURVEYOR MAPPER
 - PT - POINT OF TANGENCY
 - RAD - RADIAL
 - REC - RECOVERED
 - R/W - RIGHT-OF-WAY
 - SEC - SECTION
 - S/W - SIDEWALK
 - TB - TANGENT BEARING
 - TYP - TYPICAL
 - UTL - UTILITY
 - LINE BREAK
 - TOTAL LINE DIMENSION
 - ▲ CHANGE IN DIRECTION
 - DENOTES P. R. M. 14" x 4" C.M.I. LB #1221, UNLESS OTHERWISE NOTED
 - DENOTES P. C. I. LB #1221, UNLESS OTHERWISE NOTED

SEE NOTE 7 (SHEET 2 OF 6)

GPS COORDINATES

1	1629034.56728	526284.70437	GPS 0263
2	1629027.79427	527581.75937	GPS 0263
3	1627833.50201	527577.28801	GPS 0263
4	1627835.08807	527277.30427	GPS 0263
5	1627504.04981	527475.40359	GPS 0263
6	1627503.51766	527576.05257	GPS 0263
7	1627170.08808	527574.80424	GPS 0263
8	1627170.94202	527409.54660	GPS 0263
9	1627336.80045	527410.16764	GPS 0263
10	1627338.34257	527113.44950	GPS 0263
11	1627504.20989	527114.07050	GPS 0263
12	1627508.57507	526278.98527	GPS 0263
	1629119.08300	529808.58400	GPS 0263
	1629160.32500	527582.24800	GPS 0263

BOWYER-SINGLETON & ASSOCIATES, INCORPORATED

SURVEYING • PLANNING • DEVELOPMENT • ENVIRONMENTAL

520 SOUTH MARKHAM AVENUE • ORLANDO, FLORIDA 32801

407-843-5120 • FAX: 407-849-8994

CERTIFICATE OF AUTHORIZATION NO. LR 1224

DATE PLOTTED: 03/14/23 11:43:33 AM PLOTTER: HP PLOTTER

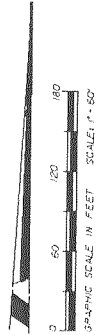
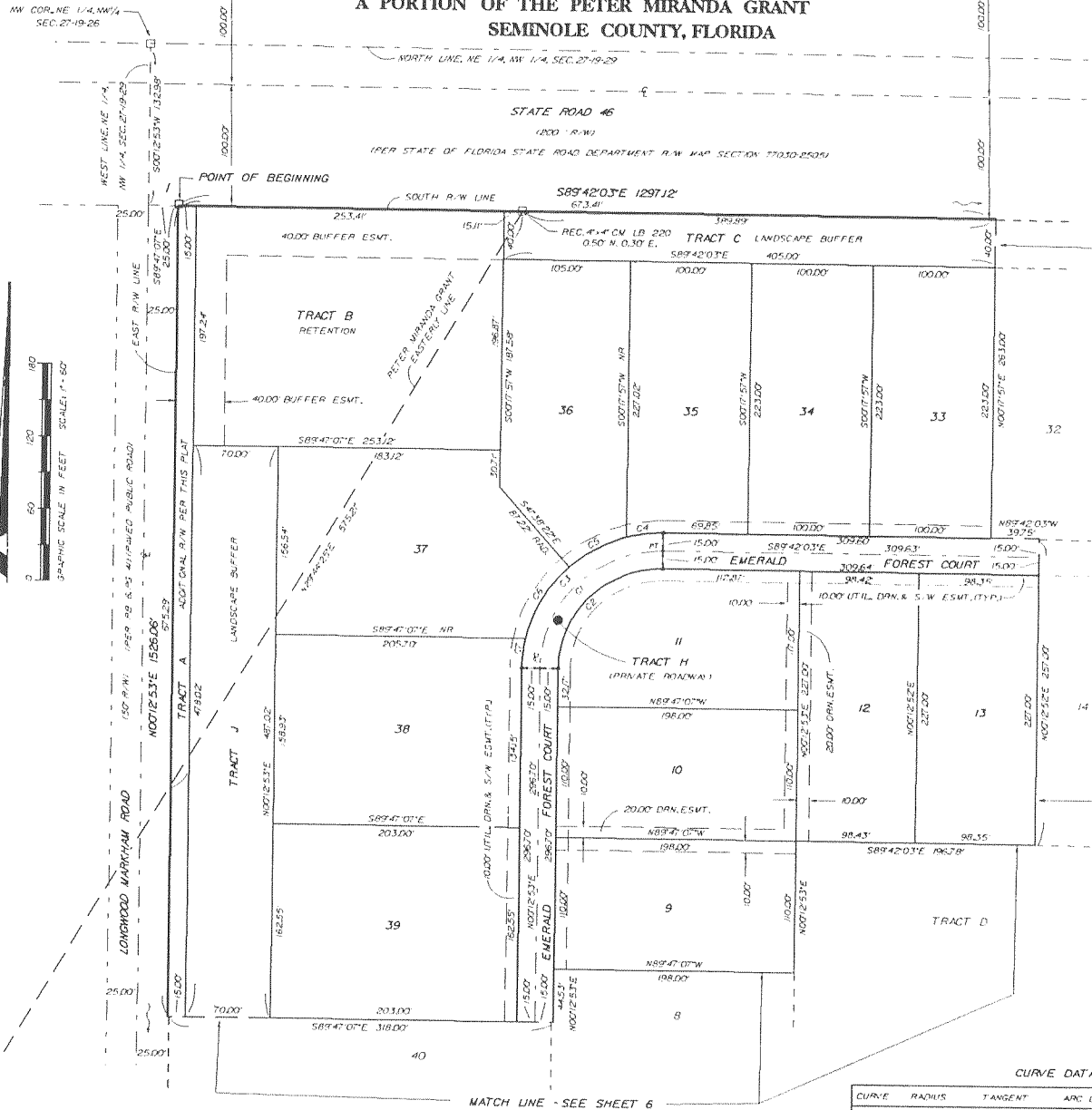
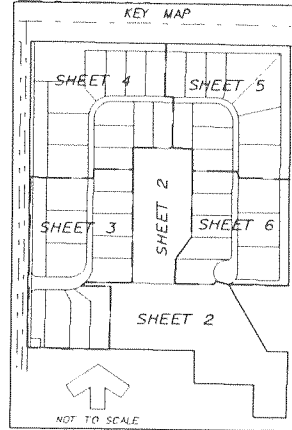
MARKHAM FOREST

SECTION 27, TOWNSHIP 19 SOUTH, RANGE 29 EAST
A PORTION OF THE PETER MIRANDA GRANT
SEMINOLE COUNTY, FLORIDA

SHEET 4 OF 6

PLAT BOOK PAGE

NOTICE
THIS PLAT AS RECORDED IN ITS ORIGINAL FORM IS THE OFFICIAL DOCUMENT OF THE SUBDIVISION. LANDS DESCRIBED HEREIN AND ALL RIGHTS THEREIN ARE CONVEYED BY ACT OF THE PUBLIC RECORDS OF THIS COUNTY.
THERE MAY BE ADDITIONAL RESTRICTIONS THAT ARE NOT RECORDED IN THIS PLAT THAT MAY BE FOUND IN THE PUBLIC RECORDS OF THIS COUNTY.



- PLAT LEGEND**
- C - CURVE
 - CCD - CURVED CED CONCRETE RECORD
 - CM - CONCRETE MENTMENT
 - CR - CORNER
 - CEA - CENTRAL ANGLE
 - DRN - DRAINAGE
 - EMF - EASEMENT
 - ID - IDENTIFICATION
 - IP - IRON PIPE
 - IB - IDENTIFIED BUSHINESS
 - N&B - NAIL AND BUSH
 - NR - NON PARTIAL
 - DR - DITCH
 - DRN - DRAINAGE
 - FB - PLAT BOOK
 - PC - POINT OF CURVATURE
 - PCP - POINT OF CENTER OF CURVATURE
 - PP - PERMANENT CONTROL POINT
 - PD - PLANNED DEVELOPMENT
 - PD - PAGE
 - POC - POINT ON CURVE
 - PRC - POINT OF REVERSE CURVATURE
 - PRM - PERMANENT REFERENCE MONUMENT
 - PRM - PERMANENT REFERENCE MONUMENT
 - PT - POINT OF TANGENCY
 - RAD - RADIAL
 - REC - RECORDED
 - R/W - RIGHT-OF-WAY
 - SEC - SECTION
 - S/W - SIDEWALK
 - TB - TANGENT BEARING
 - TYP - TYPICAL
 - UTIL - UTILITY
 - LB - LINE BREAK
 - TL - TOTAL LINE DIMENSION
 - CH - CHANGE IN DIRECTION
 - DB - DENOTES P.R.M. 14" x 4" CM L.B. #1221, PRESS DIMENSION NOTED
 - DB - DENOTES P.C.P. L.B. #1221, UNLESS OTHERWISE NOTED

CURVE DATA FOR SHEET 4

CURVE	RADIUS	TANGENT	ARC LENGTH	DELTA	CHORD	CHORD BEARING
1	100.00	100.15	157.23	90°05'04"	141.53	N45°15'25"E
2	85.00	85.13	133.64	90°05'04"	120.30	N45°15'25"E
3	115.00	115.17	180.81	90°05'04"	162.75	N45°15'25"E
4	115.00	115.34	30.50	15°11'52"	30.47	N62°42'01"E
5	115.00	27.33	53.67	28°44'27"	53.69	N67°43'51"E
6	115.00	37.03	71.65	35°41'58"	70.50	N30°30'39"E
7	115.00	12.54	24.98	12°26'47"	24.93	N06°26'16"E

BOWYER-SINGLETON & ASSOCIATES, INCORPORATED
ENGINEERING • PLANNING • SURVEYING • ENVIRONMENTAL
520 SOUTH MAGNOLIA AVENUE • ORLANDO, FLORIDA 32801
407-843-5120 • FAX 407-843-8664
CERTIFICATE OF AUTHORIZATION NO. LB 1921

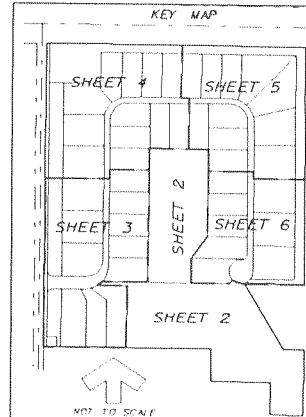
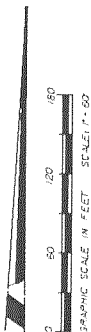
NOTICE
 THIS PLAN, AS PREPARED IN ITS GRAPHIC FORM IS THE OFFICIAL RECORD OF THE SUBDIVISION LANDS DESCRIBED HEREIN AND WILL BE VALID UNLESS IT IS SUPERSEDED IN WHOLE OR IN PART BY ANY OTHER GRAPHIC OR DIGITAL FORM OF THE PLAN.
 THERE MAY BE ADDITIONAL RESTRICTIONS THAT ARE NOT RECORDED ON THIS PLAN THAT MAY BE FOUND IN THE PUBLIC RECORDS OF THIS COUNTY.

MARKHAM FOREST

SECTION 27, TOWNSHIP 19 SOUTH, RANGE 29 EAST A PORTION OF THE PETER MIRANDA GRANT SEMINOLE COUNTY, FLORIDA

SHEET 5 OF 6

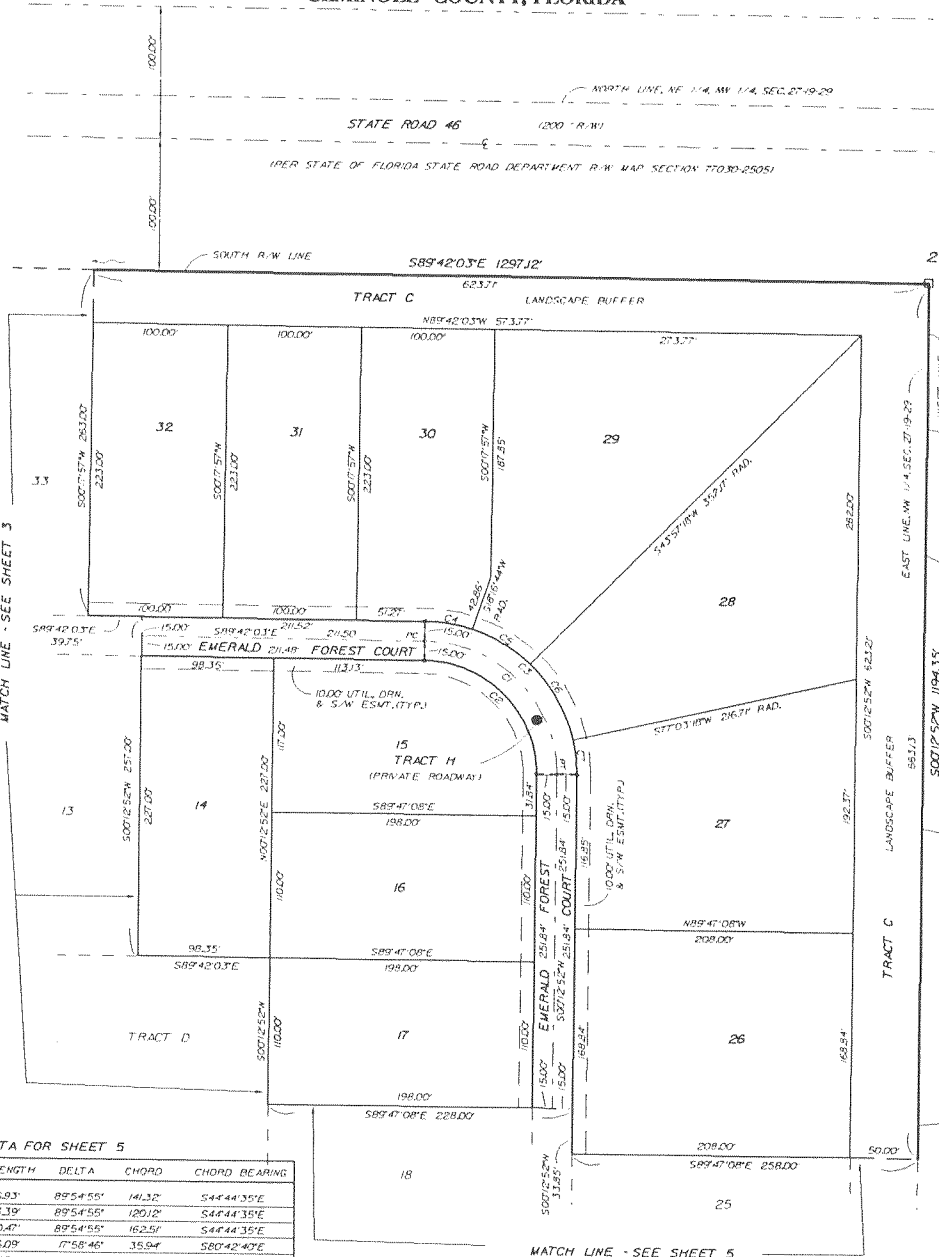
PLAT BOOK PAGE



- PLAT LEGEND:**
- C - CURVE
 - CCR - CERTIFIED CORNER RECORD
 - CM - CONCRETE MONUMENT
 - CON - CONNER
 - DELTA - CENTRAL ANGLE
 - DM - DRAINAGE
 - ESMT - EASEMENT
 - ID - IDENTIFICATION
 - IP - IRON PIPE
 - LB - LICENSED BUSINESS
 - NLD - NAIL AND DISK
 - NR - NON-RADIAL
 - OR - OFFICIAL RECORDS BOOK
 - PB - PLAT BOOK
 - PC - POINT OF CURVATURE
 - PCC - POINT OF COMPOUND CURVATURE
 - PCP - PERMANENT CONTROL POINT
 - PD - PLANNED DEVELOPMENT
 - PG - PAGE
 - POC - POINT ON CURVE
 - PRC - POINT OF REVERSE CURVATURE
 - PRM - PERMANENT REFERENCE MOVEMENT
 - PSM - PROFESSIONAL SURVEYOR MAPPER
 - PT - POINT OF TANGENCY
 - RAD - RADIAL
 - REC - RECOVERED
 - R/W - RIGHT-OF-WAY
 - SEC - SECTION
 - S/W - SIDEWALK
 - TB - TANGENT BEARING
 - TYP - TYPICAL
 - UTIL - UTILITIES
 - LINE BREAK - TOTAL LINE DIMENSION
 - CHANGE IN DIRECTION - DENOTES P.C.P. 14" x 4" CMI LB #1221, UNLESS OTHERWISE NOTED
 - DENOTES P.C.P. LB #1221, UNLESS OTHERWISE NOTED

CURVE DATA FOR SHEET 5

CURVE	RADIUS	TANGENT	ARC LENGTH	DELTA	CHORD	CHORD BEARING
1	100.00'	99.85'	156.93'	89°54'55"	141.32'	S44°44'35"E
2	85.00'	84.67'	133.39'	89°54'55"	120.12'	S44°44'35"E
3	115.00'	114.83'	180.40'	89°54'55"	162.51'	S44°44'35"E
4	115.00'	18.19'	36.09'	17°58'46"	35.94'	S80°42'49"E
5	115.00'	26.21'	51.54'	25°40'34"	51.17'	S58°52'59"E
6	115.00'	34.77'	66.44'	33°06'00"	65.52'	S29°29'42"E
7	115.00'	13.26'	26.41'	13°09'34"	26.35'	S06°21'55"E



BOWYER-SINGLETON & ASSOCIATES, INCORPORATED
 ENGINEERING • PLANNING • SURVEYING • ENVIRONMENTAL
 520 SOUTH MADRID AVENUE • ORLANDO, FLORIDA 32801
 407.843.5000 • FAX 407.843.0644
 CERTIFICATE OF AUTHORIZATION NO. LB 1221

MARKHAM FOREST

SECTION 27, TOWNSHIP 19 SOUTH, RANGE 29 EAST A PORTION OF THE PETER MIRANDS GRANT SEMINOLE COUNTY, FLORIDA

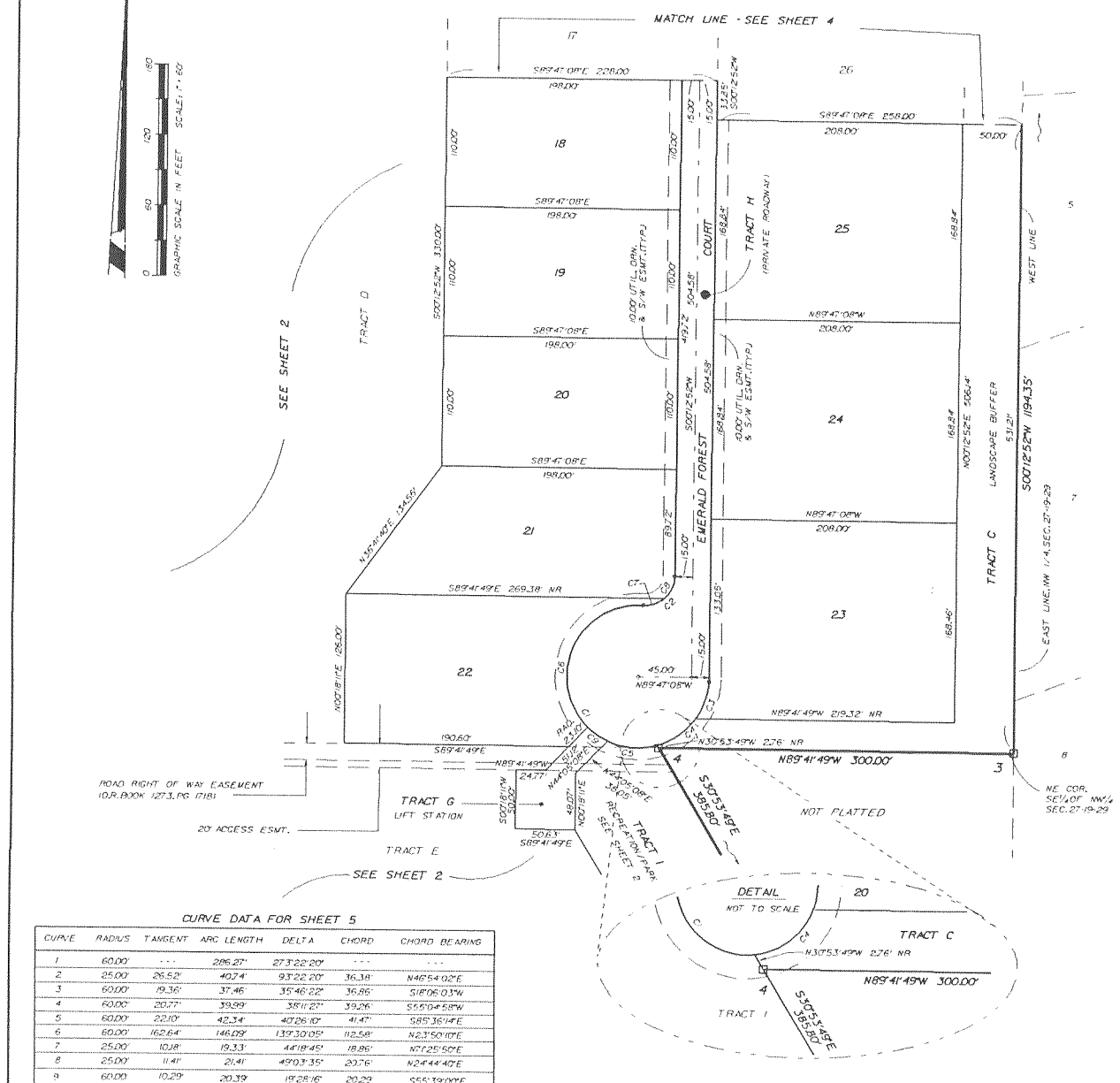
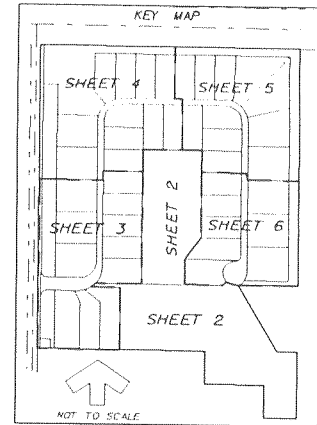
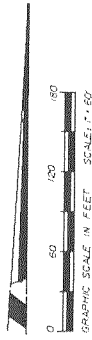
SHEET 6 OF 6

PLAT BOOK PAGE

NOTICE

THIS PLAT, AS RECORDED IN ITS GRAPHIC FORM, IS THE OFFICIAL DEPICTION OF THE SUBDIVIDED LANDS DESCRIBED HEREIN AND WILL IN NO CIRCUMSTANCES BE SUPPLANTED IN AUTHORITY BY ANY OTHER GRAPHIC OR DIGITAL FORM OF THE PLAT.

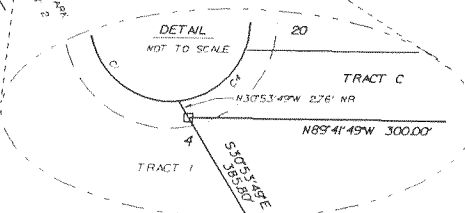
THERE MAY BE ADDITIONAL RESTRICTIONS THAT ARE NOT RECORDED ON THIS PLAT THAT MAY BE FOUND IN THE PUBLIC RECORDS OF THIS COUNTY.



- PLAT LEGEND
- C - CURVE
 - CCR - CERTIFIED CORNER RECORD
 - CM - CONCRETE MONUMENT
 - CCR - CORNER
 - DELTA - CENTRAL ANGLE
 - ORN - ORDNANCE
 - ESMT - EASEMENT
 - ID - IDENTIFICATION
 - IP - IRON PIPE
 - LB - LICENSED BUSINESS
 - N/D - NAIL AND DISK
 - NR - NON-BASAL
 - OR - OFFICIAL RECORDS BOOK
 - PB - PLAT BOOK
 - PC - POINT OF CURVATURE
 - PCC - POINT OF COMPOUND CURVATURE
 - PCR - PERMANENT CONTROL POINT
 - PD - PLANNED DEVELOPMENT
 - PD - PAGE
 - PKC - POINT ON CURVE
 - PRC - POINT OF REVERSE CURVATURE
 - PRM - PERMANENT REFERENCE MONUMENT
 - PSW - PROFESSIONAL SURVEYOR MARKER
 - PT - POINT OF TANGENCY
 - RAD - RADIAL
 - REC - RECOVERED
 - R/W - RIGHT-OF-WAY
 - SEC - SECTION
 - S/W - SIDEWALK
 - TB - TANGENT BEARING
 - TVE - TYPICAL
 - UTIL - UTILITY
 - - LINE BREAK
 - - TOTAL LINE DIMENSION
 - ▲ - CHANGE IN DIRECTION
 - - DIMOTES P. 2, 3, 4, 14" x 14" CM PL
 - - DIMOTES P. 2, 3, 4, 14" x 14" CM PL
 - - DIMOTES P.C.P. LB #1221, UNLESS OTHERWISE NOTED
 - - DIMOTES P.C.P. LB #1221, UNLESS OTHERWISE NOTED

CURVE DATA FOR SHEET 5

CURVE	RADIUS	TANGENT	ARC LENGTH	DELTA	CHORD	CHORD BEARING
1	60.00	206.27'	273.22 20'	111.80°	363.38'	S89°41'49"W
2	25.00	40.74'	93.22 20'	111.80°	36.38'	N46°54'02"E
3	60.00	19.36'	37.46'	35°46'22"	36.85'	S18°05'03"W
4	60.00	20.77'	39.99'	38°11'27"	39.26'	S55°04'58"W
5	60.00	22.10'	42.34'	40°26'10"	41.47'	S55°36'14"E
6	60.00	162.64'	146.09'	139°30'05"	112.58'	N2°35'01"E
7	25.00	10.81'	19.33'	44°18'45"	18.86'	N72°50'50"E
8	25.00	11.41'	21.41'	49°03'35"	23.76'	N2°44'40"E
9	60.00	10.29'	20.39'	19°28'16"	20.29'	S55°39'00"E



BOWYER-SINGLETON & ASSOCIATES, INCORPORATED

ENGINEERING • PLANNING • SURVEYING • ENVIRONMENTAL
520 SOUTH MADISON AVENUE, ORLANDO, FLORIDA 32801
407-843-5120 • FAX 407-848-8844
CERTIFICATE OF AUTHORIZATION NO. LB 1221



EXHIBIT B

Markham Forest



0 1000 Feet

A horizontal scale bar with a thick black line. The number "0" is at the left end and "1000 Feet" is at the right end.