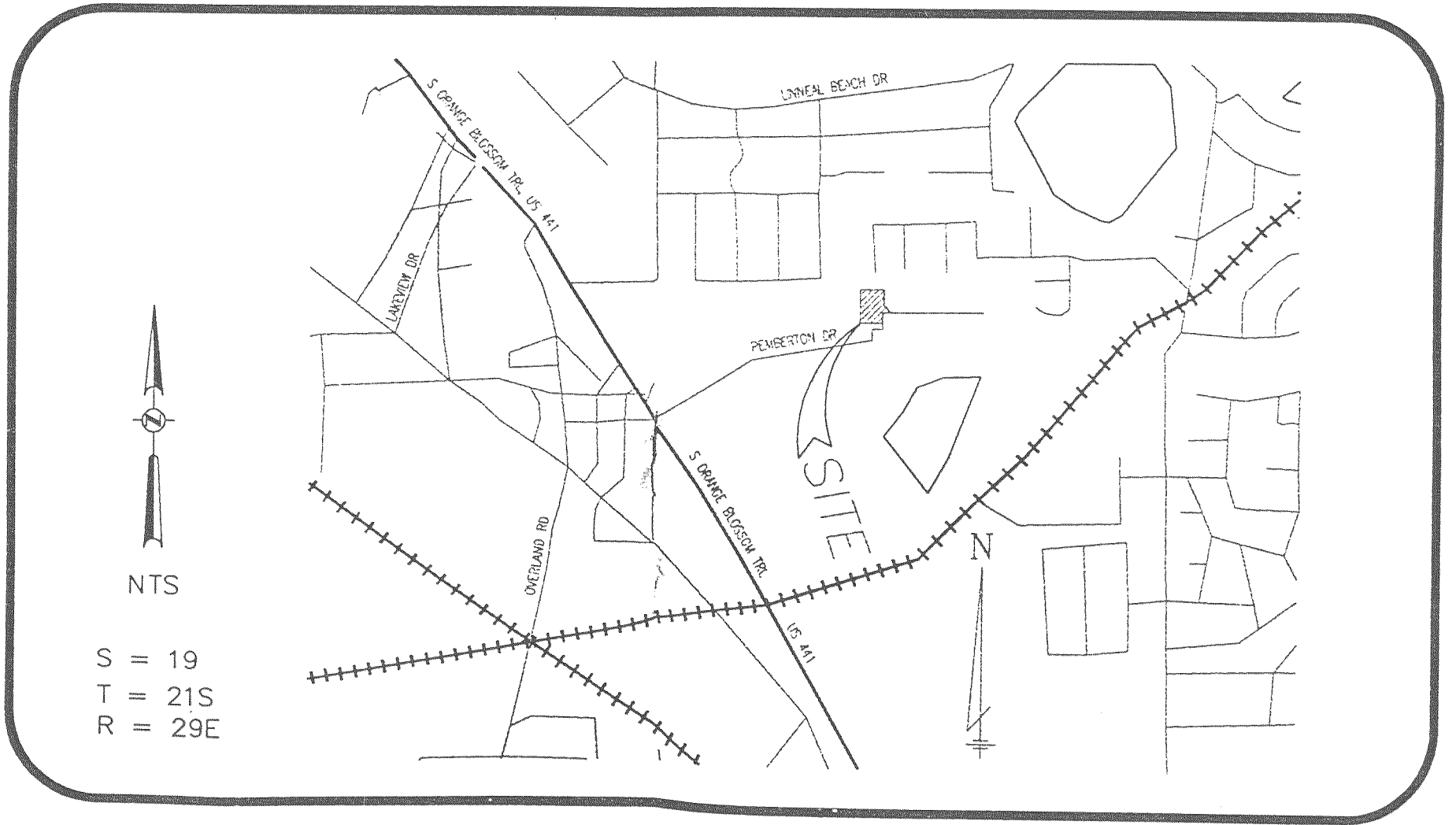




# LOCATION MAP

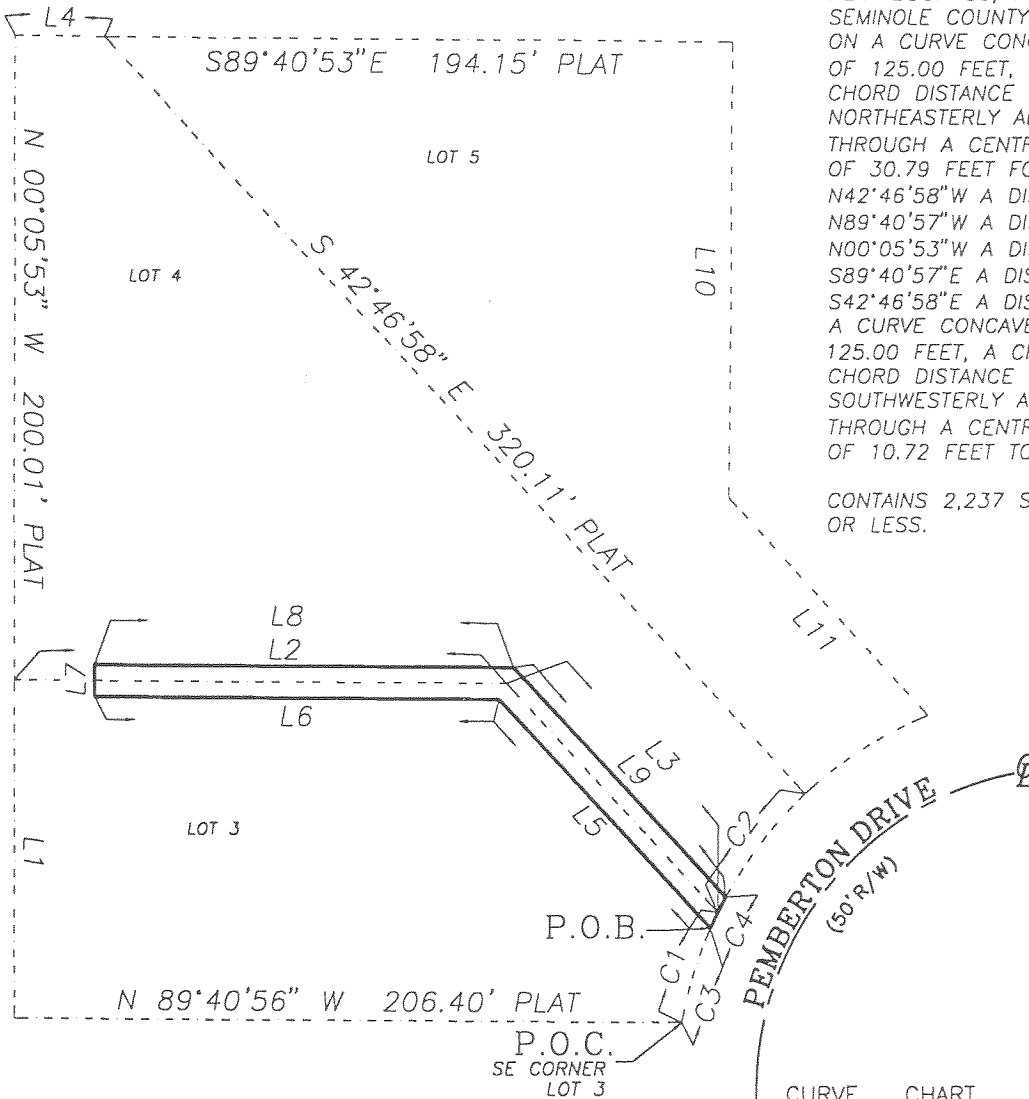


# SKETCH OF DESCRIPTION

## DESCRIPTION

COMMENCE AT THE SOUTHEAST CORNER OF LOT 3, ORANGE BLOSSOM BUISNESS CENTER, AS RECORDED IN PLAT BOOK 50, PAGE 72, PUBLIC RECORDS OF SEMINOLE COUNTY, FLORIDA; SAID POINT BEING A POINT ON A CURVE CONCAVE SOUTHEASTERLY, HAVING A RADIUS OF 125.00 FEET, A CHORD BEARING OF N16°34'57"E, A CHORD DISTANCE OF 30.71 FEET, RUN THENCE NORTHEASTERLY ALONG THE ARC OF SAID CURVE, THROUGH A CENTRAL ANGLE OF 14°06'46", A DISTANCE OF 30.79 FEET FOR A POINT OF BEGINNING; THENCE N42°46'58"W A DISTANCE OF 96.58 FEET; THENCE N89°40'57"W A DISTANCE OF 124.73 FEET; THENCE N00°05'53"W A DISTANCE OF 10.00 FEET; THENCE S89°40'57"E A DISTANCE OF 129.14 FEET; THENCE S42°46'58"E A DISTANCE OF 97.05 FEET TO A POINT ON A CURVE CONCAVE SOUTHEASTERLY, HAVING A RADIUS OF 125.00 FEET, A CHORD BEARING OF S26°05'48"W, A CHORD DISTANCE OF 10.72 FEET, RUN THENCE SOUTHWESTERLY ALONG THE ARC OF SAID CURVE, THROUGH A CENTRAL ANGLE OF 4°54'55", A DISTANCE OF 10.72 FEET TO THE POINT OF BEGINNING.

CONTAINS 2,237 SQUARE FEET OR 0.051 ACRES MORE OR LESS.



### LINE CHART

L1	N 00°05'53" W	105.00'
L2	S 89°40'57" E	151.94'
L3	S 42°46'58" E	96.69'
L4	S 89°40'53" E	27.86'
L5	N 42°46'58" W	96.58'
L6	N 89°40'57" W	124.73'
L7	N 00°05'53" W	10.00'
L8	S 89°40'57" E	129.14'
L9	S 42°46'58" E	97.05'
L10	S 00°19'05" W	141.60'
L11	S 42°46'58" E	92.45'

NO.	CENTRAL ANGLE	RADIUS	CURVE ARC LENGTH	CHART TANGENT	CHORD BEARING	CHORD DISTANCE
C1	16°35'27"	125.00'	36.20'	18.23'	S 17°49'18" W	36.07'
C2	21°06'06"	125.00'	46.04'	23.28'	S 36°40'04" W	45.78'
C3	14°06'46"	125.00'	30.79'	15.47'	N 16°34'57" E	30.71'
C4	4°54'55"	125.00'	10.72'	5.37'	S 26°05'48" W	10.72'

THIS SKETCH IS NOT A BOUNDARY SURVEY.

CF# SC50-72LOTS3-5SKETCH1  
 DATE: 11-08-04  
 SCALE: 1" = 60'  
 DRAWN BY: TRK11

PREPARED FOR: GUY WINGO

REVISIONS:

BEARING STRUCTURE BASED ON: WESTERLY R/W LINE PEMBERTON DRIVE.

THIS SKETCH MEETS THE "MINIMUM TECHNICAL STANDARDS" AS REQUIRED BY CHAPTER 61G17-6, FLORIDA BOARD OF LAND SURVEYORS, PURSUANT TO SECTION 472.027 OF THE FLORIDA STATUTES.

DATE: 11-18-09

*Robert C. Johnson*  
**ROBERT C. JOHNSON PSM 5551**

\*NOT VALID WITHOUT THE SIGNATURE AND THE ORIGINAL RAISED SEAL OF THIS FLORIDA LICENSED SURVEYOR AND MAPPER.\*

**ACCURIGHT SURVEYS**  
 of Orlando Inc., LB 4475  
 2012 E. Robinson St.  
 Orlando, Florida 32803  
 (407) 894-6314

LEGEND	
CALC - CALCULATED	CBW - CONCRETE BLOCK WALL
CLF - CHAIN LINK FENCE	CM - CONCRETE MONUMENT
CONC - CONCRETE	COVD - COVERED
CP - CONCRETE PAD	CW - CONCRETE WALKWAY
Δ - CENTRAL ANGLE	DE - DRAINAGE EASEMENT
DW - DRIVEWAY	ESMT - EASEMENT
E/P - EDGE OF PAVEMENT	FFE - FINISHED FLOOR ELEVATION
FND - FOUND	IP - IRON PIPE
IR - IRON ROD	L - ARC LENGTH
MEAS - MEASURED	MS - METAL SHED
N&D - NAIL & DISK	OL - ON LINE
PC - POINT OF CURVATURE	P&M - PLAT & MEASURED
POB - POINT OF BEGINNING	POC - POINT OF COMMENCEMENT
R - RADIUS	R/W - RIGHT OF WAY
TYP - TYPICAL	UB - UTILITY BOX
UE - UTILITY EASEMENT	WF - WOOD FENCE



RESOLUTION NO.: 2005-R-

THE FOLLOWING RESOLUTION WAS ADOPTED AT THE REGULAR MEETING OF THE BOARD OF COUNTY COMMISSIONERS OF SEMINOLE COUNTY, FLORIDA ON THE 12th DAY OF April A.D., 2005.

**RESOLUTION TO VACATE AND ABANDON A UTILITY EASEMENT**

.....

Whereas, a Petition was presented on behalf of

**WINGO GUY**

\_\_\_\_\_

to the Board of County Commissioners of Seminole County, Florida, requesting the closing, vacating, and abandoning of the following described utility easement to-wit:

**SEE EXHIBIT A**

Whereas, after due consideration the Board of County Commissioners of Seminole County, Florida, having determined that the abandonment of the above described utility easement is to the best interest of the County and the public in that the area in question is not needed for utility purposes and not necessary for public need.

NOW THEREFORE BE IT RESOLVED by the Board of County Commissioners of Seminole County, Florida, that the above described utility easement be, and the same is hereby abandoned, closed, and vacated, and that all right in and to the same on behalf of the County and the public be, and the same is hereby disclaimed.

PASSED AND ADOPTED this 12th day of April A.D., 2005.

ATTEST:

**BOARD OF COUNTY COMMISSIONERS  
OF SEMINOLE COUNTY, FLORIDA**

\_\_\_\_\_  
**MARYANNE MORSE**  
**CLERK OF THE CIRCUIT COURT**  
**SEMINOLE COUNTY, FLORIDA**

BY: \_\_\_\_\_  
**CARLTON D. HENLEY**  
**CHAIRMAN**