

**SEMINOLE COUNTY GOVERNMENT
AGENDA MEMORANDUM**

SUBJECT: Water Conservation Garden at the County Services Building

DEPARTMENT: Environmental Services **DIVISION:** Water and Wastewater

AUTHORIZED BY: *Robert G. Adolphe* **CONTACT:** Liz Block **EXT.** 2121
Robert G. Adolphe, P.E., Director Sr. Engineer

Agenda Date	<u>01/27/04</u>	Regular	<input type="checkbox"/>	Consent	<input type="checkbox"/>	Work Session	<input type="checkbox"/>	Briefing	<input checked="" type="checkbox"/>
		Public Hearing – 1:30	<input type="checkbox"/>	Public Hearing – 7:00	<input type="checkbox"/>				

MOTION/RECOMMENDATION:

Briefing Item only.

BACKGROUND:

Landscape irrigation accounts for 50 to 80% of residential water use, and is the water use with the greatest potential for effective conservation. The greatest reduction in water use can be achieved by replacing high water demand St. Augustine lawn with drought tolerant shrubs and groundcover. The Water Conservation Garden, to be located at the entrance to the County Services Building, has been designed to educate and promote attractive landscape alternatives. Additionally, implementation of such a garden is required in the Northwest Service Area Consumptive Use Permit.

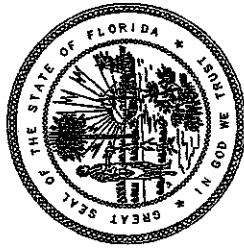
Paths, pavers, and benches are to be installed immediately after contracting is completed on or about February 2004, and plants and signage by the end of April 2004. The Garden's high visibility at the entrance to the County Services Building requires a quality product. Costs are estimated at \$50,000, and adequate funding for contracted services is available from the current budget. Also, a significant portion of this cost will be covered by cost sharing with St. Johns River Water Management District, and materials and services donated through partnerships including fill, soil amendments, mulch, microirrigation, signage, and some plants.

Reviewed by:
Co Atty: <u>na</u>
DFS: <u>na</u>
Other:
DCM: <u><i>[Signature]</i></u>
CM: <u><i>[Signature]</i></u>
File No. <u>CESW01</u>

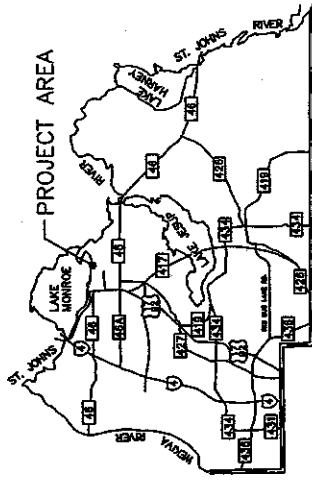
SEMINOLE COUNTY ENVIRONMENTAL SERVICES



ENVIRONMENTAL SERVICES
DIRECTOR
BOB ADOLPHE

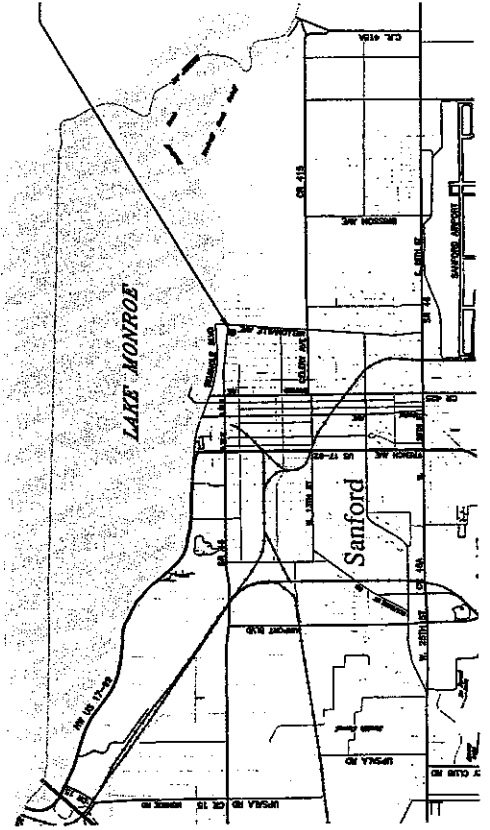


WATER CONSERVATION
COORDINATOR
LIZ BLOCK



WATER CONSERVATION DEMONSTRATION GARDEN LANDSCAPE PLANS

PROJECT LOCATION
SEMINOLE COUNTY SERVICES BUILDING
1101 E. FIRST ST.
SANFORD, FLORIDA



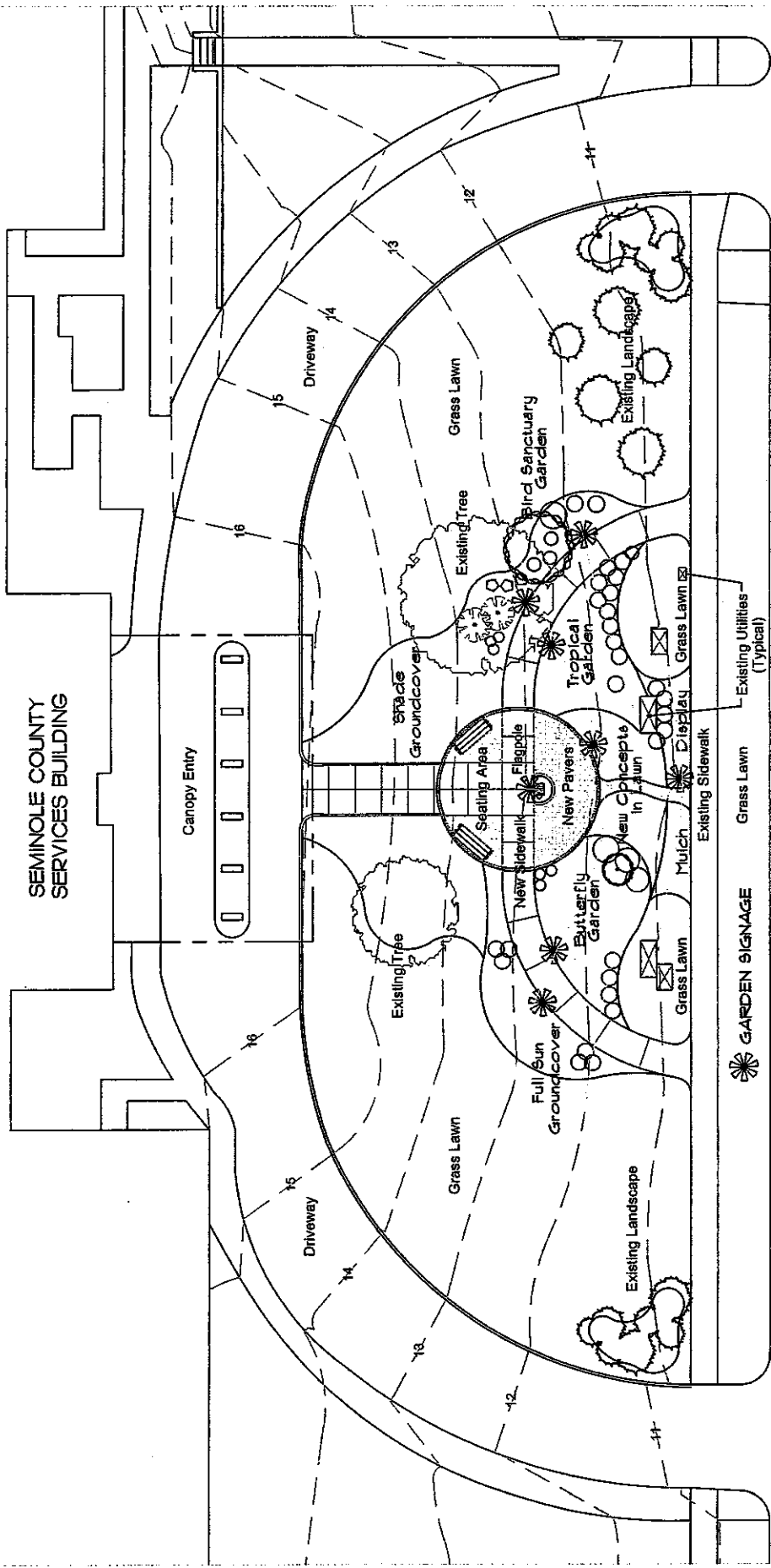
THIS CONTRACT PLAN SET INCLUDES:
LANDSCAPE PLANS

INDEX OF LANDSCAPE PLANS	SHEET NO.	SHEET DESCRIPTION
COVER		KEY SHEET
L-2		PLANTING DETAILS AND NOTES
L-3		MASTER LAYOUT PLAN
L-4		PLANTING SCHEDULE
L-5		PLANTING SCHEDULE
L-6		HARDSCAPE LAYOUT
L-7		HARDSCAPE DETAILS
L-8		HARDSCAPE DETAILS
L-9		GARDEN DETAILS

ATTENTION IS DIRECTED TO THE FACT THAT THESE PLANS
MAY HAVE BEEN CHANGED IN SIZE BY REPRODUCTION.
THIS MUST BE CONSIDERED WHEN OBTAINING SCALED DATA.
PREPARED BY SEMINOLE COUNTY ENGINEERING DIVISION
520 WEST LAKE MARY BOULEVARD, SUITE 200
SANFORD, FLORIDA 32775
(407) 685-2083

BY	DATE	REVISIONS	DESCRIPTION

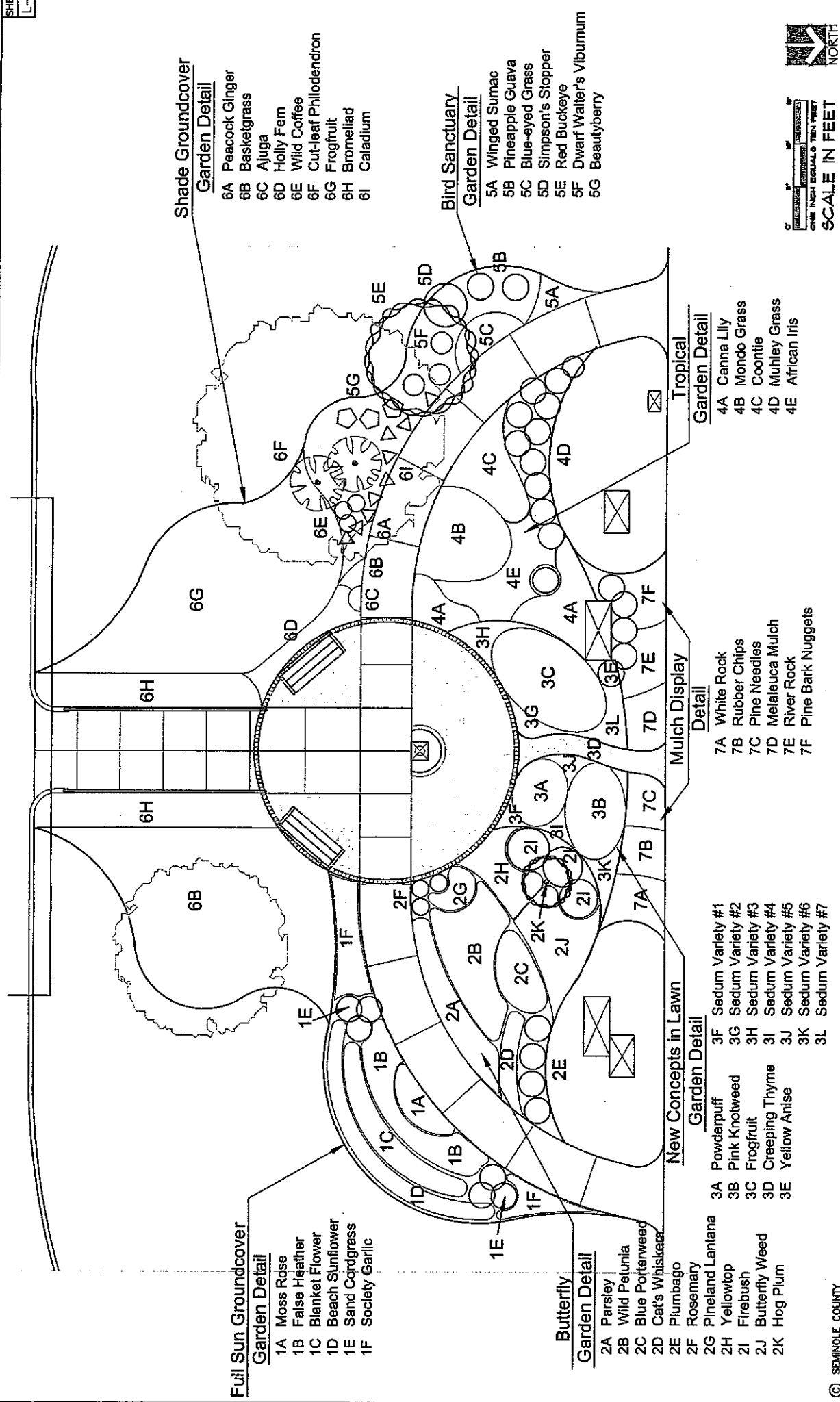
SEMINOLE COUNTY SERVICES BUILDING



FIRST STREET



SCALE IN FEET
 ONE INCH EQUALS TWENTY FEET



Shade Groundcover
Garden Detail

- 6A Peacock Ginger
- 6B Basketgrass
- 6C Ajuga
- 6D Holly Fern
- 6E Wild Coffee
- 6F Cut-leaf Philodendron
- 6G Frogfruit
- 6H Bromeliad
- 6I Caladium

Bird Sanctuary
Garden Detail

- 5A Winged Sumac
- 5B Pineapple Guava
- 5C Blue-eyed Grass
- 5D Simpson's Stopper
- 5E Red Buckeye
- 5F Dwarf Walter's Viburnum
- 5G Beautyberry

Full Sun Groundcover
Garden Detail

- 1A Moss Rose
- 1B False Heather
- 1C Blanket Flower
- 1D Beach Sunflower
- 1E Sand Cordgrass
- 1F Society Garlic

Butterfly
Garden Detail

- 2A Parsley
- 2B Wild Petunia
- 2C Blue Porterweed
- 2D Cat's Whiskers
- 2E Plumbago
- 2F Rosemary
- 2G Pine/land Lantana
- 2H Yellowtop
- 2J Firebush
- 2K Butterfly Weed
- 2K Hog Plum

New Concepts in Lawn
Garden Detail

- 3A Powderpuff
- 3B Pink Knotweed
- 3C Frogfruit
- 3D Creeping Thyme
- 3E Yellow Anise
- 3F Sedum Variety #1
- 3G Sedum Variety #2
- 3H Sedum Variety #3
- 3I Sedum Variety #4
- 3J Sedum Variety #5
- 3K Sedum Variety #6
- 3L Sedum Variety #7

Mulch Display
Detail

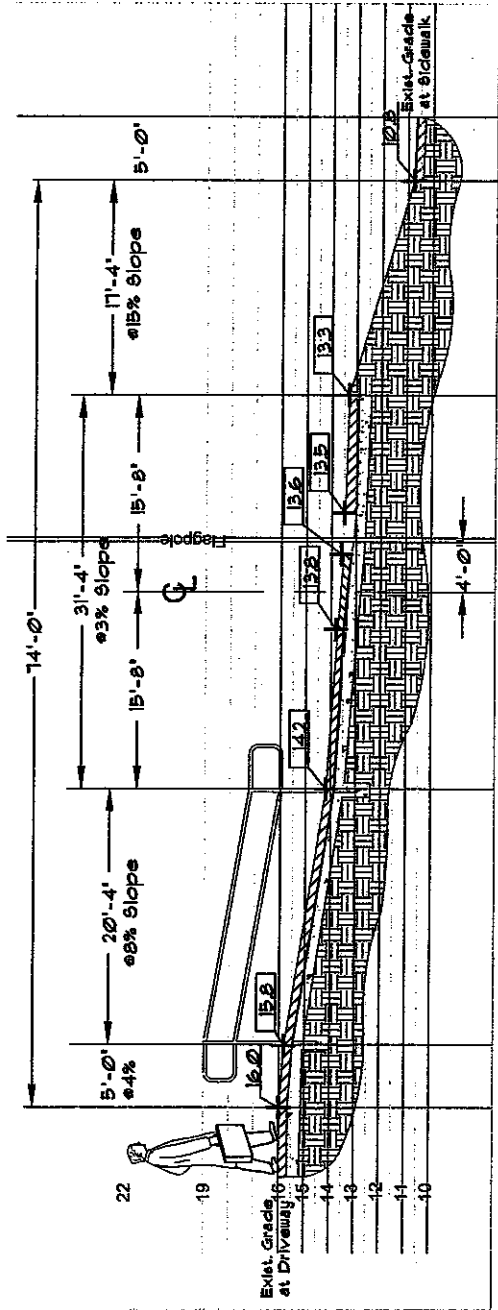
- 7A White Rock
- 7B Rubber Chips
- 7C Pine Needles
- 7D Metaleuca Mulch
- 7E River Rock
- 7F Pine Bark Nuggets

Tropical
Garden Detail

- 4A Canna Lily
- 4B Mondo Grass
- 4C Coontie
- 4D Muhley Grass
- 4E African Iris

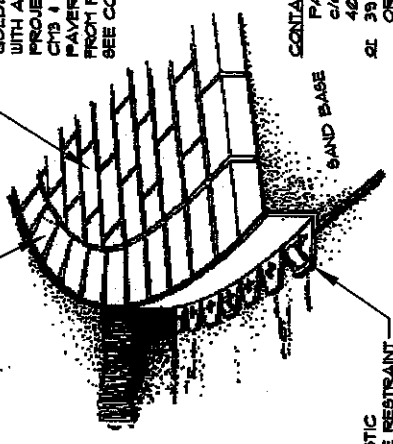


Symbol	Quantity	Botanical Nomenclature	Common Name	Native?	Garden	Spacing/ Size
<u>Fall Hardscape Scope</u>						
		<i>Stenotaphrum secundatum</i>	St Augustine sod	Y	Outside garden area	
		<i>Secale cereale</i>	Winter rye grass	N	Seed garden area for the winter	
<u>Spring Garden Scope</u>						
1A	9	<i>Portulaca grandiflora</i>	Moss rose	N	Sun Groundcover	1' OC, 1G
1B	12	<i>Cuphea hyssopifolia</i>	False heather	N	Sun Groundcover	2' OC, 1G
1C	7	<i>Gaillardia pulchella</i>	Blanket flower	Y	Sun Groundcover	3' OC, 1G
1D	10	<i>Helianthus debilis</i>	Beach sunflower	Y	Sun Groundcover	3' OC, 1G
1E	6	<i>Spartina bakeri</i>	Sand cordgrass	Y	Sun Groundcover	3' OC, 1G
1F	20	<i>Tulbaghia violacea</i>	Society garlic	N	Sun Groundcover	2' OC, 1G
2A	10	<i>Petroselinum crispum</i>	Parsley	N	Butterfly	1' OC, 1G
2B	20	<i>Ruellia caroliniana</i>	Wild petunia	Y	Butterfly	1' OC, 1G
2C	4	<i>Stachytarpheta jamaicensis</i>	Blue porterweed	Y	Butterfly	3' OC, 1G
2D	2	<i>Orthosiphon stamineus</i>	Cat's whiskers	N	Butterfly	3' OC, 3 G
2E	2	<i>Plumbago auriculata</i>	Plumbago	N	Butterfly	3' OC, 3 G
2F	3	<i>Rosemarinus officinalis</i>	Rosemary	N	Butterfly	3' OC, 1G
2G	5	<i>Lantana depressa</i>	Pineland lantana	Y	Butterfly	3' OC, 1G
2H	5	<i>Flaveria linearis</i>	Yellowtop	Y	Butterfly	3' OC, 1G
2I	3	<i>Hamelia patens</i>	Firebush	Y	Butterfly	4' OC, 3G,
2J	20	<i>Asclepias tuberosa</i>	Butterfly weed	Y	Butterfly	6" OC, 1G
2K	1	<i>Prunus umbellata</i>	Hog plum	Y	Butterfly	15G
3A	9	<i>Mimosa strigillosa</i>	Powderpuff	Y	New Concepts	1' OC, 1G
3B	5	<i>Polygonum capitatum</i>	Pink knotweed	N	New Concepts	2' OC, 1G
3C		<i>Phyla nodiflora</i>	Frogfruit	Y	New Concepts	6" OC, 4"
3D	36	<i>Thymus serpyllum</i>	Creeping thyme	N	New Concepts	6" OC, 4"
3E	5	<i>Illicium parviflorum</i>	Yellow anise	Y	New Concepts	3' OC, 3G
3F	3	<i>Sedum sp.</i>	Sedum variety 1	N	New Concepts	1' OC, 1G
3G	3	<i>Sedum sp.</i>	Sedum variety 2	N	New Concepts	1' OC, 1G
3H	3	<i>Sedum sp.</i>	Sedum variety 3	N	New Concepts	1' OC, 1G
3I	3	<i>Sedum sp.</i>	Sedum variety 4	N	New Concepts	1' OC, 1G
3J	3	<i>Sedum sp.</i>	Sedum variety 5	N	New Concepts	1' OC, 1G
3K	3	<i>Sedum sp.</i>	Sedum variety 6	N	New Concepts	1' OC, 1G
3L	3	<i>Sedum sp.</i>	Sedum variety 7	N	New Concepts	1' OC, 1G
4A	20	<i>Canna X generalis</i>	Canna lily	N	Tropical	2' OC, 3G, scattered
4B	60	<i>Ophiopogon japonicus</i>	Mondo grass	N	Tropical	1' OC, 1G
4C	7	<i>Zamia floridana</i>	Coontie	Y	Tropical	3' OC, 3G
4D	9	<i>Muhlenbergia capillaris</i>	Muhley grass	Y	Tropical	3' OC, 3G
4F	7	<i>Dietes iridioides</i>	African iris	N	Tropical	2' OC, 1G
5A	3	<i>Rhus copallinum</i>	Winged sumac	Y	Bird	3' OC, 1G
5B	1	<i>Feijoa sellowiana</i>	Pineapple guava	N	Bird	3G
5C	100	<i>Sisyrinchium angustifolium</i>	Blue-eyed grass	Y	Bird	6" OC, 4"
5D	1	<i>Myrcianthes fragrans</i>	Simpson's stopper	Y	Bird	3G
5E	1	<i>Aesculus pavia</i>	Red buckeye	Y	Bird	15G
5F	2	<i>Viburnum obovatum</i>	Dwarf Walter's viburnu	Y	Bird	4' OC, 3G
5G	3	<i>Callicarpa americana</i>	Beautyberry	Y	Bird	3G
6A	8	<i>Kaempferia laotica</i>	Peacock ginger	N	Shade Groundcover	2' OC, 1G
6B	9	<i>Oplismenus hirtellus</i>	Basket grass	Y	Shade Groundcover	1' OC, 1G
6B		<i>Oplismenus hirtellus</i>	Basket grass	Y	Shade Groundcover	1' OC
6C	8	<i>Ajuga reptans</i>	Ajuga	N	Shade Groundcover	1' OC, 1G
6D	5	<i>Cyrtomium falcatum</i>	Holly fern	N	Shade Groundcover	2' OC, 3G,
6E	5	<i>Psychotria nervosa</i>	Wild coffee	Y	Shade Groundcover	3G
6F	2	<i>Philodendron bipinnatifidum</i>	Cut-leaf philodendron	N	Shade Groundcover	4' OC, 3G
6G		<i>Phyla nodiflora</i>	Frogfruit	Y	Shade Groundcover	1' OC, 4"
6H			Bromeliad	Y	Shade Groundcover	2' OC, 1G
6I	7	<i>Caladium bicolor</i>	Caladium	N	Shade Groundcover	scattered,



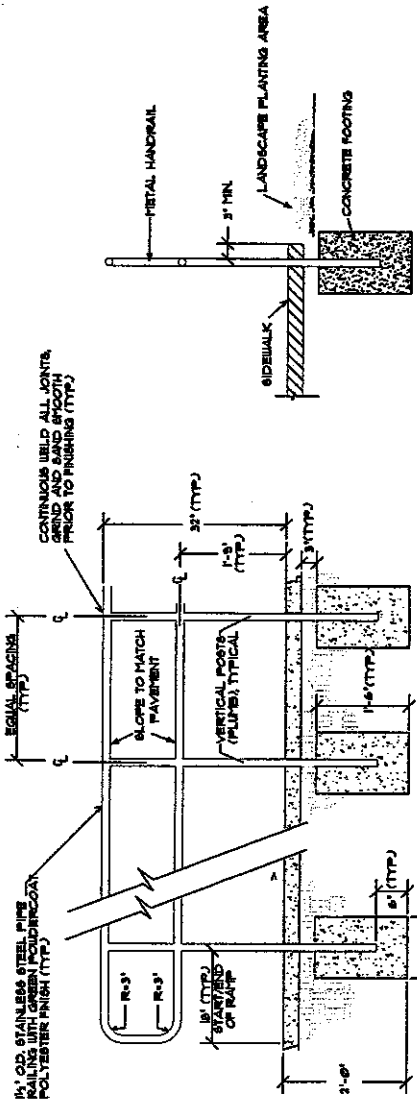
3/4" EDGE CONDITIONS TYP.
PAVER COLOR: RED

RUNNING BOND PATTERN
PAVER COLOR: TO BE A
50/50 MIX OF CM3 AND
GOLDENROD, OR EQUIV.
WITH APPROVAL OF
PROJECT MGR.
CM3 & GOLDENROD
PAVER COLORS AVAIL.
FROM PAVERS SYSTEMS.
SEE CONTACT INFO BELOW

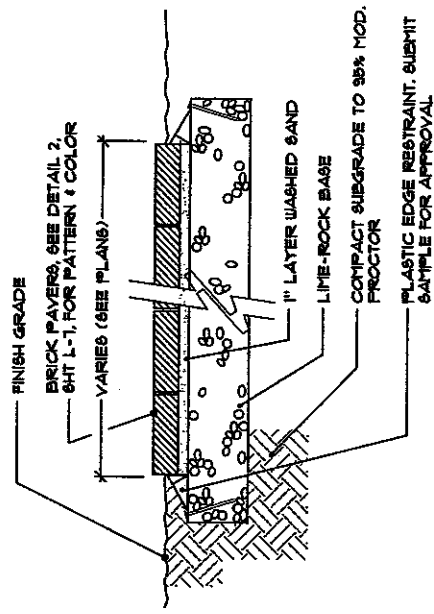


CONTACT INFO:
 PAVERS SYSTEMS
 c/o MIKE DONAHUE
 407/989-8111
 39 W. LANDSTREET RD.
 ORLANDO, FL 32824

2 BRICK PAVER PATTERN
SCALE: NTS



1 HAND RAIL ENDPIECE
SCALE: NTS



3 BRICK PAVERS ON SAND
SCALE: NTS