

SEMINOLE COUNTY GOVERNMENT AGENDA MEMORANDUM

SUBJECT: Resolution and Maintenance Map for Beardall Avenue

DEPARTMENT: Public Works **DIVISION:** Engineering

AUTHORIZED BY: *W. Gary Johnson* **CONTACT:** Antoine I. Khoury, P.E. ^{AKK} EXT. 5768
W. Gary Johnson, P.E., Director Jerry McCollum, P.E., County Engineer

Agenda Date <u>01/10/06</u>	Regular <input type="checkbox"/>	Consent <input checked="" type="checkbox"/>	Work Session <input type="checkbox"/>	Briefing <input type="checkbox"/>
	Public Hearing – 1:30 <input type="checkbox"/>		Public Hearing – 7:00 <input type="checkbox"/>	

MOTION/RECOMMENDATION:

Adopt and authorize the Chairman to execute the Resolution accepting a Maintenance Map for Beardall Avenue from Celery Avenue (County Road 415) south to State Road 46.

District 5 – Commissioner Brenda Carey (Jerry McCollum, P.E., County Engineer)

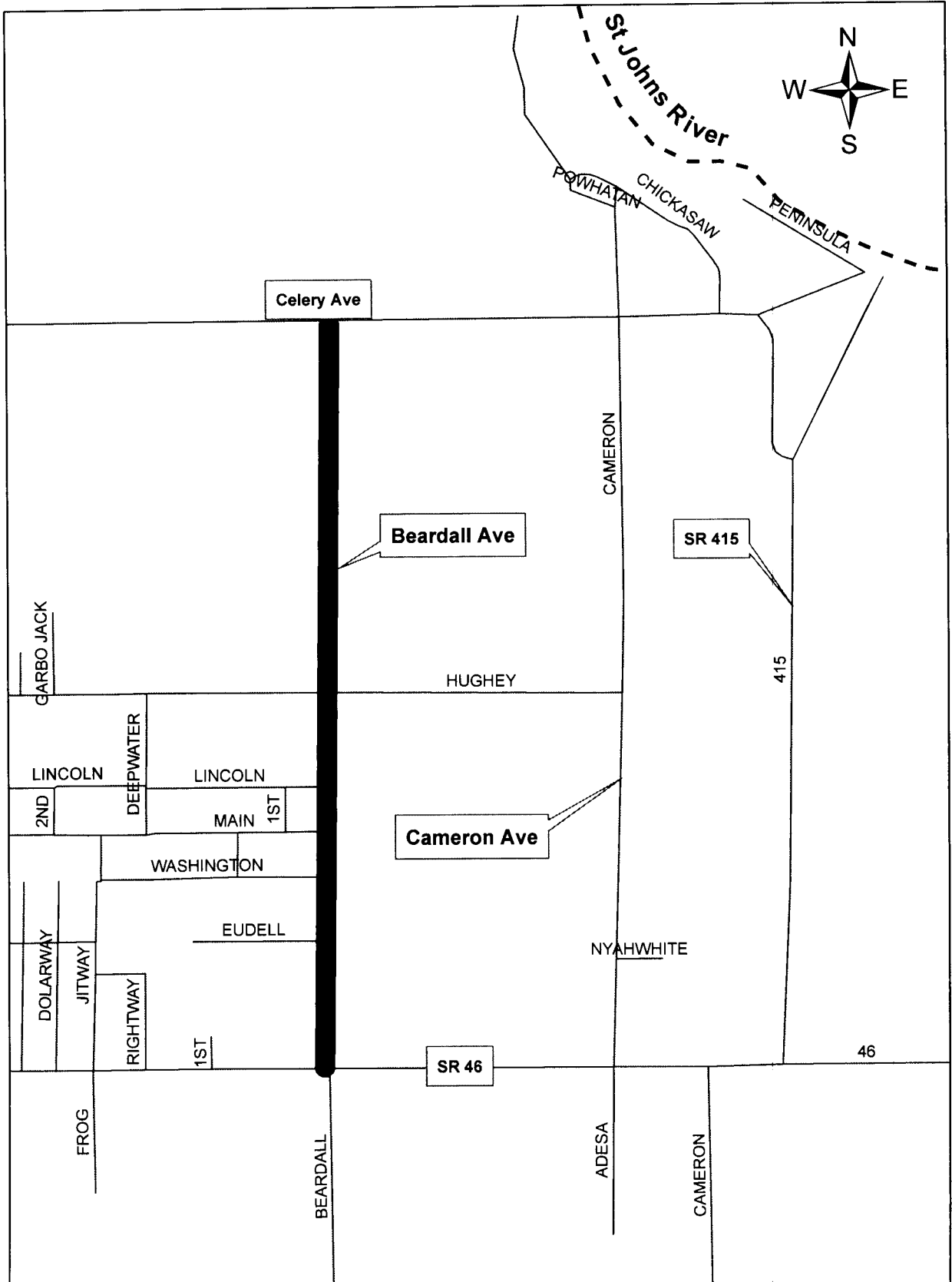
BACKGROUND:

Adoption of the maintenance map will facilitate continued road and utility maintenance while accommodating utility service to a new school site in the Midway area.

Attachments: Location Map
Resolution
Maintenance Map
(Available for Review in the County Engineer's Office)

Reviewed by:	<u><i>HMB</i></u>
Co Atty:	<u><i>HMB</i></u>
DFS:	_____
Other:	_____
DCM:	<u><i>JD</i></u>
CM:	_____
File No.	<u>CPWE02</u>

Beardall Avenue



RESOLUTION

THE FOLLOWING RESOLUTION WAS ADOPTED AT THE REGULAR MEETING OF THE BOARD OF COUNTY COMMISSIONERS OF SEMINOLE COUNTY, FLORIDA, ON THE _____ DAY OF _____ A.D., 2006.

WHEREAS, Beardall Avenue, located in Section 33, Township 19 South, Range 31 East, in Seminole County, Florida, is a public road which has been in the County Road System for many years; and

WHEREAS, portions of said Beardall Avenue have vested in the County by means of instruments of conveyance, plat dedications and/or continuous and uninterrupted repair and maintenance; and

WHEREAS, the portion of said Beardall Avenue from Celery Avenue (CR 415) south to SR 46 as depicted on that certain Maintenance Map completed and dated December 13, 2005 has been maintained and repaired continuously and uninterruptedly by Seminole County for a time period exceeding seven (7) years; and

WHEREAS, Section 95.361 (3), *Florida Statutes* (2005), provides for the filing of a map showing the lands which have been maintained and reciting that the road has vested in the County; and

WHEREAS, the action taken herein is authorized by law and serves a public purpose.

NOW THEREFORE, BE IT RESOLVED BY THE BOARD OF COUNTY COMMISSIONERS OF SEMINOLE COUNTY, FLORIDA, THAT:

- (1) The above recitals are hereby adopted as findings of fact and conclusions of law as if fully set forth in this operative part of this Resolution.
- (2) The Maintenance Map of Beardall Avenue dated December 13, 2005 is hereby confirmed , ratified and adopted as the official Maintenance Map for the portion of said Beardall Avenue depicted therein.
- (3) Said Maintenance Map shall be filed in the Office of the Clerk of Circuit Court of Seminole County.
- (4) The land within the right-of-way depicted in said map shall hereby vest in Seminole County.

ADOPTED THIS _____ DAY OF _____ A.D., 2006.

**BOARD OF COUNTY COMMISSIONERS
SEMINOLE COUNTY**

ATTEST:

Carlton Henley, Chairman

**MARYANNE MORSE, Clerk to the
Board of County Commissioners in
and for Seminole County, Florida.**